

Servicios Industriales
DEL PACIFICO

CATÁLOGO
2023



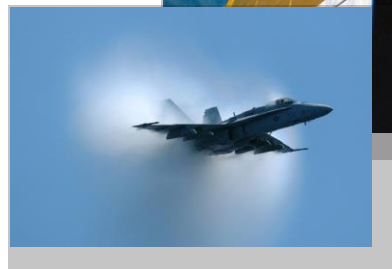


ENGINEERED TO BE
FEARLESS



Servicios Industriales
DEL PACIFICO

AEROSPACE INDUSTRY



SIGNATURE SERIES DRILLS



SDR4P36N2



SDR5P36N2



SDR6P26N3

Features:

- 0.4 hp, 0.5 hp, 0.6 hp & 1 hp
- 300 rpm - 23,000 rpm
- 1/4" – 1/2" Chuck Capacity
- Reversible Models
- Limited Rapid Reverse Models
- Keyless Chucks
- Trigger Start
- Rubber Grip
- Drop-In Motors – Ease of Service

Model Number	Chuck Capacity		Free Speed rpm	Weight		Length		Side To Center		Air Consumption		Spindle Thread
	in	mm		lb	kg	in	mm	in	mm	scfm	l/s	
0.4 hp (0.30 kW) – Keyed Chuck												
SDR4P22N2	1/4	6	2200	1.7	0.8	6.1	155	0.7	17	20	10	3/8"-24
SDR4P26N2	1/4	6	2600	1.6	0.7	5.5	140	0.7	17	20	10	3/8"-24
SDR4P26N3	3/8	10	2600	1.6	0.7	5.5	140	0.7	17	20	10	3/8"-24
SDR4P30N2	1/4	6	3000	1.6	0.7	5.5	140	0.7	17	20	10	3/8"-24
SDR4P36N2	1/4	6	3600	1.6	0.7	5.5	140	0.7	17	20	10	3/8"-24
SDR4P43N2	1/4	6	4300	1.6	0.7	5.5	140	0.7	17	20	10	3/8"-24
SDR4P50N2	1/4	6	5000	1.6	0.7	5.5	140	0.7	17	20	10	3/8"-24
SDR4P60N2	1/4	6	6000	1.6	0.7	5.5	140	0.7	17	20	10	3/8"-24
0.4 hp (0.30 kW) – Precision Key less Chuck												
SDR4P26NK2	1/4	6	2600	2.0	0.9	6.1	155	0.7	17	20	10	3/8"-24
SDR4P30NK2	1/4	6	3000	2.0	0.9	6.1	155	0.7	17	20	10	3/8"-24
0.5 hp (0.37 kW) – Keyed Chuck												
SDR5P26N2	1/4	6	2600	1.5	0.7	5.5	140	0.7	17	30	14	3/8"-24
SDR5P30N2	1/4	6	3000	1.5	0.7	5.5	140	0.7	17	30	14	3/8"-24
SDR5P36N2	1/4	6	3600	1.5	0.7	5.5	140	0.7	17	30	14	3/8"-24
SDR5P43N2	1/4	6	4300	1.5	0.7	5.5	140	0.7	17	30	14	3/8"-24
SDR5P50N2	1/4	6	5000	1.5	0.7	5.5	140	0.7	17	30	14	3/8"-24
0.60 hp (0.45 kW) – Keyed Chuck												
SDR6P26N2	1/4	6	2600	2.1	0.95	5.8	145	0.8	20	25	12	3/8"-24
SDR6P26N3	3/8	10	2600	2.3	1.00	6.3	160	0.8	20	25	12	3/8"-24
SDR6P26N4	1/2	13	2600	2.7	1.20	6.6	170	0.8	20	25	12	1/2"-20
SDR6P40N2	1/4	6	4000	2.1	0.95	5.8	145	0.8	20	25	12	3/8"-24
SDR6P40N3	3/8	10	4000	2.3	1.00	6.3	160	0.8	20	25	12	3/8"-24
SDR6P60N2	1/4	6	6000	2.1	0.95	5.8	145	0.8	20	25	12	3/8"-24
SDR6P60N3	3/8	10	6000	2.3	1.00	6.3	160	0.8	20	25	12	3/8"-24



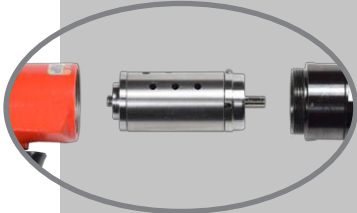
Air Inlet Size: 1/4" NPT • Recommended Hose Size: 3/8" (10 mm) • Performance rated @90 psig (6.2 bar) air pressure
Parts List • Safety and Instruction Manual • 3-jaw Chuck and Key • Comfort Grip

Please See Catalog For Full Listing

SIGNATURE SERIES DRILLS



Drop-in Motors Available



Model Number	Chuck Capacity		Free Speed	Weight		Length		Side To Center		Air Consumption		Spindle Thread
	in	mm	rpm	lb	kg	in	mm	in	mm	scfm	l/s	
0.60 hp (0.45 kW) – Precision Keyless Chuck												
SDR6P26NK3	3/8	10	2600	2.3	1.00	6.3	160	0.8	20	25	12	3/8"-24
SDR6P40NK3	3/8	10	4000	2.3	1.00	6.3	160	0.8	20	25	12	3/8"-24
SDR6P60NK3	3/8	10	6000	2.3	1.00	6.3	160	0.8	20	25	12	3/8"-24
1 hp (0.75 kW) – Keyed Chuck												
SDR10P26N2	1/4	6	2600	2.3	1.05	6.5	165	0.8	20	30	14	3/8"-24
SDR10P26N3	3/8	10	2600	2.5	1.10	7.0	180	0.8	20	30	14	3/8"-24
SDR10P26N4	1/2	13	2600	2.9	1.30	7.5	190	0.8	20	30	14	1/2"-20
SDR10P40N2	1/4	6	4000	2.3	1.05	6.5	165	0.8	20	30	14	3/8"-24
SDR10P40N3	3/8	10	4000	2.5	1.10	7.0	180	0.8	20	30	14	3/8"-24
SDR10P60N2	1/4	6	6000	2.3	1.05	6.5	165	0.8	20	30	14	3/8"-24
SDR10P60N3	3/8	10	6000	2.5	1.10	7.0	180	0.8	20	30	14	3/8"-24
1 hp (0.75 kW) – Precision Keyless Chuck												
SDR10P26NK3	3/8	10	2600	2.3	1.00	6.3	160	0.8	20	30	14	3/8"-24
SDR10P26NK4	1/2	13	2600	2.7	1.20	6.6	170	0.8	20	30	14	1/2"-20
SDR10P40NK3	3/8	10	4000	2.3	1.05	8.3	210	0.8	19	30	14	3/8"-24
SDR10P60NK3	3/8	10	6000	2.5	1.10	7.0	180	0.8	20	30	14	3/8"-24
1 hp (0.75 kW) – Keyless Chuck												
SDR10P26NL4	1/2	13	2600	2.7	1.20	6.7	171	0.8	20	30	14	1/2"-20

Air Inlet Size: 1/4" NPT • Recommended Hose Size: 3/8" (10 mm) • Performance rated @90 psig (6.2 bar) air pressure
 Parts List • Safety and Instruction Manual • 3-jaw Chuck and Key • Comfort Grip

Please See Catalog For Full Listing



CONTACTO@SIPACIFICO.COM.MX

MINIATURE ANGLE DRILLS



SDR4A33S8L



SDR4A35C8L



SDR4A13H8L



SDR4A28F8L



SDR4A29T8L



SDR4A8SF-SRK



Features:

- Non-Reversible
- Lever Start
- 45° or 90° Miniature Angle Heads

Model Number	Free Speed	Weight		Length		Side to Center		Air Consumption		Spindle Internal Thread
	rpm	lb	kg	in	mm	in	mm	scfm	l/s	
90° Standard Angle Head – 0.4 hp (0.30 kW)										
SDR4A8S8L	800	2.1	0.94	10.0	255	0.7	20	21	10	1/4"-28
SDR4A20S8L	2000	1.9	0.87	9.5	240	0.7	20	21	10	1/4"-28
SDR4A27S8L	2700	1.9	0.87	9.5	240	0.7	20	21	10	1/4"-28
SDR4A33S8L	3300	1.9	0.87	9.5	240	0.7	20	21	10	1/4"-28
SDR4A44S8L	4400	1.9	0.87	9.5	240	0.7	20	21	10	1/4"-28
SDR4A55S8L	5500	1.9	0.87	9.5	240	0.7	20	21	10	1/4"-28
SDR4A27S9L	2700	1.9	0.87	9.5	240	0.7	20	21	10	9/32"-40
90° Compact Angle Head – 0.4 hp (0.30 kW)										
SDR4A28C8L	2800	1.9	0.84	9.5	240	0.7	20	21	10	1/4"-28
SDR4A35C8L	3500	1.9	0.84	9.5	240	0.7	20	21	10	1/4"-28
SDR4A47C8L	4700	1.9	0.84	9.5	240	0.7	20	21	10	1/4"-28
SDR4A57C8L	5700	1.9	0.84	9.5	240	0.7	20	21	10	1/4"-28
90° Heavy Duty Angle Head – 0.4 hp (0.30 kW)										
SDR4A8H8L	800	2.2	0.99	10.3	260	0.7	20	21	10	1/4"-28
SDR4A13H8L	1300	2.2	0.99	10.3	260	0.7	20	21	10	1/4"-28
SDR4A21H8L	2100	2.0	0.92	9.8	250	0.7	20	21	10	1/4"-28
SDR4A28H8L	2800	2.0	0.92	9.8	250	0.7	20	21	10	1/4"-28
SDR4A35H8L	3500	2.0	0.92	9.8	250	0.7	20	21	10	1/4"-28
45° Angle Head – 0.4 hp (0.30 kW)										
SDR4A8F8L	800	2.0	0.92	10.3	260	0.7	20	21	10	1/4"-28
SDR4A21F8L	2100	1.9	0.85	9.8	250	0.7	20	21	10	1/4"-28
SDR4A28F8L	2800	1.9	0.85	9.8	250	0.7	20	21	10	1/4"-28
SDR4A35F8L	3500	1.9	0.85	9.8	250	0.7	20	21	10	1/4"-28
SDR4A47F8L	4700	1.9	0.85	9.8	250	0.7	20	21	10	1/4"-28
SDR4A57F8L	5700	1.9	0.85	9.8	250	0.7	20	21	10	1/4"-28
SDR4A28F9L	2800	1.9	0.85	9.8	250	0.7	20	21	10	9/32"-40
360° Swivel Head – 0.4 hp (0.30 kW)										
SDR4A18T8L	1800	2.1	0.97	10.0	265	0.7	20	21	10	1/4"-28
SDR4A29T8L	2900	2.1	0.97	10.0	265	0.7	20	21	10	1/4"-28
SDR4A48T8L	4800	2.1	0.97	10.0	265	0.7	20	21	10	1/4"-28
Sealant Removal Kit with 90° & 45° Head – 0.4 hp (0.30 kW)										
SDR4A8SF-SRK	800	2.1	0.94	10.0	255	0.7	20	21	10	1/4"-28
Sealant Removal Kit with 45° Head – 0.4 hp (0.30 kW)										
SDR4A8F-SRK	800	2.0	0.92	10.3	260	0.7	20	21	10	1/4"-28
Sealant Removal Kit with 90° Head – 0.4 hp (0.30 kW)										
SDR4A8S-SRK	800	2.1	0.94	10.0	255	0.7	20	21	10	1/4"-28

Air Inlet Size: 1/4" NPT • Recommended Hose Size: 3/8" (10 mm) • Performance rated @90 psig (6.2 bar) air pressure
Parts List • Safety and Instruction Manual

Please See Catalog For Additional Head Offerings & Dimensions

CONTACTO@SIPACIFICO.COM.MX

RIVET SHAVERS

Features:

- Pistol Grip & Inline



Model Number	Cutter Diameter		Free Speed rpm	Weight		Length		Side to Center		Air Consumption	
	in	mm		lb	kg	in	mm	in	mm	scfm	l/s
0.6 hp (0.45 kW) – Pistol Grip – 1/4"-28 Internal Thread											
SRS6P21-5	5/16	8	21000	2.0	0.9	6.5	165	0.8	21	25	12
SRS6P21-6	3/8	10	21000	2.0	0.9	6.5	165	0.8	21	25	12
SRS6P21-7	7/16	11	21000	2.0	0.9	6.5	165	0.8	21	25	12
SRS6P21-8	1/2	13	21000	2.0	0.9	6.5	165	0.8	21	25	12
SRS6P21-9	9/16	14	21000	2.0	0.9	6.5	165	0.8	21	25	12
SRS6P21-10	5/8	16	21000	2.0	0.9	6.5	165	0.8	21	25	12
SRS6P21-9W	9/16	14	21000	2.0	0.9	6.5	165	0.8	21	25	12
1 hp (0.75 kW) – Pistol Grip – 1/4"-28 Internal Thread											
SRS10P21-5	5/16	8	21000	2.7	1.2	8.0	205	0.9	23	25	12
SRS10P21-6	3/8	10	21000	2.7	1.2	8.0	205	0.9	23	25	12
SRS10P21-7	7/16	11	21000	2.7	1.2	8.0	205	0.9	23	25	12
SRS10P21-8	1/2	13	21000	2.7	1.2	8.0	205	0.9	23	25	12
SRS10P21-9	9/16	14	21000	2.7	1.2	8.0	205	0.9	23	25	12
SRS10P21-10	5/8	16	21000	2.7	1.2	8.0	205	0.9	23	25	12
1 hp (0.75 kW) – Inline – 1/4"-28 Internal Thread											
SRS10S21-8	1/2	13	21000	2.5	1.1	10.0	255	0.9	23	30	14

Air Inlet Size: 1/4" NPT • Recommended Hose Size: 3/8" (10 mm) • Performance rated @90 psig (6.2 bar) air pressure
Parts List • Safety and Instruction Manual • Skirt • Comfort Grip (Pistol Grip models) Stabilizer (SRS10P) • Cutters Not Included



SRS6P21-8



SRS10P21-8



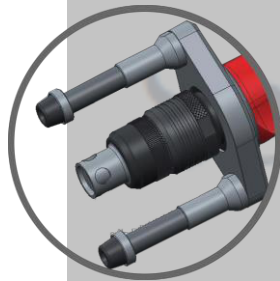
SRS10S21-8

RIVET SHAVER SKIRTS AND STABILIZER

Part Number	Cutter Diameter	
	in	mm
2925-5	5/16	8
2925-6	3/8	10
2925-7	7/16	11
2925-8B	1/2	13
2925-9	9/16	14
2925-9W	9/16	14
2925-10	5/8	16



2925-8B



74274A

Part Number	For Use On
74274A	SRS6P21 series



RIVET SHAVER KIT

- Includes:
- SRS6P21 Tool
 - 74274A Stabilizer
 - 5 Skirts:
 - 2925-5 5/16
 - 2925-6 3/8
 - 2925-7 7/16
 - 2925-8B 1/2
 - 2925-10 5/8

Model Number	Cutter Diameter		Free Speed rpm	Tool Weight		Tool Length		Side to Center		Maximum Air Consumption	
	in	mm		lb	kg	in	mm	in	mm	scfm	l/s
SRS6P21-K	3/8	10	21,000	2.0	0.9	6.5	165	0.8	21	25	12

SRS6P21-K



ROUTERS

SRT10S25N

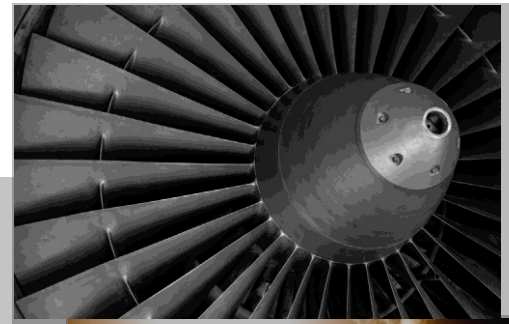


SRT10S25BB

SRT10S25B



SRT10S25LT



Features:

- Lockoff Lever Throttle
- Front Exhaust
- Interchangeable Base
- Built-in Speed Control



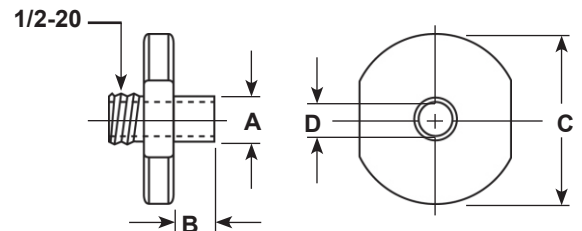
Model Number	Collet Size	Free Speed	Weight		Height		Air Consumption	
		rpm	lb	kg	in	mm	scfm	l/s
Template Nose*								
SRT10S18N	1/4	18000	2.1	0.95	9.0	230	30	14
SRT10S18M6N	6 mm	18000	2.1	0.95	9.0	230	30	14
SRT10S25N	1/4	25000	2.1	0.95	9.0	230	30	14
SRT10S25M6N	6 mm	25000	2.1	0.95	9.0	230	30	14
3" Base								
SRT10S18B	1/4	18000	2.1	0.95	9.0	230	30	14
SRT10S18M6B	6 mm	18000	2.1	0.95	9.0	230	30	14
SRT10S18BB	1/4	18000	2.6	1.15	8.3	210	30	14
SRT10S25B	1/4	25000	2.1	0.95	9.0	230	30	14
SRT10S25M6B	6 mm	25000	2.1	0.95	9.0	230	30	14
SRT10S25BB	1/4	25000	2.6	1.15	8.3	210	30	14
Laminate Trimmer								
SRT10S18LT	1/4	18000	2.9	1.30	9.3	235	30	14
SRT10S25LT	1/4	25000	2.9	1.30	9.3	235	30	14

*Template guides must be ordered separately, page 82

Air Inlet Size: 1/4" NPT • Recommended Hose Size: 3/8" (10 mm) • Performance rated @90 psig (6.2 bar) air pressure
Parts List • Safety and Instruction Manual • Base/Head Assembly, Collet, Collet Wrenches

Template Guide Chart

Part Number	Dimensions in Inches			
	A Pilot OD	B Pilot Length	C Flange OD	D Pilot ID
68613-12	3/8	1/4	3/4	9/32
68613-14	3/8	3/8	3/4	9/32
68613-16	3/8	1/2	3/4	9/32
68613-22	3/8	1/8	1-1/2	9/32
68613-24	3/8	1/4	1-1/2	9/32
68613-26	3/8	3/8	1-1/2	9/32
68613-40	7/16	1/4	3/4	21/64
68613-42	7/16	3/8	3/4	21/64
68613-44	7/16	1/2	1-1/2	21/64
68613-48	7/16	1/4	1-1/2	21/64
68613-50	7/16	3/8	1-1/2	21/64
68613-52	7/16	1/2	1-1/2	21/64
68613-62	1/2	1/4	1-1/2	11/32
68613-64	1/2	3/8	1-1/2	11/32
68613-66	1/2	1/2	1-1/2	11/32
68613-72	1/2	1/2	2-1/2	11/32
98613-76	1/2	1.0	3/4	5/16
98613-88	5/8	1.0	3/4	5/16



CONTACTO@SIPACIFICO.COM.MX

SKIN CLAMP RUNNERS



For up to 1/4"
Hex Body Fastener



SSR4P26



SSR6P25



2S2300SR



For up to 1/4"
Cylindrical Body Fastener

Features:

- Pistol Grip & Z-Handle
- Hex: 1/2" Internal; 9/16" External



Model Number	Fastener Type	Free Speed	Weight		Length		Side to Center		Air Consumption	
		rpm	lb	kg	in	mm	in	mm	scfm	l/s
0.24 hp (0.18 kW) – Pistol Grip										
SSR4P26	Cylindrical	2600	1.7	0.7	7.0	178	0.7	17	20	10
0.33 hp (0.25 kW) – Z-Handle										
2S2300SR	Hex	2200	2.6	1.2	5.7	145	0.9	23	16	8
0.40 hp (0.30 kW) – Pistol Grip										
SSR6P25	Hex	2500	2.7	1.2	9.2	234	0.9	23	30	14

Air Inlet Size: 1/4" NPT • Recommended Hose Size: 3/8" (10 mm) • Performance rated @90 psig (6.2 bar) air pressure
Parts List • Safety and Instruction Manual • Comfort Grip (Pistol Grip models)

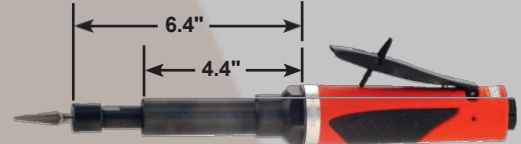
EXTENDED DIE GRINDERS

Features:

- Heavy duty double tapered collet
- Ergonomic comfort grip
- Teasing throttle for maximum control
- Lever throttle with lock-off
- Ball bearing construction
- Adjustable speed control



SXG05S23



STXG10S23



Model Number	Free Speed	Weight		Length		Air Consumption		Collet Size	Exhaust	
	rpm	lb	kg	in	mm	scfm	l/s			
0.5 hp (0.37 kW) – Lever Throttle – Extended – 200 Series Collet										
SXG05S18	18000	2.1	0.95	11.0	280	23	10.9	1/4"	Rear	
SXG05S18M6	18000	2.1	0.95	11.0	280	23	10.9	6 mm	Rear	
SXG05S23	23000	2.1	0.95	11.0	280	23	10.9	1/4"	Rear	
SXG05S23M6	23000	2.1	0.95	11.0	280	23	10.9	6 mm	Rear	
0.5 hp (0.37 kW) – Lever Throttle – Extended – 300 Series Collet										
SXG05S18S	18000	2.1	0.95	11.0	280	23	10.9	1/4"	Rear	
SXG05S18M6S	18000	2.1	0.95	11.0	280	23	10.9	6mm	Rear	
SXG05S23S	23000	2.1	0.95	11.0	280	23	10.9	1/4"	Rear	
SXG05S23M6S	23000	2.1	0.95	11.0	280	23	10.9	6mm	Rear	
1 hp (0.75 kW) – Lever Throttle – Extended – 200 Series Collet										
STXG10S12	12000	2.2	1.0	12.1	308	30	14	1/4"	Rear	
STXG10S12M6	12000	2.2	1.0	12.1	308	30	14	6 mm	Rear	
STXG10S18	18000	2.2	1.0	12.1	308	30	14	1/4"	Rear	
STXG10S18M6	18000	2.2	1.0	12.1	308	30	14	6 mm	Rear	
STXG10S23	23000	2.2	1.0	12.1	308	30	14	1/4"	Rear	
STXG10S23M6	23000	2.2	1.0	12.1	308	30	14	6 mm	Rear	
1 hp (0.75 kW) – Lever Throttle – Extended – Cone Wheel										
STXG10S18CW	18000	2.2	1.0	12.2	310	30	14	3/8"-24 EXT Thread	Rear	

Air Inlet Size: 1/4" NPT • Recommended Hose Size: 3/8" (10 mm) • Performance rated @90 psig (6.2 bar) air pressure
Parts List • Safety and Instruction Manual • Collet & Wrenches

RIGHT ANGLE DIE GRINDERS



Features:

- Lockoff Lever
- Built-in Speed Control



Model Number	Free Speed	Weight		Length		Air Consumption		Collet Size	Exhaust
	rpm	lb	kg	in	mm	scfm	l/s		
0.3 hp (0.22 kW) – Lever Throttle – 200 Series Collet									
SAG03S12	12000	1.4	0.6	5.6	140	11	5.2	1/4"	Rear
SAG03S12M6	12000	1.4	0.6	5.6	140	11	5.2	6 mm	Rear
SAG03S20	20000	1.4	0.6	5.6	140	11	5.2	1/4"	Rear
SAG03S20M6	20000	1.4	0.6	5.6	140	11	5.2	6 mm	Rear
0.3 hp (0.22 kW) – Lever Throttle – 300 Series Collet									
SAG03S12S	12000	1.35	0.45	5.6	143	11	5.2	1/4"	Rear
SAG03S12M6S	12000	1.35	0.45	5.6	143	11	5.2	6mm	Rear
SAG03S20S	20000	1.35	0.45	5.6	143	11	5.2	1/4"	Rear
SAG03S20M6S	20000	1.35	0.45	5.6	143	11	5.2	6mm	Rear
0.5 hp (0.37 kW) – Lever Throttle – 200 Series Collet									
SAG05S33	3300	2.2	1.0	8.2	208	23	11	1/4"	Rear
SAG05S54	5400	2.2	1.0	8.2	208	23	11	1/4"	Rear
SAG05S12	12000	1.7	0.77	6.9	175	23	11	1/4"	Rear
SAG05S12M6	12000	1.7	0.77	6.9	175	23	11	6 mm	Rear
SAG05S15	15000	1.7	0.77	6.9	175	23	11	1/4"	Rear
SAG05S15M6	15000	1.7	0.77	6.9	175	23	11	6mm	Rear
SAG05S18	18000	1.7	0.77	6.9	175	23	11	1/4"	Rear
SAG05S18M6	18000	1.7	0.77	6.9	175	23	11	6mm	Rear
SAG05S23	23000	1.6	0.64	6.4	160	23	10.8	1/4"	Rear
SAG05S23M6	23000	1.6	0.64	6.4	160	23	10.8	6 mm	Rear
0.5 hp (0.37 kW) – Lever Throttle – 300 Series Collet									
SAG05S12S	12000	1.65	0.77	6.9	175	23	11	1/4"	Rear
SAG05S12M6S	12000	1.65	0.77	6.9	175	23	11	6 mm	Rear
SAG05S15S	15000	1.65	0.77	6.9	175	23	11	1/4"	Rear
SAG05S15M6S	15000	1.65	0.77	6.9	175	23	11	6mm	Rear
SAG05S18S	18000	1.65	0.77	6.9	175	23	11	1/4"	Rear
SAG05S18M6S	18000	1.65	0.77	6.9	175	23	11	6mm	Rear
SAG05S23S	23000	1.55	0.61	6.4	162	23	10.8	1/4"	Rear
SAG05S23M6S	23000	1.55	0.61	6.4	162	23	10.8	6mm	Rear

Air Inlet Size: 1/4" NPT • Recommended Hose Size: 3/8" (10 mm) • Performance rated @90 psig (6.2 bar) air pressure
 Parts List • Safety and Instruction Manual • Collet & Wrenches

Please See Catalog For Full Listing

CONTACTO@SIPACIFICO.COM.MX

STRAIGHT DIE GRINDERS



SDG03S25



SDG7S25F



SDG05S23



SDG10S25F

Features:

- Lockoff Lever
- Front or Rear Exhaust
- Built-in Speed Control



Model Number	Free Speed		Weight		Length		Air Consumption		Collet Size	Exhaust
	rpm		lb	kg	in	mm	scfm	l/s		
0.3 hp (0.22 kW) – Lever Throttle – 200 Series Collet										
SDG03S25	25000		1.0	0.45	6.25	160	11	5.2	1/4"	Rear
SDG03S25M6	25000		1.0	0.45	6.25	160	11	5.2	6 mm	Rear
0.3 hp (0.22 kW) – Lever Throttle – 300 Series Collet										
SDG03S25S	25000		1.0	0.45	6.25	160	11	5.2	1/4"	Rear
SDG03S25M6S	25000		1.0	0.45	6.25	160	11	5.2	6mm	Rear
0.5 hp (0.37 kW) – Lever Throttle – 200 Series Collet										
SDG05S18	18000		1.2	0.54	7.0	180	23	10.9	1/4"	Rear
SDG05S18M6	18000		1.2	0.54	7.0	180	23	10.9	6 mm	Rear
SDG05S23	23000		1.2	0.54	7.0	180	23	10.9	1/4"	Rear
SDG05S23M6	23000		1.2	0.54	7.0	180	23	10.9	6 mm	Rear
0.5 hp (0.37 kW) – Lever Throttle – 300 Series Collet										
SDG05S18S	18000		1.2	0.54	7.0	180	23	10.9	1/4"	Rear
SDG05S18M6S	18000		1.2	0.54	7.0	180	23	10.9	6mm	Rear
SDG05S23S	23000		1.2	0.54	7.0	180	23	10.9	1/4"	Rear
SDG05S23M6S	23000		1.2	0.54	7.0	180	23	10.9	6mm	Rear

Air Inlet Size: 1/4" NPT • Recommended Hose Size: 3/8" (10 mm) • Performance rated @90 psig (6.2 bar) air pressure
 Parts List • Safety and Instruction Manual • Collet & Wrenches • Collet Guard (1DS series)

Please See Catalog For Full Listing

LOW SPEED RIGHT ANGLE SANDERS



SAG05S33

Features:

- 0.5 hp
- 1/4" Collet
- Robust Planetary Gears
- Drop-in Motor - Ease of Service

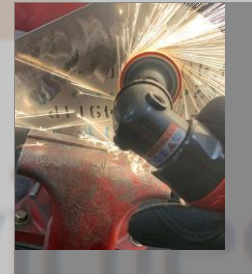


Model Number	Free Speed		Weight		Length		Air Consumption		Collet Size	Exhaust
	rpm		lb	kg	in	mm	scfm	l/s		
0.5 hp (0.37 kW) – Lever Throttle – 200 Series Collet										
SAG05S33	3300		2.2	1.0	8.2	208	23	11	1/4"	Rear
SAG05S54	5400		2.2	1.0	8.2	208	23	11	1/4"	Rear

General: Air Inlet Size: 1/4" NPT • Recommended Hose Size: 3/8" (10 mm) • Performance rated @90 psig (6.2 bar) air pressure

Low Spark Titanium Sanding Example

3300 RPM 12000 RPM



RIGHT ANGLE SANDER

Features:

- Lockoff Lever Throttle
- Rear Exhaust
- Comfort Grip



Model Number	Free Speed		Weight		Length		Air Consumption		Spindle Thread
	rpm		lb	kg	in	mm	scfm	l/s	
0.3 hp (0.22 kW) – 1/4"-20 Internal Thread									
SAS03S122-20	12000		1.1	0.5	5.6	143	11	5.2	1/4"-20



SAS03S122-20

Air Inlet Size: 1/4" NPT • Recommended Hose Size: 3/8" (10 mm) • Performance rated @90 psig (6.2 bar) air pressure
 Parts List • Safety and Instruction Manual • Support Handle (1 hp Models) • Spindle Wrenches • 1/4"-20 Threaded Arbor Backing Pad & Nut

CONTACTO@SIPACIFICO.COM.MX

RANDOM ORBITAL SANDERS



RO2512-50SNP



RO2512-50SRP



RO2512-50FVP

Features:

- 3/32" (3 mm), 3/16" (5 mm) & 3/8" (10 mm) Orbit Diameters
- Built-in Speed Control
- Ergonomic 24-Position Indexable Grip
- Non-Vacuum, Venturi Vacuum & Remote Vacuum

Model Number		Free Speed	Pad Size		Orbit Diameter		Weight		Height		Air Consumption	
PSA Pad	H & L Pad	rpm	in	mm	in	mm	lb	kg	in	mm	scfm	l/s
0.25 hp (0.19 kW) – 5/16"-24 Spindle Thread – Non-Vacuum												
RO2512-30FNP	RO2512-30FNH	12000	3.0	75	3/32	3	1.5	0.7	3.3	83	13	6
RO2512-30SNP	RO2512-30SNH	12000	3.0	75	3/16	5	1.5	0.7	3.3	83	13	6
RO2512-35FNP	RO2512-35FNH	12000	3.5	90	3/32	3	1.5	0.7	3.3	83	13	6
RO2512-35SNP	RO2512-35SNH	12000	3.5	90	3/16	5	1.5	0.7	3.3	83	13	6
RO2512-50FNP	RO2512-50FNH	12000	5.0	125	3/32	3	1.5	0.7	3.3	83	13	6
RO2512-50SNP	RO2512-50SNH	12000	5.0	125	3/16	5	1.5	0.7	3.3	83	13	6
RO2512-50CNP	RO2512-50CNH	12000	5.0	125	3/8	10	1.5	0.7	3.3	83	13	6
RO2512-60FNP	RO2512-60FNH	12000	6.0	150	3/32	3	1.5	0.7	3.3	83	13	6
RO2512-60SNP	RO2512-60SNH	12000	6.0	150	3/16	5	1.5	0.7	3.3	83	13	6
RO2512-60CNP	RO2512-60CNH	12000	6.0	150	3/8	10	1.5	0.7	3.3	83	13	6
0.25 hp (0.19 kW) – 5/16"-24 Spindle Thread – Remote Vacuum Ready												
RO2512-30FRP	RO2512-30FRH	12000	3.0	75	3/32	3	1.5	0.7	3.3	83	13	6
RO2512-30SRP	RO2512-30SRH	12000	3.0	75	3/16	5	1.5	0.7	3.3	83	13	6
RO2512-35FRP	RO2512-35FRH	12000	3.5	90	3/32	3	1.5	0.7	3.3	83	13	6
RO2512-35SRP	RO2512-35SRH	12000	3.5	90	3/16	5	1.5	0.7	3.3	83	13	6
RO2512-50FRP	RO2512-50FRH	12000	5.0	125	3/32	3	1.5	0.7	3.3	83	13	6
RO2512-50SRP	RO2512-50SRH	12000	5.0	125	3/16	5	1.5	0.7	3.3	83	13	6
RO2512-50CRP	RO2512-50CRH	12000	5.0	125	3/8	10	1.5	0.7	3.3	83	13	6
RO2512-60FRP	RO2512-60FRH	12000	6.0	150	3/32	3	1.5	0.7	3.3	83	13	6
RO2512-60SRP	RO2512-60SRH	12000	6.0	150	3/16	5	1.5	0.7	3.3	83	13	6
RO2512-60CRP	RO2512-60CRH	12000	6.0	150	3/8	10	1.5	0.7	3.3	83	13	6
0.25 hp (0.19 kW) – 5/16"-24 Spindle Thread – Self-contained Venturi Vacuum												
RO2512-30FVP	RO2512-30FVH	12000	3.0	75	3/32	3	1.5	0.7	3.3	83	13	6
RO2512-30SVP	RO2512-30SVH	12000	3.0	75	3/16	5	1.5	0.7	3.3	83	13	6
RO2512-35FVP	RO2512-35FVH	12000	3.5	90	3/32	3	1.5	0.7	3.3	83	13	6
RO2512-35SVP	RO2512-35SVH	12000	3.5	90	3/16	5	1.5	0.7	3.3	83	13	6
RO2512-50FVP	RO2512-50FVH	12000	5.0	125	3/32	3	1.5	0.7	3.3	83	13	6
RO2512-50SVP	RO2512-50SVH	12000	5.0	125	3/16	5	1.5	0.7	3.3	83	13	6
RO2512-50CVP	RO2512-50CVH	12000	5.0	125	3/8	10	1.5	0.7	3.3	83	13	6
RO2512-60FVP	RO2512-60FVH	12000	6.0	150	3/32	3	1.5	0.7	3.3	83	13	6
RO2512-60SVP	RO2512-60SVH	12000	6.0	150	3/16	5	1.5	0.7	3.3	83	13	6
RO2512-60CVP	RO2512-60CVH	12000	6.0	150	3/8	10	1.5	0.7	3.3	83	13	6

Air Inlet Size: 1/4" NPT • Recommended Hose Size: 3/8" (10 mm) • Performance rated @90 psig (6.2 bar) air pressure
 Parts List • Safety and Instruction Manual • Comfort Grip • Backing Pad & Wrench

CONTACTO@SIPACIFICO.COM.MX



ORBITAL JITTERBUG SANDER



RO2510-44FNC

Features:

- Built-in Speed Control
- Ergonomic 24-Position Indexable Grip



Model Number	Paper Size		Orbit Diameter		Weight		Height		Air Consumption	
	in	mm	in	mm	lb	kg	in	mm	scfm	l/s
0.25 hp (0.19 kW)										
RO2510-44FNC	3-3/4 x 4-1/4	95 x 105	3/32	3	1.8	0.8	3.5	90	13	6

Air Inlet Size: 1/4" NPT • Recommended Hose Size: 3/8" (10 mm) • Performance rated @90 psig (6.2 bar) air pressure
 Parts List • Safety and Instruction Manual

GEARED ORBITAL SANDERS



GO459-60SNP



GO459-80SRP

Features:

- 3/16" (5 mm) Orbit Diameter
- Built-in Speed Control
- Vacuum & Remote Vacuum
- Ergonomic 24-Position Indexable Grip



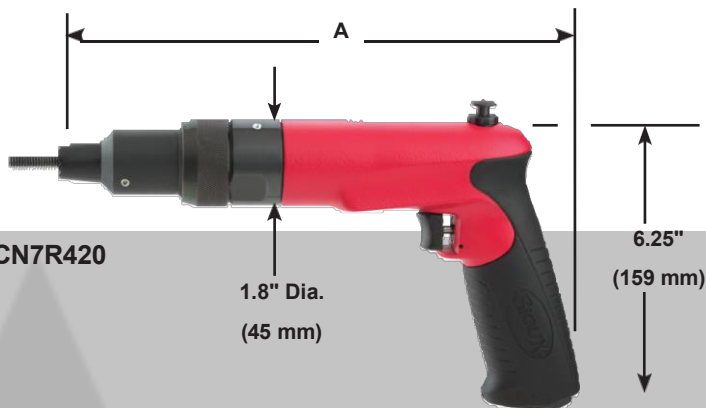
Model Number		Free Speed	Pad Size		Weight		Height		Air Consumption	
PSA Pad	H & L Pad	rpm	in	mm	lb	kg	in	mm	scfm	l/s
0.45 hp (0.34 kW) Non-Vacuum										
GO459-60SNP	GO459-60SNH	900	6.0	150	4.4	2.0	5.0	127	15	7
GO459-80SNP	GO459-80SNH	900	8.0	200	4.4	2.0	5.0	127	15	7
0.45 hp (0.34 kW) Remote Vacuum										
GO459-60SRP	GO459-60SRH	900	6.0	150	4.4	2.0	5.0	127	15	7
GO459-80SRP	GO459-80SRH	900	8.0	200	4.4	2.0	5.0	127	15	7

Air Inlet Size: 1/4" NPT • Recommended Hose Size: 3/8" (10 mm) • Performance rated @90 psig (6.2 bar) air pressure
 Parts List • Safety and Instruction Manual



CLINCH NUT TOOLS

For ordering complete tools select the appropriate power unit from the power unit table below, then select required thread size from Clinch Nut or Stud Head Unit tables. Combine part numbers for complete tool e.g. 700 rpm + 1/4-20 serrated nose = SCN7R420.



SCN7R420

Model Number	Free Speed	Maximum Torque		Weight		"A" Dimension		Side To Center		Air Consumption		
	rpm	in lb	Nm	lb	kg	in	mm	in	mm	scfm	l/s	
Pistol Grip – Rapid Reverse – Power Unit Only Specifications												
SCN3R	300	400	45.2	3.2	1.5	11	279	0.9	20	30	14	
SCN5R	500	325	36.7	3.2	1.5	11	279	0.9	20	30	14	
SCN7R	700	220	24.8	3.2	1.5	11	279	0.9	20	30	14	
SCN12R	1200	145	16.4	3.2	1.5	11	279	0.9	20	30	14	
SCN20R	2000	80	9.0	2.8	1.3	10	254	0.9	20	30	14	
SCN25R	2500	60	6.5	2.8	1.3	10	254	0.9	20	30	14	

Air Inlet Size: 1/4" NPT • Recommended Hose Size: 3/8" (10 mm) • Performance rated @90 psig (6.2 bar) air pressure
Parts List • Safety and Instruction Manual • Comfort Grip



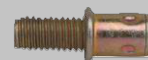
Front End Attachments

Clinch Nut



Thread Size	Order Number Suffix	
	Serrated Nose	Smooth Nose
#4-40	440	440S
M3 x 0.5	M305	M305S
#6-32	632	632S
#8-32	832	832S
M4 x 0.7	M407	M407S
#10-24	1024	1024S
#10-32	1032	1032S
M5 x 0.8	M508	M508S
1/4-20	420	420S
M6 x 1.0	M610	M610S
5/16-18	518	518S
M8 x 1.25	M8125	M8125S
3/8-16	616	616S
M10 x 1.5	M1015	M1015S

Clinch Stud



	Order Number Suffix	
	Serrated Nose	Smooth Nose
#4-40	440F	440SF
M3 x 0.5	M305F	M305SF
#6-32	632F	632SF
#8-32	832F	832SF
M4 x 0.7	M407F	M407SF
#10-24	1024F	1024SF
#10-32	1032F	1032SF
M5 x 0.8	M508F	M508SF
1/4-20	420F	420SF
M6 x 1.0	M610F	M610SF
5/16-18	518F	518SF
M8 x 1.25	M8125F	M8125SF
3/8-16	616F	616SF
M10 x 1.5	M1015F	M1015SF

HAMMERS



270A



270A-4

Features:

- Pistol Grip
- Teasing Throttle Trigger Start
- Accepts .401 Parker Taper Rivet
- Sets and Chisels

Model Number	Steel Rivet Capacity		Stroke Length		Bore Diameter		Blows per Minute	Weight		Length		Side To Center		Air Consumption	
	in	mm	in	mm	in	mm		lb	kg	in	mm	in	mm	scfm	l/s
270A-2	5/32	4.0	2.0	50	9/16	14.3	2500	3.0	1.4	5.8	147	1.1	28	8	4
270A	3/16	4.8	3.0	75	9/16	14.3	2000	3.2	1.5	6.8	173	1.1	28	8	4
270A-4	1/4	6.4	4.0	100	9/16	14.3	1700	3.5	1.6	7.8	198	1.1	28	8	4

Air Inlet Size: 1/4" NPT • Recommended Hose Size: 3/8" (10 mm) • Performance rated @90 psig (6.2 bar) air pressure
Parts List • Safety and Instruction Manual • Beehive Retainer

COMPRESSION RIVETERS

Features:

- Single, Tandem, and Triple Cylinder Options
- Riveting Capacity:
 - 1/8" (3 mm) (Single Cylinder)
 - 3/16" (5 mm) (Tandem Cylinder)
 - 1/4" (6 mm) (Triple Cylinder)
- Safety Throttle



SZEAE5030



SZEAE7030



SZEAE9030

Model Number	Rivet Set Shank Diameter		Cap Cold Rivet Diameter				Standard Alligator Yoke Dimension				Max Force at 90 psi		Moving Jaw				Net Weight w/ Yoke		Overall Length	
			Steel		Alum		Reach		Closed Ht				Max Travel		Stroke at Max Force					
	in	mm	in	mm	in	mm	in	mm	in	mm	in	mm	in	mm	in	mm	lb	kg	in	mm

CR-1 – Single Cylinder

SZEA5000	NA	NA	3/32	2	1/8	3	NA	NA	NA	NA	3000	13.4	5/8	16	final 1/16	2	2-1/4	1.0	7-11/16	195
SZEA5015	3/16	5	3/32	2	1/8	3	1-1/2	38	7/8	22	3000	13.4	5/8	16	final 1/16	2	3.75	1.7	9-3/16	233
SZEA5022	3/16	5	3/32	2	3/32	2	2-1/4	57	7/8	22	2200	9.8	7/8	22	final 3/32	2	4.25	1.9	10-1/8	257
SZEA5030	3/16	5	3/32	2	3/32	2	3	76	7/8	22	1800	8.0	1-1/4	32	final 1/8	3	4.75	2.2	10-7/8	276

CR-1 – Tandem Cylinder

SZEA7000	NA	NA	5/32	4	3/16	5	NA	NA	NA	NA	6000	26.7	5/8	16	final 1/16	2	4.0	1.8	10-1/2	267
SZEA7015	3/16	5	5/32	4	3/16	5	1-1/2	38	7/8	22	6000	26.7	5/8	16	final 1/16	2	5.5	2.5	12	305
SZEA7022	3/16	5	1/8	3	5/32	4	2-1/4	57	7/8	22	4300	19.1	7/8	22	final 3/32	2	6.0	2.7	13	330
SZEA7030	3/16	5	3/32	2	1/8	3	3	76	7/8	22	3400	15.1	1-1/4	32	final 1/8	3	6.25	2.8	13.75	349

CR-1 – Triple Cylinder

SZEA9000	NA	NA	3/16	5	1/4	6	NA	NA	NA	NA	9000	40.1	5/8	16	final 1/16	2	5.5	2.5	14.5	368
SZEA9015	3/16	5	3/16	5	1/4	6	1-1/2	38	7/8	22	9000	40.1	5/8	16	final 1/16	2	7.0	3.2	16	406
SZEA9022	3/16	5	5/32	4	3/16	5	2-1/4	57	7/8	22	7000	31.2	7/8	22	final 3/32	2	7.5	93.4	16.75	426
SZEA9030	3/16	5	5/32	4	3/16	5	3	76	7/8	22	5200	23.1	1-1/4	32	final 1/8	3	8.0	3.6	17.5	445

Air Inlet Size: 1/4" NPT • Recommended Hose Size: 3/8" (10 mm) • Performance rated @90 psig (6.2 bar) air pressure
 Parts List • Safety and Instruction Manual • Safety throttle action



SZEAE3015



SZEAE6015



SZEAE8015

Model Number	Rivet Set Shank Diameter		Cap Cold Rivet Diameter				Standard "C" Yoke Dimension				Closed Height		Max Travel		Max Force at 90 psi		Stroke at Max Force		Net Weight w/ Yoke		Overall Length	
			Steel		Alum		Reach		Gap													
	in	mm	in	mm	in	mm	in	mm	in	mm	in	mm	in	mm	lb	kN	in	mm	lb	kg	in	mm

CR-1 – Single Cylinder

SZEA3000	N/A	N/A	3/32	2	1/8	3	N/A	N/A	N/A	N/A	N/A	N/A	9/16	14	3000	13.4	f-1/16	2	3-1/2	1.6	8-1/2	216
SZEA3015	3/16	5	3/32	2	1/8	3	1-1/2	38	1-1/4	32	11/16	78	9/16	14	3000	13.4	f-1/16	2	4-1/2	2	10-1/4	262

CR-1 – Tandem Cylinder

SZEA6000	N/A	N/A	5/32	4	3/16	5	N/A	N/A	N/A	N/A	N/A	N/A	9/16	14	6000	26.7	f-1/16	2	4-1/2	2	11-1/4	287
SZEA6015	3/16	5	5/32	4	3/16	5	1-1/2	38	1-1/4	32	11/16	78	9/16	14	6000	26.7	f-1/16	2	5-1/2	2.5	14	356

CR-1 – Triple Cylinder

SZEA8000	N/A	N/A	5/32	4	1/4	6	N/A	N/A	N/A	N/A	N/A	N/A	9/16	14	9000	40.1	f-1/16	2	7-1/2	3.4	16	406
SZEA8015	3/16	5	3/16	5	1/4	6	1-1/2	38	1-1/4	32	11/16	78	9/16	14	9000	40.1	f-1/16	2	8-1/2	3.9	18-3/4	476

Due to a variety of jobs and applications, Squeeze Riveters are not supplied with rivet sets.

Please contact Sioux Tools, Inc. or your local distributor for rivet set information.

Air Inlet Size: 1/4" NPT • Recommended Hose Size: 3/8" (10 mm) • Performance rated @90 psig (6.2 bar) air pressure

Parts List • Safety and Instruction Manual • Safety throttle action

CONTACTO@SIPACIFICO.COM.MX
VENTAS@SIPACIFICO.COM.MX



#sipacificoindustrial



Servicios Industriales DEL PACIFICO

ALIADO ESTRATEGICO DE LA INDUSTRIA

Teléfono +52 (664) 975 · 6337

Correo contacto@sipacifico.com.mx

Dirección
Ciruelo s/n, Col. Granja Santa Cecilia C.P. 21386
Mexicali Baja California