



Servicios Industriales
DEL PACIFICO

CATÁLOGO
2023



GREENLEE®
Professional. Nothing Less.™



GreenleeGator® tools combine industry-leading technology and ergonomic designs to help you work smarter on the jobsite. With features including i-press® diagnostics and Intelli-CRIMP® technology such as, Automatic Retraction Stop (ARS), you can always be sure the job is done right.



IMPROVE SAFETY

Updated tool design provides a lightweight ergonomic solution for confined work areas



MAXIMIZE POWERSUPPLY

High capacity Makita® battery platform provides active battery monitoring



BE MORE PRODUCTIVE

Save time on the jobsite with innovative features such as Automatic Retraction Stop (ARS)



TRI-INSULATION BARRIER

Provides three (3) layers of protection (Patent Pending)



WORK SMARTER

Bluetooth® networked tools interface to diagnose any tool to keep optimal overview of tool performance



EFFECTIVE OCTOBER 1, 2019

GreenleeTools, Inc. warrants to the original purchaser of these goods for use, that these products will be free from defects in workmanship and material for a period of **SEVEN** years excepting normal wear and abuse. See page 50 for more information.



GATOR® EVOLUTION



1995

Introduction of the first battery powered crimping tools



2000

Introduction of ECCX Multi-Tool



2002

Introduction of In-Line Mini

2010

Introduction of Intelli-Crimp® & Li-Ion battery platform



2016

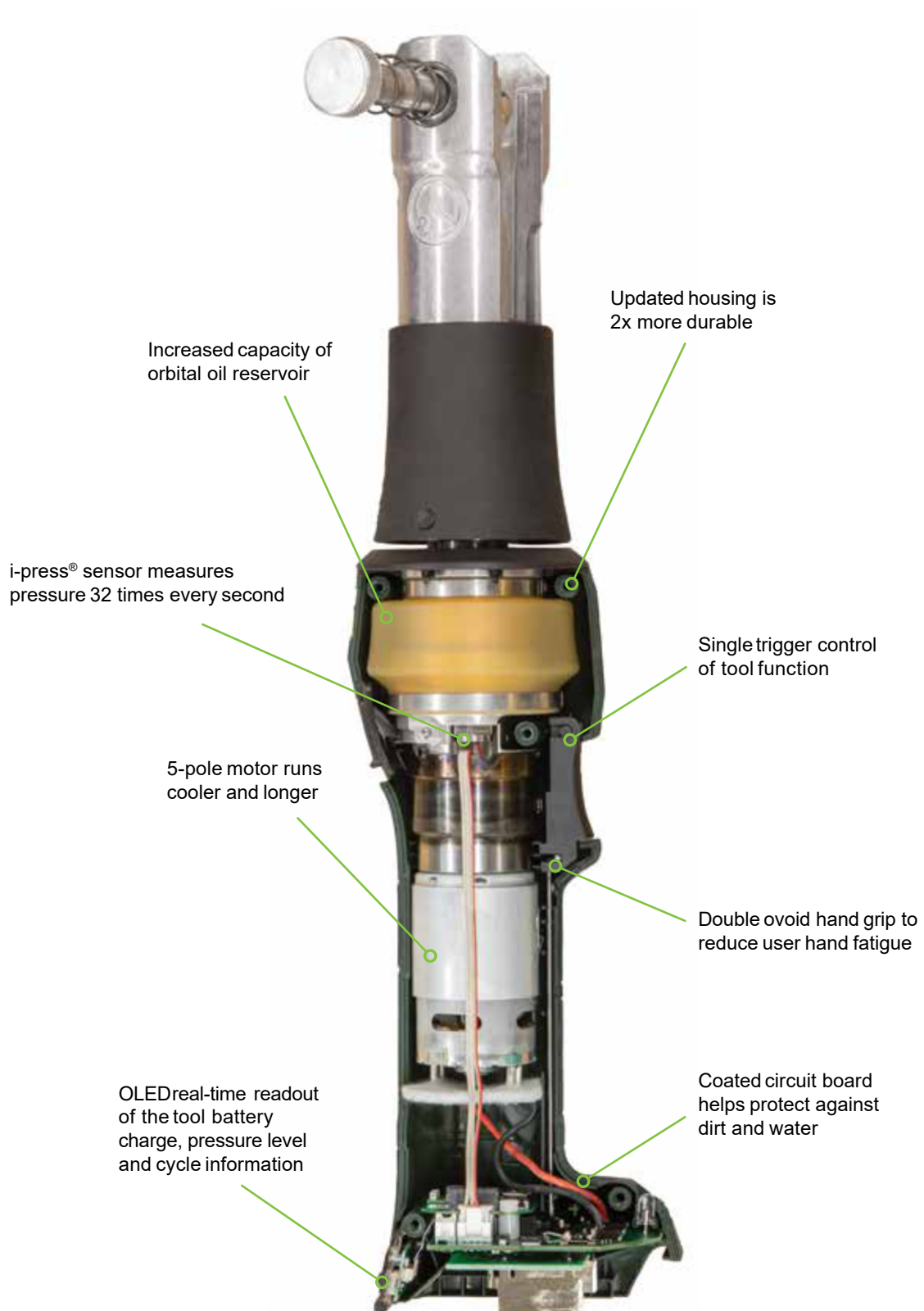
Introduction of Gator Next Generation Product Line

2019

Introduction of Greenlee Gator Insulated Series battery-powered hydraulic cutting and crimping tools



THE NEW DESIGN STANDARD



INDUSTRY'S FIRST IN-HOUSE ERGONOMICS TESTING LAB

ErgoLab®

THIRD PARTY TEST RESULTS

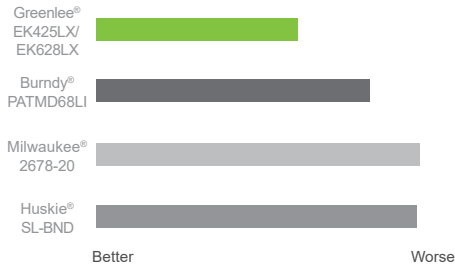
Greenlee's in-house ErgoLab has partnered with Iowa State University's ATHENA lab, a premier engineering and scientific leader in ergonomic testing, to compare our battery tools against the competition.

SURVEY SPOTLIGHT

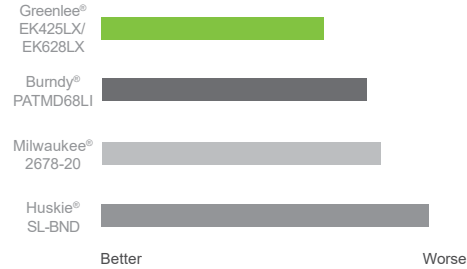
Participants rated the tools in 8 performance categories on a 10-point scale after using the tools, with 1 being best and 10 being worst. The Greenlee EK425LX/EK628LX was rated the best 6-ton crimper overall in all eight performance categories. A highlight of the surveyed categories include:



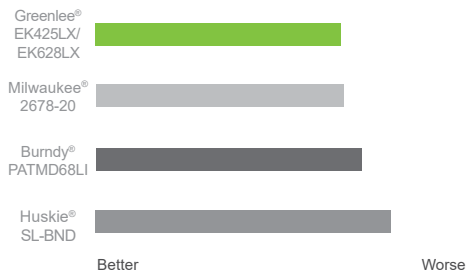
Weight



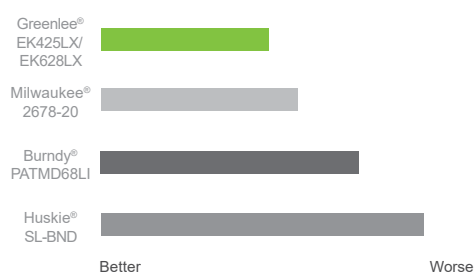
Speed/ Efficiency



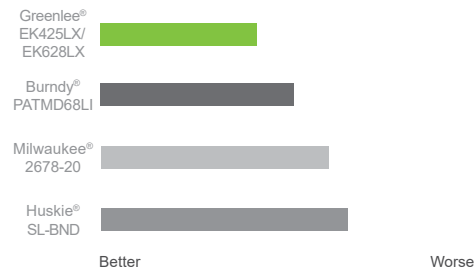
Hand Size Fit / Comfort



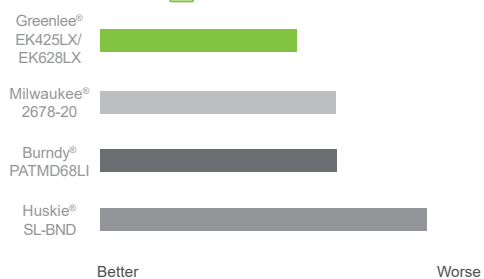
Trigger Design



Force/ Effort

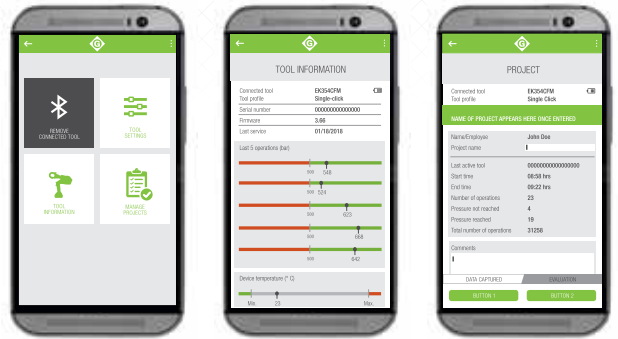


Overall



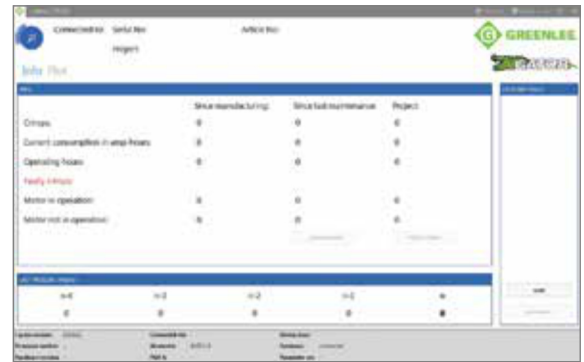
i-press® APP

- Personalize your tool settings
- Review tool performance data
- Choose individual user profiles
- Create and send work history PDF's
- Available for your smart phone or tablet on iOS and Android platforms



i-press® DESKTOP SOFTWARE

- Software designed to make connecting your mobile device simple
- Bluetooth® enabled on compatible PCs
- Set service intervals and download work history reports
- Add user and inventory information to your Gator® tools
- Review wave forms in AMP and PSI
- The i-press desktop software is compatible with all Gator tools manufactured from 1994-present. L-model tools will need to use the PGA-1 diagnostic tool, X-model tools can use either the PGA-1 or remotely connect via Bluetooth®



Download is free and available at Greenlee.com



WORK SMARTER

Monitors Pressure

Intelli-CRIMP® technology measures pressure and amperage 32 times every second

Polices the Crimp

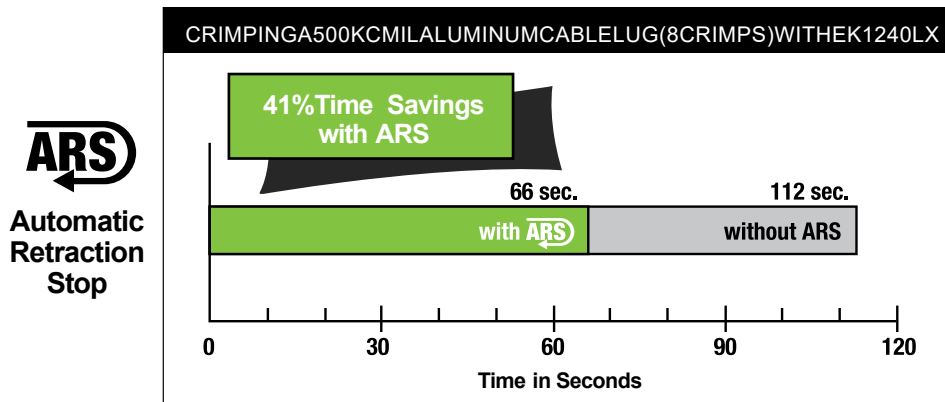
Alerts operator visually and audibly if crimp force is not achieved

Retracts Automatically

Tool signals user that crimp is complete by retracting ram automatically

Saves Time

Smart tool minimizes the retraction distance after each cycle utilizing Automatic Retraction Stop (ARS) which retracts the ram just enough to get ready for the next cycle, saving time and energy. Additionally, the Retraction Stop Repeat (RSR) feature allows the operator to partially retract the ram repeating the retraction for subsequent crimps.



After a cut or crimp, **Automatic Retraction Stop (ARS)** prevents full retraction of the ram, saving time when making multiple crimps compared to crimping without ARS.

Understanding what the Tool is Saying

Red Bi-LED	Work LED	Audio	Description
20 sec			Glowing for 20 seconds after crimp, battery discharged
2 x			Self check after battery insertion
20 sec/2Hz			Flashing for 20 seconds at 2Hz after crimp = return for service
20 sec/5Hz			Flashing for 20 seconds at 5Hz during high temperature = unit too hot
20 seconds glowing and 20 seconds flashing intermittently after crimp = service required and battery flat			
1 x	1 x		Error: the necessary oil pressure was not reached, or there is a manual retraction with the motor not running
3 x	3 x		Error: the necessary oil pressure with the motor running was not achieved



INNOVATION

The new Greenlee Gator® Insulated Series battery-powered hydraulic cutting and crimping tools feature a patent-pending design to help protect operators from electrical shock up to 1000V.

This Tri-Insulation Barrier impedes voltage from discharging between the head and tool body. Each tool undergoes dielectric testing as part of our production process to assure voltage protection up to 1000V.

SAFER OPERATION

When working on or near live circuits in low-voltage areas, the use of insulated manual hand tools are often required. In tight or enclosed workspaces, exerting the force necessary to operate insulated manual hand tools can be challenging and dangerous.

The new battery powered Gator Insulated Series of cutting and crimping tools can help reduce the operator's field of movement and exertion, which can improve precision and safety in these hazardous and confined work conditions. Applications include installation of cable joints, working on overhead service lines, meters and street lighting.

KEY GATOR INSULATED SERIES FEATURES



TRI-INSULATION BARRIER

Provides three (3) layers of protection (Patent Pending)



BRUSH-GUARDED HEAD

Helps avoid accidental contact with conductors



360° ROTATING HEAD

For improved agility in confined work spaces



BLUETOOTH® COMMUNICATION

Connects with Greenleei-press® App



INSULATED CUTTING TOOLS

ES20HVX, ESC32HVX, ESC25HVX

NEW



ES20HVX



ES20HVX – IN-LINE ACSR CUTTER

CAT NO.	UPC NO.	DESCRIPTION
ES20HVX11	783310040491	20 mm Cutter, (PVC) 120V Charger, Two 4.0Ah Batteries
ES20HVX12	783310040507	20 mm Cutter, (PVC) 12V Charger, Two 4.0Ah Batteries
ES20HVX22	783310040514	20 mm Cutter, (PVC) 230V Charger, Two 4.0Ah Batteries
ES20HVXB	783310040521	20 mm Cutter, (PVC) Bare Tool Only



ES32HVX

ES32HVX – IN-LINE CABLE CUTTER

CAT NO.	UPC NO.	DESCRIPTION
ES32HVX11	783310038085	32 mm Cutter, (PVC) 120V Charger, Two 4.0Ah Batteries
ES32HVX12	783310038092	32 mm Cutter, (PVC) 12V Charger, Two 4.0Ah Batteries
ES32HVX22	783310038108	32 mm Cutter, (PVC) 230V Charger, Two 4.0Ah Batteries
ES32HVXB	783310038115	32 mm Cutter, (PVC) Bare Tool Only

COPPER/ALUMINIUM CUTTER



ESC25HVX



ESC25HVX – IN-LINE ACSR CUTTER

CAT NO.	UPC NO.	DESCRIPTION
ESC25HVX11	783310040538	25 mm Cutter, (PVC) 120V Charger, Two 4.0Ah Batteries
ESC25HVX12	783310040545	25 mm Cutter, (PVC) 12V Charger, Two 4.0Ah Batteries
ESC25HVX22	783310040552	25 mm Cutter, (PVC) 230V Charger, Two 4.0Ah Batteries
ESC25HVXB	783310040569	25 mm Cutter, (PVC) Bare Tool Only



For capacity, see chart on page 46.



INSULATED CUTTING TOOLS

ESC35HVX, ESC50HVX

NEW



ESC35HVX

ESC35HVX – IN-LINE CABLE CUTTER

CAT NO.	UPC NO.	DESCRIPTION
ESC35HVX11	783310038122	35 mm Cutter, (PVC)120V Charger, Two 4.0Ah Batteries
ESC35HVX12	783310038139	35 mm Cutter, (PVC)12V Charger, Two 4.0Ah Batteries
ESC35HVX22	783310038146	35 mm Cutter, (PVC)230V Charger, Two 4.0Ah Batteries
ESC35HVXB	783310038153	35 mm Cutter, (PVC)Bare Tool Only

COPPER/ALUMINIUM CUTTER



ESC50HVX

ESC50HVX – IN-LINE CABLE CUTTER

CAT NO.	UPC NO.	DESCRIPTION
ESC50HVX11	783310038160	50 mm Cutter, (PVC)120V Charger, Two 4.0Ah Batteries
ESC50HVX12	783310038177	50 mm Cutter, (PVC)12V Charger, Two 4.0Ah Batteries
ESC50HVX22	783310038184	50 mm Cutter, (PVC)230V Charger, Two 4.0Ah Batteries
ESC50HVXB	783310038191	50 mm Cutter, (PVC)Bare Tool Only

COPPER/ALUMINIUM CUTTER



For capacity, see chart on page 46.

INSULATED CRIMPING TOOLS

EK425VX, EK628VX

NEW



EK425VX

EK425VHX – 6-TON IN-LINE CRIMPER

CAT NO.	UPC NO.	DESCRIPTION
EK425VXDO11	783310041283	6-Ton Crimper, CJD30Jaw, 120V Charger, Two 4.0Ah Batteries
EK425VXDO12	783310041290	6-Ton Crimper, CJD30Jaw, 12V Charger, Two 4.0Ah Batteries
EK425VXDO22	783310041306	6-Ton Crimper, CJD30Jaw, 230V Charger, Two 4.0Ah Batteries
EK425VXDOB	783310041313	6-Ton Crimper, CJD30Jaw, Bare Tool Only
EK425VXDBG11	783310041993	6-Ton Crimper, CJD3BG Jaw, 120V Charger, Two 4.0Ah Batteries
EK425VXDBG12	783310042006	6-Ton Crimper, CJD3BG Jaw, 12V Charger, Two 4.0Ah Batteries
EK425VXDBG22	783310042013	6-Ton Crimper, CJD3BG Jaw, 230V Charger, Two 4.0Ah Batteries
EK425VXDBGB	783310042020	6-Ton Crimper, CJD3BG Jaw, Bare Tool Only
EK425VXK11	783310042037	6-Ton Crimper, CJK Jaw, 120V Charger, Two 4.0Ah Batteries
EK425VXK12	783310042044	6-Ton Crimper, CJK Jaw, 12V Charger, Two 4.0Ah Batteries
EK425VXK22	783310042105	6-Ton Crimper, CJK Jaw, 230V Charger, Two 4.0Ah Batteries
EK425VXKB	783310042112	6-Ton Crimper, CJK Jaw, Bare Tool Only
EK425VXD11	783310042129	6-Ton Crimper, CJD3 Jaw, 120V Charger, Two 4.0Ah Batteries
EK425VXD12	783310042136	6-Ton Crimper, CJD3 Jaw, 12V Charger, Two 4.0Ah Batteries
EK425VXD22	783310042143	6-Ton Crimper, CJD3 Jaw, 230V Charger, Two 4.0Ah Batteries
EK425VXDB	783310042150	6-Ton Crimper, CJD3 Jaw, Bare Tool Only

NOTE: Connections are UL and cUL classified for copper and aluminum, when used with Greenlee tools on Anderson®, Blackburn®, Burndy®, ILSCO®, Panduit®, Thomas & Betts® and Penn-Union® Color-Coded Lugs and Splices.



EK628VX

EK628VX – 6-TON IN-LINE CRIMPER

CAT NO.	UPC NO.	DESCRIPTION
EK628VX11	783310042549	6-Ton Crimper, CJ22 Jaw, 120V Charger, Two 4.0Ah Batteries
EK628VX12	783310042556	6-Ton Crimper, CJ22 Jaw, 12V Charger, Two 4.0Ah Batteries
EK628VX22	783310042600	6-Ton Crimper, CJ22 Jaw, 230V Charger, Two 4.0Ah Batteries
EK628VXB	783310042617	6-Ton Crimper, CJ22 Jaw, Bare Tool Only

NOTE: Connections are UL and cUL classified for copper and aluminum, when used with Greenlee tools on Anderson®, Blackburn®, Burndy®, ILSCO®, Panduit®, Thomas & Betts® and Penn-Union® Color-Coded Lugs and Splices.



For capacity, see chart on page 46.



INSULATED CRIMPING TOOLS

EK622CVX, EK6IDCVX

NEW



EK622CVX

EK622CVX – 6-TON IN-LINE CRIMPER

CAT NO.	UPC NO.	DESCRIPTION
EK622CVX11	783310041030	6-Ton Crimper, 622 Jaw, 120V Charger, Two 4.0Ah Batteries
EK622CVX12	783310041047	6-Ton Crimper, 622 Jaw, 12V Charger, Two 4.0Ah Batteries
EK622CVX22	783310041054	6-Ton Crimper, 622 Jaw, 230V Charger, Two 4.0Ah Batteries
EK622CVXB	783310041061	6-Ton Crimper, 622 Jaw, Bare Tool Only

NOTE: Connections are UL and cUL classified for copper and aluminum, when used with Greenlee tools on Anderson®, Blackburn®, Burndy®, ILSCO®, Panduit®, Thomas & Betts® and Penn-Union® Color-Coded Lugs and Splices.



EK6IDCVX

EK6IDCVX – 6-TON IN-LINE INDENTER

CAT NO.	UPC NO.	DESCRIPTION
EK6IDCVX11	783310042624	6-Ton Crimper, (PVC)6ID Jaw, 120V Charger, Two 4.0Ah Batteries
EK6IDCVX12	783310042648	6-Ton Crimper, (PVC)6ID Jaw, 120V Charger, Two 4.0Ah Batteries
EK6IDCVX22	783310042655	6-Ton Crimper, (PVC)6ID Jaw, 120V Charger, Two 4.0Ah Batteries
EK6IDCVXB	783310042662	6-Ton Crimper, (PVC)6ID Jaw, Bare Tool Only

NOTE: Connections are UL and cUL classified for copper and aluminum, when used with Greenlee tools on Anderson®, Blackburn®, Burndy®, ILSCO®, Panduit®, Thomas & Betts® and Penn-Union® Color-Coded Lugs and Splices.

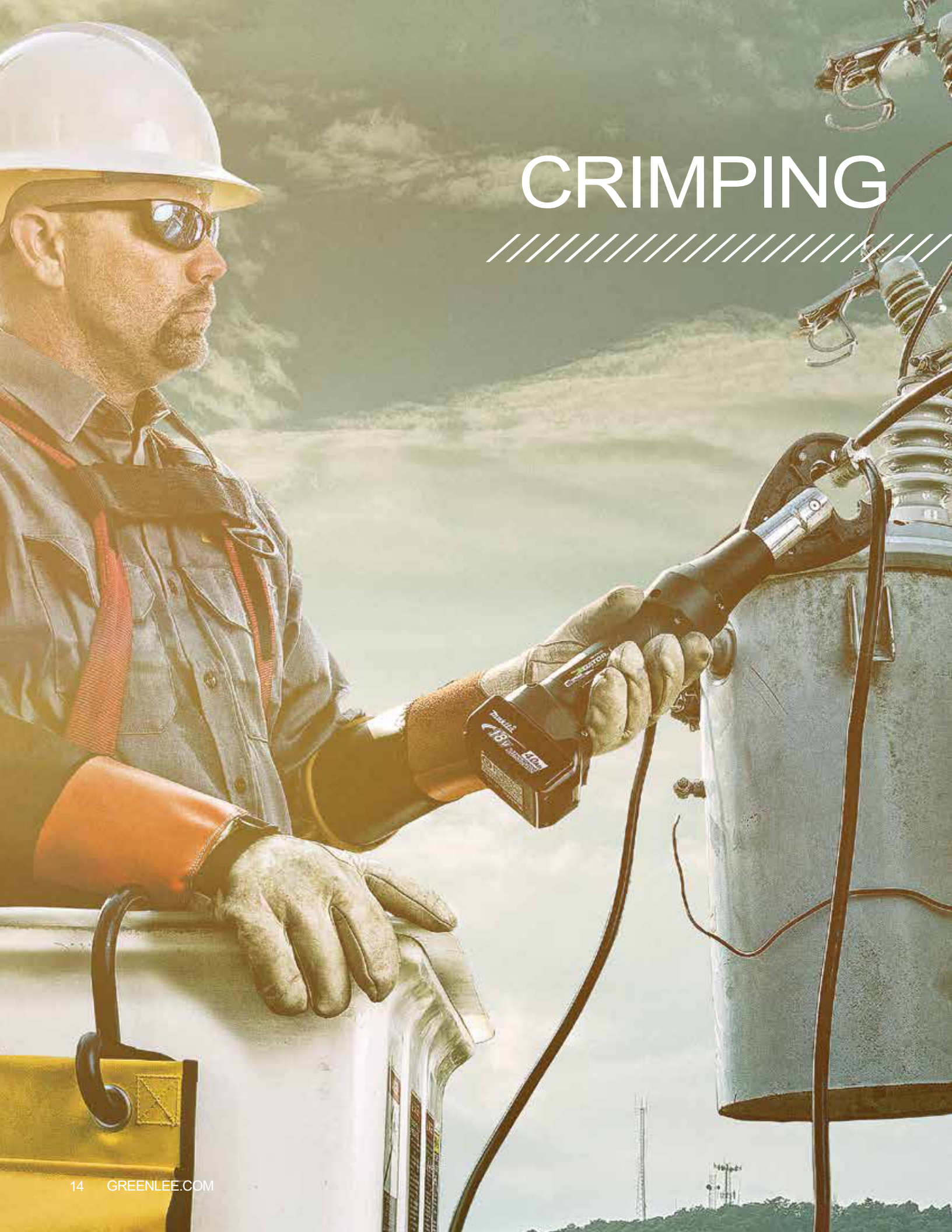


1000V

For capacity, see chart on page 46.



CRIMPING



6-TON IN-LINE EK425LX



EK425LX

- Intelli-CRIMP® technology notifies operator with a visual and audible alert in real time if crimp force is not achieved
- One trigger controls all tool functions
- Crimping head rotates 350°
- Patented spring pin jaw engagement
- LED work light illuminates dark work areas
- LED display with real time PSI reading
- Bluetooth® enabled

SPECIFICATIONS

Crimping Force	6-Ton (54kN)
Length	14-3/4" (375 mm) without head or battery
Width	4" (108 mm)
Weight	6.6 lb (3 kg)
Battery	18V 4.0Ah Li-ion

CAPACITY

5/8" Service Entrance Connectors	10-1/0 AWG
.840 Service Entrance Connectors	1/0-4/0 AWG
Aluminum "H" Taps	6-4/0 AWG
Copper "H" Taps	10-2 AWG
Copper Tension Splices	6-2/0 AWG
Aluminum Tension Splices	6-4/0 AWG
One Piece ACSRTension Splices	4-1/0 AWG
Two Piece ACSRTension Splices	2 AWG to 477 kcmil
Aluminum Jumper Splices	4 AWG to 266.8 kcmil
Stirrups	2-4/0 AWG
Aluminum Color-Coded Lugs and Splices	8-4/0 AWG



ACCESSORIES

CAT NO.	UPC NO.	DESCRIPTION
05167	783310051671	18V 4.0Ah Li-ion Battery
52178	783310521785	120V Li-ion Battery Charger
52179	783310521792	230V Li-ion Battery Charger
52180	783310521808	12V Li-ion Battery Charger
12274	783310122746	Carrying Strap
CP1	783310030782	Tool Pouch

EK425LX

CAT NO.	UPC NO.	DESCRIPTION
EK425LXDO11	783310609056	6-Ton Crimper, CJD30 Jaw, 120V Charger, Two 4.0Ah Batteries
EK425LXDO12	783310609063	6-Ton Crimper, CJD30 Jaw, 12V Charger, Two 4.0Ah Batteries
EK425LXDO22	783310609070	6-Ton Crimper, CJD30 Jaw, 230V Charger, Two 4.0Ah Batteries
EK425LXDOB	783310609087	6-Ton Crimper, CJD30 Jaw, Bare Tool Only
EK425LXDBG11	783310609094	6-Ton Crimper, CJD3BG Jaw, 120V Charger, Two 4.0Ah Batteries
EK425LXDBG12	783310609100	6-Ton Crimper, CJD3BG Jaw, 12V Charger, Two 4.0Ah Batteries
EK425LXDBG22	783310609117	6-Ton Crimper, CJD3BG Jaw, 230V Charger, Two 4.0Ah Batteries
EK425LXDBGB	783310609124	6-Ton Crimper, CJD3BG Jaw, Bare Tool Only
EK425LXK11	783310609131	6-Ton Crimper, CJK Jaw, 120V Charger, Two 4.0Ah Batteries
EK425LXK12	783310609148	6-Ton Crimper, CJK Jaw, 12V Charger, Two 4.0Ah Batteries
EK425LXK22	783310609155	6-Ton Crimper, CJK Jaw, 230V Charger, Two 4.0Ah Batteries
EK425LXKB	783310609162	6-Ton Crimper, CJK Jaw, Bare Tool Only
EK425LXD11	783310609179	6-Ton Crimper, CJD3 Jaw, 120V Charger, Two 4.0Ah Batteries
EK425LXD12	783310609186	6-Ton Crimper, CJD3 Jaw, 12V Charger, Two 4.0Ah Batteries
EK425LXD22	783310609193	6-Ton Crimper, CJD3 Jaw, 230V Charger, Two 4.0Ah Batteries
EK425LXDB	783310609209	6-Ton Crimper, CJD3 Jaw, Bare Tool Only

***NOTE:** Connections are UL and cUL classified for copper and aluminum when used with Anderson®, Blackburn®, ILSCO®, Panduit®, Thomas & Betts® and Penn-Union® Color-Coded Lugs and Splices.

CJD Series Jaws Accept KD6 dies (Page 22) or Industry Standard "W" Style Dies.
CJK Jaws Accept Kearney® "O", Thomas & Betts® 6-Ton, or Blackburn® "OD" Dies.

6-TON IN-LINE EK628LX



EK628LX

- Intelli-CRIMP® technology notifies operator with a visual and audible alert in real time if crimp force is not achieved
- One trigger controls all tool functions
- Crimping head rotates 350°
- Patented spring pin jaw engagement
- LED work light illuminates dark work areas
- LED display with real time PSI reading
- Bluetooth® enabled
- EK628LX used with Greenlee 22 series dies – See page 22

SPECIFICATIONS

Crimping Force	6-Ton (54kN)
Length	14-3/4" (375 mm) without head or battery
Width	4" (108 mm)
Weight	6.6 lb (3 kg)
Battery	18V 2.0Ah Li-ion (EK628)

CAPACITY

Cooper color-coded connectors	8 AWG to 600 kcmil
Aluminum color-coded connectors	8 AWG to 350 kcmil

EK628LX

CAT NO.	UPC NO.	DESCRIPTION
EK628LX11	783310609391	6-Ton Crimper, CJ22 Jaw, 120V Charger, Two 2.0Ah Batteries
EK628LX12	783310609407	6-Ton Crimper, CJ22 Jaw, 12V Charger, Two 2.0Ah Batteries
EK628LX22	783310609414	6-Ton Crimper, CJ22 Jaw, 230V Charger, Two 2.0Ah Batteries
EK628LXB	783310609445	6-Ton Crimper, CJ22 Jaw, Bare Tool Only



INTERCHANGEABLE JAWS FOR EK425 AND EK628

CRIMPING JAWS



CJD30 CJD3BG CJD3 CJK CJXPJ

CUTTING JAWS



CJB CJ-CUAL CJ-ACSR1

JAWS

CAT NO.	UPC NO.	DESCRIPTION
CJ-CUAL	783310082231	Dual Cutter Jaw Assembly
CJ-ASCR1	783310082248	ASCR Cutter Jaw Assembly
CJD3	783310032427	Crimping Jaw with single D die groove
CJD3BG	783310845157	Crimping Jaw Unit – D and BG die grooves
CJD3O	783310845140	Crimping Jaw Unit – D and Odie grooves
CJK	783310048299	Crimping Jaw Unit for Kearney "O" dies
CJB	783310845133	Cutting Jaw for one-time disposable lock hasps
CJXPJ	783310845126	Crimping Jaw with Nicopress X, P, & J die grooves

***NOTE:** Connections are UL and cUL classified for copper and aluminum when used with Anderson®, Blackburn®, ILSCO®, Panduit®, Thomas & Betts® and Penn-Union® Color-Coded Lugs and Splices.

6-TON IN-LINE EK622LX



EK622LX

- Intelli-CRIMP® technology notifies operator with a visual and audible alert in real time if crimp force is not achieved
- One trigger controls all tool functions
- Crimping head rotates 350°
- Used with Greenlee® KC22 and KA22 series crimping dies
- Includes 04292 die adapters which can be used with all industry "W" style crimping dies and Greenlee KD6 style dies

SPECIFICATIONS

Crimping Force	12,000 lb (53kN)
Length	15-3/4" (80 mm)
Width	2-7/8" (413 mm)
Battery	18V 2.0Ah Li-Ion
Capacity	Copper Color-Coded Lugs and Splices, 600 kcmil (MCM) Aluminum Color-Coded Lugs and Splices, 350 kcmil (MCM)

For capacity with other types of dies, see chart on page 22

EK622LX

CAT NO.	UPC NO.	DESCRIPTION
EK622LX11	783310609513	6-Ton Crimper, 120V Charger, Two 2.0Ah Batteries
EK622LX12	783310609520	6-Ton Crimper, 12V Charger, Two 2.0Ah Batteries
EK622LX22	783310609537	6-Ton Crimper, 230V Charger, Two 2.0Ah Batteries
EK622LXB	783310609568	6-Ton Crimper, Bare Tool Only

ACCESSORIES

CAT NO.	UPC NO.	DESCRIPTION
52177	783310521778	18V 2.0Ah Li-ion Battery
05167	783310051671	18V 4.0Ah Li-ion Battery
52178	783310521785	120V Li-ion Battery Charger
52179	783310521792	230V Li-ion Battery Charger
52180	783310521808	12V Li-ion Battery Charger
12274	783310122746	Carrying Strap
04292	783310042921	Die Adapter for "W" Type Dies



Crimping Dies for 6-Ton Tools

Crimping dies on page 22

12-TON PISTOL

EK1240LX, EK1240CLX,
EK1250KLX



EK1240LX



EK1240CLX



EK1240KLX

- Intelli-CRIMP® technology notifies operator with a visual and audible alert in real time if crimp force is not achieved
- Automatic Retraction Stop (ARS) retracts the ram just enough to get ready for the next cycle saving time and energy
- One trigger controls all tool functions
- Crimping head rotates 350°
- EK1240L with 1.65" (42 mm) opening uses Greenlee KC12, KA12 & KD12 crimping dies plus all industry "U" style crimping dies, EK1240KL uses Kearney PH2 style crimping dies
- Covered head models have two layers of PVC that total approximately 3/16" (4.8 mm) thick

SPECIFICATIONS

Crimping Force	12 Tons (106 kN)
Length	16-1/4" (80 mm)
Width	3-1/8" (413 mm)
Height	13-1/2" (343 mm)
Weight	15 lb (6.8 kg)
Capacity	8 AWG– 750 kcmil Cu & Al lugs and splices

EK1240LX

CAT NO.	UPC NO.	DESCRIPTION
EK1240LX11	783310609834	12-Ton 42 mm Crimper, 120V Charger, Two 4.0Ah Batteries
EK1240LX12	783310609841	12-Ton 42 mm Crimper, 12V Charger, Two 4.0Ah Batteries
EK1240LX22	783310609858	12-Ton 42 mm Crimper, 230V Charger, Two 4.0Ah Batteries
EK1240LXB	783310609889	12-Ton 42 mm Crimper, Bare Tool Only

EK1240CLX – PVC BRUSH GUARD

CAT NO.	UPC NO.	DESCRIPTION
EK1240CLX11	783310610342	12-Ton 42 mm Crimper, 120V Charger, Two 4.0 Ah Batteries
EK1240CLX12	783310610359	12-Ton 42 mm Crimper, 12V Charger, Two 4.0 Ah Batteries
EK1240CLX22	783310610366	12-Ton 42 mm Crimper, 230V Charger, Two 4.0 Ah Batteries
EK1240CLXB	783310610397	12-Ton 42 mm Crimper, Bare Tool Only

EK1240KLX – PVC BRUSH GUARD

CAT NO.	UPC NO.	DESCRIPTION
EK1240KLX11	783310610465	12-Ton 30 mm Crimper, 120V Charger, Two 4.0 Ah Batteries
EK1240KLX12	783310610472	12-Ton 30 mm Crimper, 12V Charger, Two 4.0 Ah Batteries
EK1240KLX22	783310610489	12-Ton 30 mm Crimper, 230V Charger, Two 4.0 Ah Batteries
EK1240KLXB	783310610519	12-Ton 30 mm Crimper, Bare Tool Only

ACCESSORIES

CAT NO.	UPC NO.	DESCRIPTION
05167	783310051671	18V 4.0Ah Li-ion Battery
52178	783310521785	120V Li-ion Battery Charger
52179	783310521792	230V Li-ion Battery Charger
52180	783310521808	12V Li-ion Battery Charger
12274	783310122746	Carrying Strap



**Crimping Dies for
12-Ton Tools**

Crimping dies on page 23

15-TON PISTOL

EK1550FLX, EK1550LX



EK1550FLX

UA15T

- Intelli-CRIMP® technology notifies operator with a visual and audible alert in real time if crimp force is not achieved
- Automatic Retraction Stop (ARS) retracts the ram just enough to get ready for the next cycle, saving time and energy
- Accepts P-style die to crimp splices and lugs up to 1500 kcmil copper and 1250 kcmil aluminum
- Accepts Kearney PH4/P14 dies without adapter
- Crimping head rotates 350°
- Includes UA15T U Die Adapter

SPECIFICATIONS

Crimping Force	15 Tons (135 kN)
Length	18-1/2" (470 mm)
Width	3-1/8" (80 mm)
Height	13-1/2" (343 mm)
Weight	16.3 lb (7.4 kg)
Capacity	8 AWG–1550 kcmil Cu lugs and splices 8 AWG–1250 kcmil Al lugs and splices



EK1550LX

EK1550LX – KEARNEY STYLE

CAT NO.	UPC NO.	DESCRIPTION
EK1550LX11	783310610700	15-Ton Crimper, 120V Charger, Two 4.0 Ah Batteries
EK1550LX12	783310610717	15-Ton Crimper, 12V Charger, Two 4.0 Ah Batteries
EK1550LX22	783310610724	15-Ton Crimper, 230V Charger, Two 4.0 Ah Batteries
EK1550LXB	783310609759	Crimper, 15T Li-ion, STD, Bare Tool Only

EK1550FLX – KEARNEY STYLE

CAT NO.	UPC NO.	DESCRIPTION
EK1550FLX11	783310610588	15-Ton Crimper, 120V Charger, Two 4.0 Ah Batteries
EK1550FLX12	783310610595	15-Ton Crimper, 12V Charger, Two 4.0 Ah Batteries
EK1550FLX22	783310610601	15-Ton Crimper, 230V Charger, Two 4.0 Ah Batteries
EK1550FLXB	783310610632	Crimper Flip T, 15T Li-ion, STD, Bare Tool Only

ACCESSORIES

CAT NO.	UPC NO.	DESCRIPTION
05167	783310051671	18V 4.0Ah Li-ion Battery
52178	783310521785	120V Li-ion Battery Charger
52179	783310521792	230V Li-ion Battery Charger
52180	783310521808	12V Li-ion Battery Charger
12274	783310122746	Carrying Strap
HE.10310	783310234920	Handle
UA15T	783310002604	Die Adapters – Greenlee® “U” style dies, Burndy® “U” style dies, ILSCO® ILD style dies, Thomas & Betts® 15500 style dies, Blackburn® 15500 style dies
48820	783310488200	Die Adapters – Burndy® P dies (Y46), ILSCO® ILD-P dies
48788	783310487883	Die Adapters – Thomas & Betts® 15600 dies, Blackburn® 15600 dies
48802	783310488026	Die Adapters – Greenlee® 12-Ton dies, Burndy® 12-Ton dies, ILSCO® ILD dies, Thomas & Betts® 15500 dies, Blackburn® 15500 dies
48824	783310488248	Die Adapters – Kearney PH2/WH2



4-TON IN-LINE EK410LX



EK410LX

- Intelli-CRIMP® technology notifies operator with a visual and audible alert in real time if crimp force is not achieved
- In-line tool style is lightweight and very easy to control
- Crimping head rotates 350°
- Used with Greenlee® KC4, KA4 and KD4 crimping dies – See page 21

SPECIFICATIONS

Crimping Force	7,900 lb (35 kN)
Length	13-1/4" (337 mm)
Width	2-7/8" (73 mm)
Weight	4 lb (1.8 kg)
Battery	18V 2.0Ah Li-ion
Capacity	8 AWG to 300 kcmil copper color-coded connectors 8 AWG to 2/0 AWG kcmil aluminum color-coded connectors 5/8" service entrance connectors 840 service entrance connectors

EK410LX

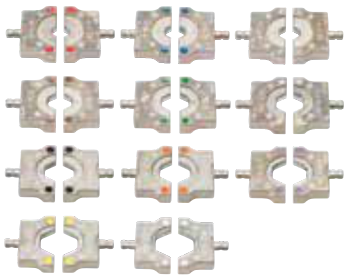
CAT NO.	UPC NO.	DESCRIPTION
EK410LX11	783310609278	4-Ton Crimper, 120V Charger, Two 2.0 Ah Batteries
EK410LX12	783310609285	4-Ton Crimper, 12V Charger, Two 2.0 Ah Batteries
EK410LX22	783310609292	4-Ton Crimper, 230V Charger, Two 2.0 Ah Batteries
EK410LXB	783310609322	4-Ton Crimper, Bare Tool Only

ACCESSORIES

CAT NO.	UPC NO.	DESCRIPTION
05167	783310051671	18V 4.0Ah Li-ion Battery
52177	783310521778	18V 2.0Ah Li-ion Battery
52178	783310521785	120V Li-ion Battery Charger
52179	783310521792	230V Li-ion Battery Charger
52180	783310521808	12V Li-ion Battery Charger
12274	783310122746	Carrying Strap



4-TON IN-LINE CRIMPING DIES



For Use With:



EK410LX
page 20

DIES FOR CRIMPING COLOR-CODED COPPER & ALUMINUM LUGS & SPLICES

CABLE SIZE	ALUMINUM		COPPER	
	CAT NO.	COLOR	CAT NO.	COLOR
8 AWG	KA4-8	BLUE	KC4-8	RED
6 AWG	KA4-6	GRAY	KC4-6	BLUE
4 AWG	KA4-4	GREEN	KC4-4	GRAY
2 AWG	KA4-2	PINK	KC4-2	BROWN
1 AWG	KA4-1	GOLD	KC4-1	GREEN
1/0 AWG	KA4-1/0	TAN	KC4-1/0	PINK
2/0 AWG	KA4-2/0	OLIVE	KC4-2/0	BLACK
3/0 AWG	–	–	KC4-3/0	ORANGE
4/0 AWG	–	–	KC4-4/0	PURPLE
250 KCMIL (MCM)	–	–	KC4-250	YELLOW
300 KCMIL (MCM)	–	–	KC4-300	WHITE

***NOTE:** Connections are UL and cUL classified for copper and aluminum when used with Anderson®, Blackburn®, ILSCO®, Panduit®, Thomas & Betts® and Penn-Union® Color-Coded Lugs and Splices.

KC4 DIES FOR SERVICE ENTRANCE CONNECTORS

CAT NO.	UPC NO.	DESCRIPTION
KD4-10	783310020219	Crimping Dies for 5/8" Service Entrance Connectors
KD4-840	783310020226	Crimping Dies for 840 Service Entrance Connectors

4-TON CRIMPING DIE KIT*

CAT NO.	UPC NO.	DESCRIPTION
KC4CU	783310020370	Complete Die Set for copper connectors. Includes dies for 8 AWG to 300 kcmil (MCM) copper connectors. (Dies can be stored in tool carrying case.)
KA4AL	783310122371	Complete die set for aluminum connectors. Includes dies for 8 AWG through 2/0 AWG. (Dies can be stored in tool carrying case.)

6-TON CRIMPING DIE COMPATIBILITY



Crimping Dies for 6-Ton Tools

- All dies on this page for use with battery tool models: ECCXLX, EK628LX, EK622LX

SPECIFICATIONS —22 SERIES CRIMPING DIES

Cable Size	Aluminum		Copper	
	Catalog No.	Color	Catalog No.	Color
8 AWG	KA22-8	Blue	KC22-8	Red
6 AWG	KA22-6	Gray	KC22-6	Blue
4 AWG	KA22-4	Green	KC22-4	Gray
2 AWG	KA22-2	Pink	KC22-2	Brown
1 AWG	KA22-1	Gold	KC22-1	Green
1/0 AWG	KA22-1/0	Tan	KC22-1/0	Pink
2/0 AWG	KA22-2/0	Olive	KC22-2/0	Black
3/0 AWG	KA22-3/0	Ruby	KC22-3/0	Orange
4/0 AWG	KA22-4/0	White	KC22-4/0	Purple
250 KCMIL (MCM)	KA22-250	Red	KC22-250	Yellow
300 KCMIL (MCM)	KA22-300	Blue	KC22-300	White
350 KCMIL (MCM)	KA22-350	Brown	KC22-350	Red
400 KCMIL (MCM)	—	—	KC22-400	Blue
500 KCMIL (MCM)	—	—	KC22-500	Brown
600 KCMIL (MCM)	—	—	KC22-600	Green

NOTE: Dies for Crimping Color-Coded Copper & Aluminum Lugs & Splices* (Require UA22 adapter when used with ECCXL, HCCX, & RCCX tools)

FOR USE WITH:



EK622LX
page 16



EK628LX
page 15

"W"-STYLE DIES

Catalog No.	Burndy No.	Catalog No.	Burndy No.
KD6-10	W-BG	KD6-18	W-166
KD6-11	W-O	KD6-19	W-243
KD6-12	W-C	KD6-20	W-247
KD6-13	W-K840	KD6-21	W-249
KD6-14	W-161	KD6-22	W-164
KD6-15	W-162	KD6-24	W-237
KD6-16	W-163	KD6-25	W-239
KD6-17	W-165	KD6-27	W-28K

NOTE: Dies for use with service entrance connectors, c-taps, h-taps, overhead and underground connectors (Require UAW adapter when used with ECCXL tools, Requires CJD3, CJD3BG, or CJD30 jaws when used with EK628L tools)

FOR USE WITH:



EK425LX
page 14



***NOTE:** Connections are UL and cUL classified for copper and aluminum, when used with Greenlee tools on Anderson®, Blackburn®, Burndy®, ILSCO®, Panduit®, Thomas & Betts® and Penn-Union® Color-Coded Lugs and Splices.

CAT. NO.	UPC NO.	DESCRIPTION
K22S1GL	783310030782	Die Kit for 8 AWG to 600 kcmil Copper Connectors – Includes all copper die sets listed below and carrying case
KD06AL	783310016311	Die Kit for 8 AWG to 350 kcmil Aluminum Connectors – Includes all aluminum die sets listed below and carrying case

12-TON CRIMPING DIE COMPATIBILITY

Crimping Dies for 12-Ton Tools

- All dies on this page for use with models: EK1230L, EK1240L, HK1230, HK1240, RK1240, HKL1232, and E12CCXtools, and RK1550 equipped with 48802 die adapter



SPECIFICATIONS —“U” STYLE DIES

Cable Size	Aluminum		Copper	
	Catalog No.	Color	Catalog No.	Color
8 AWG	KA12-8	Blue	KC12-8	Gray
6 AWG	KA12-6	Gray	KC12-6	Blue
4 AWG	KA12-4	Green	KC12-4	Gray
2 AWG	KA12-2	Pink	KC12-2	Brown
1 AWG	KA12-1	Gold	KC12-1	Green
1/0 AWG	KA12-1/0	Tan	KC12-1/0	Pink
2/0 AWG	KA12-2/0	Olive	KC12-2/0	Black
3/0 AWG	KA12-3/0	Ruby	KC12-3/0	Orange
4/0 AWG	KA12-4/0	White	KC12-4/0	Purple
250 KCMIL (MCM)	KA12-250	Red	KC12-250	Yellow
300 KCMIL (MCM)	KA12-300	Blue	KC12-300	White
350 KCMIL (MCM)	KA12-350	Brown	KC12-350	Red
400 KCMIL (MCM)	KA12-400	Green	KC12-400	Blue
500 KCMIL (MCM)	KA12-500	Pink	KC12-500	Brown
600 KCMIL (MCM)	KA12-600	Black	KC12-600	Green
750 KCMIL (MCM)	KA12-750	Yellow	KC12-750	Black

FOR USE WITH:



EK1240LX
page 18



RK1240
page 32



EK1550FLX
page 18
UA15T adapter needed
with U-Style dies

*Connections are UL and cUL classified for copper and aluminum connectors when used with Greenlee tools on Anderson®, Blackburn®, FCI Burndy®, ILSCO®, Panduit®, Thomas & Betts® and Penn-Union® color-coded lugs and splices.

NOTE: Dies for Crimping Color-Coded Copper & Aluminum Lugs & Splices

ADDITIONAL “U” STYLE DIES

Catalog No.	Burndy No.	Catalog No.	Burndy No.	Catalog No.	Burndy No.
KD12-10	U-BG	KD12-19	U-243	KD12-36	U-654
KD12-11	U-O	KD12-20	U-247	KD12-37	U-655
KD12-12	U-C	KD12-21	U-249	KD12-38	U-658
KD12-14	U-161	KD12-30	U-D3	KD12-39	U-659
KD12-15	U-162	KD12-32	U-F	KD12-40	U-998
KD12-17	U-165	KD12-33	U-997	—	—
KD12-18	U-166	KD12-35	U-238		

CAT. NO.	UPC NO.	DESCRIPTION
KD12CU	783310102601	Die Kit for 6 AWG to 750 kcmil Copper Connectors – Includes all copper die sets below except KC12-8
KD12AL	783310102618	Die Kit for 6 AWG to 750 kcmil Aluminum Connectors – Includes all aluminum die sets below except 35776

6- AND 12-TON CCX MULTI-TOOLS E12CCXLX, E6CCXLX

- Retraction Stop Repeat (RSR) allows the operator to partially retract the ram and then the tool repeats the retraction for subsequent crimps
- Use optional CCX blades and adapters (see page 25)



E12CCXLX



Crimping Dies for 12-Ton Tools

Crimping dies on page 23



E6CCXLX



Crimping Dies for 6-Ton Tools

Crimping dies on page 22

SPECIFICATIONS

Crimping Force	E12CCXLX– 24,000 lb (107kN) 12-Ton; E6CCXLX– 12,000 lb (53 kN) 6-Ton
Length	E12CCXLX– 16-1/2" (419 mm); E6CCXLX– 15-1/2" (394 mm)
Weight	E12CCXLX– 15 lb (6.8 kg); E6CCXLX– 14 lb (6.3 kg)
Battery	E12CCXLX– 18V 4.0Ah Li-ion; E6CCXLX– 18V 4.0Ah Li-ion

EC12CCXLX

CAT NO.	UPC NO.	DESCRIPTION
E12CCXLX11	783310611462	12-Ton, Multi-Tool, 120V Charger, Two 4.0 Ah Batteries
E12CCXLX12	783310611479	12-Ton, Multi-Tool, 12V Charger, Two 4.0 Ah Batteries
E12CCXLX22	783310611486	12-Ton, Multi-Tool, 230V Charger, Two 4.0 Ah Batteries
E12CCXLXB	783310611516	12-Ton, Multi-Tool, Bare Tool Only

E6CCXLX

CAT NO.	UPC NO.	DESCRIPTION
E6CCXLX11	783310611585	6-Ton, Multi-Tool, 120V Charger, Two 4.0 Ah Batteries
E6CCXLX12	783310611592	6-Ton, Multi-Tool, 12V Charger, Two 4.0 Ah Batteries
E6CCXLX22	783310611608	6-Ton, Multi-Tool, 230V Charger, Two 4.0 Ah Batteries
E6CCXLXB	783310611639	6-Ton, Multi-Tool, Bare Tool Only

ACCESSORIES

CAT NO.	UPC NO.	DESCRIPTION
05167	783310051671	18V 4.0Ah Li-ion Battery
52178	783310521785	120V Li-ion Battery Charger
52179	783310521792	230V Li-ion Battery Charger
52180	783310521808	12V Li-ion Battery Charger
12274	783310122746	Carrying Strap



CCX TOOL ACCESSORIES

(OPTIONAL, ALL IN PAIRS EXCEPT PUNCH DRIVER)



UA22



UAK



UC40



UCUNC38



UA12P



UA12ID

DIE ADAPTERS

CAT NO.	UPC NO.	DESCRIPTION	E6CCXLX	E12CCXLX
UA22	783310070627	Adapter for Greenlee® K22 dies	X	–
UAK	783310070337	Adapter for Kearney "0", Thomas & Betts® "6-Ton", and Blackburn® "OD" dies	X	–
UAW	783310070351	Adapter for Burndy® "W" and Panduit® "CD-2001" dies (equivalent to "D3" die)	X	–
UA12T	783310201588	Adapter for "U" dies (included with E12CCXLtool)	–	–

CABLE CUTTING BLADES

CAT NO.	UPC NO.	DESCRIPTION	E6CCXLX	E12CCXLX
UC26	783310067146	Cutter blades AL & CU 1" capacity	X	X
UC40	783310070368	Cutter blades AL & CU 1-1/2" capacity	X	X
UCACSR	783310070375	Cutter blades for ACSR & guy strand	X	X

THREADED ROD CUTTING BLADES

CAT NO.	UPC NO.	DESCRIPTION	E6CCXLX	E12CCXLX
UCUNC14	783310070382	Cutter blades for 1/4" threaded rod	X	X
UCUNC38	783310070399	Cutter blades for 3/8" threaded rod	X	X
UCUNC12	783310072744	Cutter blades for 1/2" threaded rod	X	X

KNOCKOUT PUNCH ADAPTER

CAT NO.	UPC NO.	DESCRIPTION	E6CCXLX	E12CCXLX
UA12P	783310118909	Punch Driver Adapter (accepts 3/4" draw stud)	X	X

DIELESS CRIMP ADAPTER

CAT NO.	UPC NO.	DESCRIPTION	E6CCXLX	E12CCXLX
UA12ID	783310008033	Dieless Crimp Adapter	–	X

DIELESS



6-TON IN-LINE INDENTER EK6IDLX, EK6IDCLX

NEW



EK6IDLX



EK6IDCLX

- Two-stage telescopic ram design identifies correct pressure to apply
- Single trigger operation for controlling all tool functions
- PVCcoated head for brush protection

SPECIFICATIONS

Crimping Force	Variable 6-Ton (30-60kN)
Head Rotation	350°
Weight with Battery	5.5 lb (2.5 kg)
Height	15" (380 mm)
Capacity	Standard Strand Wire Classes – B; C Copper: #8 – 500 kcmil (MCM) Aluminum: 1/0 – 350 kcmil (MCM) Fine Strand – Copper Wire Classes – G; H; I; K; M: 1/0 – 350 kcmil (MCM) DLO– Copper Locomotive: #8 –373.7 kcmil (MCM)

Please contact Greenlee Customer Service for specific wire class classification.

EK6IDLX – FLIP TOP STYLE

CAT NO.	UPC NO.	DESCRIPTION
EK6IDLX11	783310610793	6-Ton, Dieless Crimper, 120V Charger, Two 2.0 Ah Batteries
EK6IDLX12	783310610984	6-Ton, Dieless Crimper, 12V Charger, Two 2.0 Ah Batteries
EK6IDLX22	783310610991	6-Ton, Dieless Crimper, 230V Charger, Two 2.0 Ah Batteries
EK6IDLXB	783310610748	6-Ton, Dieless Crimper, Bare Tool Only

EK6IDCLX – PVC COATED

CAT NO.	UPC NO.	DESCRIPTION
EK6IDCLX11	783310080558	6-Ton, Dieless Crimper, 120V Charger, Two 4.0 Ah Batteries
EK6IDCLX12	783310085959	6-Ton, Dieless Crimper, 12V Charger, Two 4.0 Ah Batteries
EK6IDCLX22	783310085966	6-Ton, Dieless Crimper, 230V Charger, Two 4.0 Ah Batteries
EK6IDCLXB	783310080541	6-Ton, Dieless Crimper, Bare Tool Only



ACCESSORIES

CAT NO.	UPC NO.	DESCRIPTION
05167	783310051671	18V 4.0Ah Li-ion Battery
52177	783310521778	18V 2.0Ah Li-ion Battery
52178	783310521785	120V Li-ion Battery Charger
52179	783310521792	230V Li-ion Battery Charger
52180	783310521808	12V Li-ion Battery Charger
12274	783310122746	Carrying Strap



DIELESS

IN-LINE QUAD POINT INDENTER EK6ATILX & EK6FTILX

NEW



EK6ATILX



EK6FTILX

SPECIFICATIONS

Crimping Force	12,400 lb (55 kN)
Height	19.5" (495 mm)
Weight	8.2 lb (3.75 kg)
Battery	18V 4.0Ah Li-ion
Head Rotation	360°

CAPACITY

Open Face	Copper: 6 AWG– 500 kcmil Aluminum: 6 AWG– 400 kcmil
Flip-top	Copper: 6 AWG– 750 kcmil Aluminum: 6 AWG– 750 kcmil

EK6ATILX & EK6FTILX

CAT NO.	UPC NO.	DESCRIPTION
EK6ATILX11	783310084686	6-Ton Quad Point Crimper, Open Face, 120V Charger, Two 4.0Ah Batteries
EK6ATILX12	783310084693	6-Ton Quad Point Crimper, Open Face, 12V Charger, Two 4.0Ah Batteries
EK6ATILX22	783310084709	6-Ton Quad Point Crimper, Open Face, 230V Charger, Two 4.0Ah Batteries
EK6ATILXB	783310085904	6-Ton Quad Point Crimper, Open Face, Bare Tool Only
EK6FTILX11	783310085911	6-Ton Quad Point Crimper, Flip Top, 120V Charger, Two 4.0Ah Batteries
EK6FTILX12	783310085928	6-Ton Quad Point Crimper, Flip Top, 12V Charger, Two 4.0Ah Batteries
EK6FTILX22	783310085935	6-Ton Quad Point Crimper, Flip Top, 230V Charger, Two 4.0Ah Batteries
EK6FTILXB	783310085942	6-Ton Quad Point Crimper, Flip Top, Bare Tool Only

6-TON PISTOL EK6FTLX, EK6ATLX



EK6FTLX

SPECIFICATIONS

Crimping Force	12,400 lb (55kN)
Length	EK6ATLX– 14" (355mm) EK6FTLX– 14-7/8" (378mm)
Weight	EK6ATLX– 12 lb (5.4kg) EK6FTLX– 11 lb (5kg)
Battery	18V 4.0Ah Li-ion

CAPACITY

EK6ATLX	Copper: 6 AWG– 500 kcmil Aluminum: 6 AWG– 400 kcmil
EK6FTLX	Copper: 6 AWG– 750 kcmil Aluminum: 6 AWG– 750 kcmil

EK6FTLX

CAT NO.	UPC NO.	DESCRIPTION
EK6FTLX11	783310611196	6-Ton Quad Point Crimper, Flip Top, 120V Charger, Two 4.0 Ah Batteries
EK6FTLX12	783310611202	6-Ton Quad Point Crimper, Flip Top, 12V Charger, Two 4.0 Ah Batteries
EK6FTLX22	783310611219	6-Ton Quad Point Crimper, Flip Top, 230V Charger, Two 4.0 Ah Batteries
EK6FTLXB	783310611240	6-Ton Quad Point Crimper, Flip Top, Bare Tool Only

EK6ATLX

CAT NO.	UPC NO.	DESCRIPTION
EK6ATLX11	783310611073	6-Ton Quad Point Crimper, Open Face, 120V Charger, Two 4.0 Ah Batteries
EK6ATLX12	783310611080	6-Ton Quad Point Crimper, Open Face, 12V Charger, Two 4.0 Ah Batteries
EK6ATLX22	783310611097	6-Ton Quad Point Crimper, Open Face, 230V Charger, Two 4.0 Ah Batteries
EK6ATLXB	783310611127	6-Ton Quad Point Crimper, Bare Tool Only



EK6ATLX

12-TON PISTOL INDENTER EK12IDLX



EK12IDLX

- Intelli-CRIMP® technology notifies operator with a visual and audible alert in real time if crimp force is not achieved
- Automatic Retraction Stop (ARS) retracts the ram just enough to get ready for the next cycle, saving time and energy
- One trigger controls all tool functions
- Crimping head rotates 350°
- Flip open crimping head will allow crimping of 4 AWG– 1000 kcmil copper or 6 AWG– 1000 kcmil aluminum with no dies to change

SPECIFICATIONS

Crimping Force	24,000 lb (106 kN)
Length	16 1/2" (420 mm)
Weight	15 lb (6.8 kg)
Height	14 1/2" (368 mm)
Battery	18V 4.0Ah Li-ion
Capacity	Copper Color Coded Lugs and Splices: 4 AWG– 1000 kcmil Aluminum Color Coded Lugs and Splices: 6 AWG– 1000 kcmil

EK12IDLX

CAT NO.	UPC NO.	DESCRIPTION
EK12IDLX11	783310611349	12-Ton Dieless Crimper, Flip Top, 120V Charger, Two 4.0 Ah Batteries
EK12IDLX12	783310611356	12-Ton Dieless Crimper, Flip Top, 12V Charger, Two 4.0 Ah Batteries
EK12IDLX22	783310611363	12-Ton Dieless Crimper, Flip Top, 230V Charger, Two 4.0 Ah Batteries
EK12IDLXB	783310611394	12-Ton Dieless Crimper, Flip Top, Bare Tool Only



DIELESS

ACCESSORIES

CAT NO.	UPC NO.	DESCRIPTION
05167	783310051671	18V 4.0Ah Li-ion Battery
52178	783310521785	120V Li-ion Battery Charger
52179	783310521792	230V Li-ion Battery Charger
52180	783310521808	12V Li-ion Battery Charger
12274	783310122746	Carrying Strap

HIGH PRESSURE HOSES



NC-6-38MF
NC-10-38MF
NC-30-38MF

- Comes pre-charged in 6', 10', and 33' lengths
- Standard 3/8" NPT screw type male and female fittings installed
- High pressure – up to 10,000 PSI
- Certified non-conductive
- Double rubber cap comes standard to protect fittings while not in use

CAT NO.	UPC NO.	DESCRIPTION
NC-10-38MF	783310024101	Hose, HYD, 3/8 Male/Female (10')
NC-30-38MF	783310024118	Hose, HYDC, 3/8 Male/Female (10 m)
NC-6-38MF	783310024071	Hose, HYD, 3/8 Male/Female (6')

10,000 PSI HIGH PRESSURE COUPLERS



130868



130878



54169



F024631



F022061



F021627

CAT NO.	UPC NO.	DESCRIPTION
130868	783310406471	Coupler-Hyd Parker #3010-2-542 Male
130878	783310406525	Coupler-Hyd Female 1/4-19 NPSM
54169	783310541691	Coupler-Half 1/4" Male Nipple
F024631	783310420965	Coupler, Female 1/4"-18 NPTM
F022061	783310419419	Coupler-HYD, Male 3/8-18 NPTF
F021627	783310418771	Coupler, Female 3/8"-18 NPTM

CRIMPING REMOTES



RK1550

RK1550

SPECIFICATIONS

Crimping Force at 10,000 PSI (700 bar)	30,000 lb (133kN)
Length	15" (380 mm)
Width	3" (76 mm)
Height	5-3/8" (135 mm)
Weight	14.1 lb (6.4 kg)
Operating Pressure	10,000 PSI (700 bar)
Capacity	Copper Color-Coded Lugs and Splices: #8 to 1500 kcmil (MCM) Aluminum Color-Coded Lugs and Splices: #8 to 1000 kcmil (MCM)

CAT NO.	UPC NO.	DESCRIPTION
RK1550	783310053538	Remote Crimping Tool, 15-Ton Kearney Style



RK1550FT

RK1550FT

SPECIFICATIONS

Crimping Force at 10,000 PSI (700 bar)	30,000 lb (135 kN)
Length	13.75" (349 mm)
Width	3" (76 mm)
Height	5" (127 mm)
Weight	11.4 lb (5.2 kg)
Operating Pressure	10,000 PSI (700 bar)
Capacity	Copper Color-Coded Lugs and Splices: #8 to 1500 kcmil (MCM) Color-Coded Lugs and Splices: #8 to 1250 kcmil (MCM)

CAT NO.	UPC NO.	DESCRIPTION
RK1550FT	783310005520	Remote Crimping Tool, 15-Ton, Flip-Top
UA15T	783310002604	Die Adapters – Greenlee® "U" style dies, Burndy® "U" style dies, ILSCO® ILD style dies, Thomas & Betts® 15500 style dies, Blackburn® 15500 style dies

CRIMPING REMOTES

RK1240, RK1240C



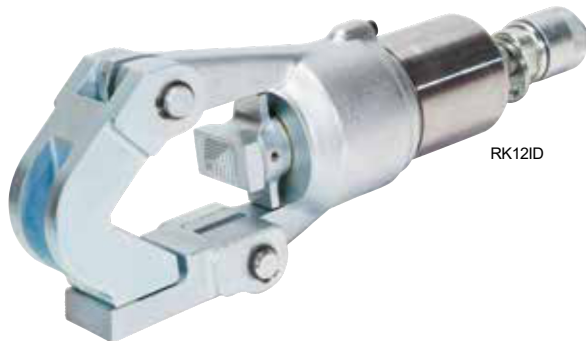
RK1240

SPECIFICATIONS

Crimping Force	24,000 lb (106 kN)
Length	11-7/8" (302 mm)
Weight	RK1240– 9.7 lb (4.4 kg)
Operating Pressure	10,000 PSI (700 bar)
Capacity	8 AWG– 750 kcmil Copper lugs and splices 8 AWG– 750 kcmil Aluminum lugs and splices



RK1240C



RK12ID

RK12ID

SPECIFICATIONS

Crimping Force	24,000 lb (106 kN)
Length	13" (330 mm)
Width	3.75" (95 mm)
Weight	9.75 lb (4.42 kg)
Operating Pressure	10,000 PSI (700 bar)
Capacity	4 AWG– 1000 kcmil copper lugs and splices 6 AWG– 1000 kcmil Aluminum lugs and splices

RK6040



RK6040

SPECIFICATIONS

Crimping Force	120,000 lb (530 kN)
Length	17" (432 mm)
Width	6" (153 mm)
Weight	45 lb (20 kg)
Operating Pressure	10,000 PSI (700 bar)
Capacity	Copper Stranded Code Cable 300 kcmil–2000 kcmil Aluminum Stranded Code Cable 250 kcmil–2000 kcmil Copper Tension Sleeves 1/0 AWG–1000 kcmil Aluminum Tension Sleeves 1/0 AWG–2300 kcmil ACSR Tension Sleeves 1/0 AWG–2156 (Bluebird) kcmil Copper Aerial Connectors 4/0 AWG–2500 kcmil Aluminum Aerial Connectors 3/0 AWG–2500 kcmil

CAT. NO.	UPC NO.	DESCRIPTION
RK1240	783310053514	Crimping Tool SA 12T 42 mm (RK1240)
RK1240C	783310072058	Crimping Tool Assembly, 42 mm-PVC COV
RK12ID	783310015659	Crimping Tool, Dieless Remote
RK6040	783310106043	60-Ton Crimping Tool – Single Acting
54169	783310541691	Coupler-Half 1/4" Male Nipple
130868	783310406471	Coupler-HYD Parker #3010-2-542 Male
130878	783310406525	Coupler-HYD Female 1/4-18 NPSM
F021627	783310418771	Coupler, Female 3/8-18 NPTM
F022061	783310419419	Coupler-HYD Male 3/8-18 NPTF
F024631	783310420965	Coupler, Female 1/4-18 NPTM

HYDRAULIC PUMP ACCESSORIES

Hydraulic Hose Selection Guide

TOOL CAT. NO.	DESCRIPTION	TOOL COUPLER	PUMP CAT. NO.	HOSE CAT. NO.
750	Cable Cutter	1/4" Female Coupler	767	38316
750	Cable Cutter	1/4" Female Coupler	1725	37729
750	Cable Cutter	1/4" Female Coupler	975	17707
777	Bender	3/8" Female Coupler	755, 975, or 980	11289
782	Bender	3/8" Female Coupler	755 or 975	11289
800	Cable Bender	1/4" Female Coupler	1725	37729
880	Bender	3/8" Female Coupler	755 or 975	11289
882	Bender	3/8" Female Coupler	755 or 975	11289
884	Bender	3/8" Female Coupler	980	11289
885	Bender	3/8" Female Coupler	980	11289
1731	C-Frame Driver	1/4" Female Coupler	767	06302
1731	C-Frame Driver	1/4" Female Coupler	1725	37729
1731	C-Frame Driver	1/4" Female Coupler	755 or 975	11289
SDK2021GL	Cable Cutter	3/8" Male Coupler	7475H, 975 or 980	05850, 05851
RK06AT, RK06FT	Crimping Tool	3/8" Male Coupler	7475H, 975 or 980	05850, 05851
RK1240,	Crimping Tool	3/8" Male Coupler	7475H, 975 or 980	05850, 05851
RK1550	Crimping Tool	3/8" Male Coupler	7475H, 975 or 980	05850, 05851



SOFT-METAL CUTTING



IN-LINE CABLE CUTTERS ES32LX



ES32LX



COPPER/ALUMINIUM CUTTER

- Small size makes the ES32LX an excellent tool for use inside panel boxes
- In-line tool style is light weight and very easy to control
- One trigger controls all tool functions
- Tools automatically retract when the cutting cycle is complete
- Head rotates 350°

SPECIFICATIONS

Height	15-1/2" (394 mm)
Width	2-7/8" (73 mm)
Weight	5 lb (2.2 kg)
Capacity	600 kcmil (304 mm) Cu or Al cable

ES32LX

CAT NO.	UPC NO.	DESCRIPTION
ES32LX11	783310611943	32 mm Soft Metal Cable Cutter, 120V Charger, Two 2.0 Ah Batteries
ES32LX12	783310611950	32 mm Soft Metal Cable Cutter, 12V Charger, Two 2.0 Ah Batteries
ES32LX22	783310611967	32 mm Soft Metal Cable Cutter, 230V Charger, Two 2.0 Ah Batteries
ES32LXB	783310611998	32 mm Soft Metal Cable Cutter, Bare Tool Only

ACCESSORIES

CAT NO.	UPC NO.	DESCRIPTION
05167	783310051671	18V 4.0Ah Li-ion Battery
52177	783310521778	18V 2.0Ah Li-ion Battery
52178	783310521785	120V Li-ion Battery Charger
52179	783310521792	230V Li-ion Battery Charger
52180	783310521808	12V Li-ion Battery Charger
HE.10314	783310120926	Movable Blade
HE.10315	783310120933	Fixed Blade
12274	783310122746	Carrying Strap

IN-LINE CABLE CUTTER

ESC35LX, ESC50LX

- Cutting head rotates 350°
- Tool automatically retracts when the cutting cycle is complete
- Overmolded tacky grip area make gripping the tool easier and more comfortable
- Retraction stop feature reduces time between cuts on smaller wire sizes

NEW



ESC35LX



ESC50LX

SPECIFICATIONS

	ESC35LX	ESC50LX
Height	18" (457 mm)	21" (533 mm)
Width	3" (76 mm)	3" (76 mm)
Length	4.5" (114 mm)	4.5" (114 mm)
Weight	6.6 lb (3 kg)	7.2 lb (3.25 kg)
Capacity	Cuts up to 1.38" diameter Copper (Cu) and Aluminum (Al) Standard/ Fine Stranded Cable	Cuts up to 2" diameter Copper (Cu)/ Aluminum (Al) Standard and Fine Stranded Cable

ESC35LX

CAT NO.	UPC NO.	DESCRIPTION
ESC35LX11	783310613350	35 mm Soft Metal Cable Cutter, 120V Charger, Two 2.0 Ah Batteries
ESC35LX12	783310613367	35 mm Soft Metal Cable Cutter, 12V Charger, Two 2.0 Ah Batteries
ESC35LX22	783310613374	35 mm Soft Metal Cable Cutter, 230V Charger, Two 2.0 Ah Batteries

ESC50LX

CAT NO.	UPC NO.	DESCRIPTION
ESC50LX11	783310080060	50 mm Soft Metal Cable Cutter, 120V Charger, Two 4.0 Ah Batteries
ESC50LX12	783310080077	50 mm Soft Metal Cable Cutter, 12V Charger, Two 4.0 Ah Batteries
ESC50LX22	783310080107	50 mm Soft Metal Cable Cutter, 230V Charger, Two 4.0 Ah Batteries
ESC50LXB	783310080053	50 mm Soft Metal Cable Cutter, Bare Tool Only



COPPER/ALUMINIUM CUTTER

ACCESSORIES

CAT NO.	UPC NO.	DESCRIPTION
ES35E	783310071891	Cutting Blade (2)
05167	783310051671	18V 4.0Ah Li-ion Battery
52178	783310521785	120V Li-ion Battery Charger
52179	783310521792	230V Li-ion Battery Charger
52180	783310521808	12V Li-ion Battery Charger
12274	783310122746	Carrying Strap

PISTOL STYLE CABLE CUTTERS ESG50LX



ESG50LX



COPPER/ALUMINIUM CUTTER

SPECIFICATIONS

Length	15-3/4" (400 mm)
Width	3-1/8" (80 mm)
Height	13" (330 mm)
Weight	9.8 lb (4.4 kg)
Capacity	Cuts up to 2" diameter Copper (Cu)/ Aluminum (Al) Standard and Fine Stranded Cable

ESG50LX

CAT NO.	UPC NO.	DESCRIPTION
ESG50LX11	783310612421	50 mm Soft Metal Cable Cutter, 120V Charger, Two 4.0 Ah Battery
ESG50LX12	783310612438	50 mm Soft Metal Cable Cutter, 12V Charger, Two 4.0 Ah Battery
ESG50LX22	783310612445	50 mm Soft Metal Cable Cutter, 230V Charger, Two 4.0 Ah Battery
ESG50LXB	783310611011	Cutter, 50 mm STD, Bare Tool Only

ACCESSORIES

CAT NO.	UPC NO.	DESCRIPTION
05167	783310051671	18V 4.0Ah Li-ion Battery
52178	783310521785	120V Li-ion Battery Charger
52179	783310521792	230V Li-ion Battery Charger
52180	783310521808	12V Li-ion Battery Charger
12274	783310122746	Carrying Strap
ESG50ES	783310041818	Blade, Cutting
ESG50EF1	783310041849	Head, Cutting

PISTOL STYLE CABLE CUTTERS

ESC85LX, ESC105LX,
ESG105LX

- 350° rotating guillotine cutting head
- Dual position handles for easy operation and transport
- Single trigger operation
- Automatic retraction after completed cycle

SPECIFICATIONS

	ESC85LX	ESC105LX, ESG105LX
Length	21" (533 mm)	23-3/4" (604 mm)
Width	3-1/8" (80 mm)	3-1/8" (80 mm)
Height	13" (330 mm)	22 lb (9.9 kg)
Weight	15.2 lb (6.9 kg)	13" (330 mm)
Capacity	3.35" diameter (85 mm) Communications, Cu & Al Power Cables	4" diameter (105 mm) Communications, Cu & Al Power Cables



ESC85LX



ESC105LX



ESG105LX



COPPER/ALUMINIUM CUTTER

ESC85LX

CAT NO.	UPC NO.	DESCRIPTION
ESC85LX11	783310612759	85 mm Soft Metal Cable Cutter, 120V Charger, Two 4.0 Ah Batteries
ESC85LX12	783310612766	85 mm Soft Metal Cable Cutter, 12V Charger, Two 4.0 Ah Batteries
ESC85LX22	783310612773	85 mm Soft Metal Cable Cutter, 230V Charger, Two 4.0 Ah Batteries
ESC85LXB	783310612803	85 mm Soft Metal Cable Cutter, Bare Tool Only

ESC105LX – SCISSOR STYLE

CAT NO.	UPC NO.	DESCRIPTION
ESC105LX11	783310612636	105 mm Soft Metal Cable Cutter, 120V Charger, Two 4.0 Ah Batteries
ESC105LX12	783310612643	105 mm Soft Metal Cable Cutter, 12V Charger, Two 4.0 Ah Batteries
ESC105LX22	783310612650	105 mm Soft Metal Cable Cutter, 230V Charger, Two 4.0 Ah Batteries
ESC105LXB	783310612681	105 mm Soft Metal Cable Cutter, Bare Tool Only

ESG105LX – GUILLOTINE STYLE

CAT NO.	UPC NO.	DESCRIPTION
ESG105LX11	783310612513	105 mm Soft Metal Cable Cutter, 120V Charger, Two 4.0 Ah Batteries
ESG105LX12	783310612520	105 mm Soft Metal Cable Cutter, 12V Charger, Two 4.0 Ah Batteries
ESG105LX22	783310612537	105 mm Soft Metal Cable Cutter, 230V Charger, Two 4.0 Ah Batteries
ESG105LXB	783310612568	Cable Cutter, Li-ion, 105 mm STD, Bare Tool Only

ACCESSORIES

CAT NO.	UPC NO.	DESCRIPTION
05167	783310051671	18V 4.0Ah Li-ion Battery
52177	783310521778	18V 2.0Ah Li-ion Battery
52178	783310521785	120V Li-ion Battery Charger
52179	783310521792	230V Li-ion Battery Charger
52180	783310521808	12V Li-ion Battery Charger
12274	783310122746	Carrying Strap
HE.10310	783310234920	Handle (ESC105LX, ESG105LX)



HARD-METAL CUTTING

IN-LINE ACSR CUTTER ES20LX



ES20LX

SPECIFICATIONS

Height	15" (381 mm)
Width	2-7/8" (73 mm)
Weight	4.6 lb (2 kg)

CAPACITY

Max Diameter	3/4" diameter
ACSR	336.4 kcmil Merlin
Standard Guy Strand	3/8" diameter
Ground Rod	3/8" diameter
Rebar (SCH60)	3/8" diameter
Soft Steel Bolts	3/8" diameter

ES20LX

CAT NO.	UPC NO.	DESCRIPTION
ES20LX11	783310612186	20 mm ACSRCutter, 120V charger, Two 4.0Ah Batteries
ES20LX12	783310612193	20 mm ACSRCutter, 12V charger, Two 4.0Ah Batteries
ES20LX22	783310612209	20 mm ACSRCutter, 230V charger, Two 4.0Ah Batteries
ES20LXB	783310612230	20 mm ACSRCutter, Bare Tool Only

ACCESSORIES

CAT NO.	UPC NO.	DESCRIPTION
ES20E	783310055259	Blade Kit
52176	783310521761	18V 4.0Ah Li-ion Battery
52177	783310521778	18V 2.0Ah Li-ion Battery
52178	783310521785	120V Li-ion Battery Charger
52179	783310521792	230V Li-ion Battery Charger
52180	783310521808	12V Li-ion Battery Charger
12274	783310122746	Carrying Strap



IN-LINE ACSR CUTTERS

ESC25LX, ESG25LX

NEW



ESC25LX



SPECIFICATIONS

Width	3" (76 mm)
Height	18.5" (470 mm)
Weight	7 lb (3.17 kg)

CAPACITY

Cutter Head Opening	1" (25 mm)
ACSR	557 kcmil
Standard Guy Strand	1/2" (12 mm)
EHS Guy Strand	3/8" (10 mm)

ESC25LX – SCISSOR STYLE

CAT NO.	UPC NO.	DESCRIPTION
ESC25LX11	783310084907	25 mm ACSRCutter, 120V Charger, Two 4.0Ah Batteries
ESC25LX12	783310084914	25 mm ACSRCutter, 12V Charger, Two 4.0Ah Batteries
ESC25LX22	783310084921	25 mm ACSRCutter, 230V Charger, Two 4.0Ah Batteries
ESC25LXB	783310084938	25 mm ACSRCutter, Bare Tool Only

ACCESSORIES

CAT NO.	UPC NO.	DESCRIPTION
52176	783310521761	18V 4.0Ah Li-ion Battery
52178	783310521785	120V Li-ion Battery Charger
52179	783310521792	230V Li-ion Battery Charger
52180	783310521808	12V Li-ion Battery Charger
12274	783310122746	Carrying Strap



ESG25LX

- Designed to cut ACSR, guy strand, and ground rod
- Guillotine style head
- Equipped with retraction stop to aid in time and battery savings
- Replaceable hardened blades for increased tool longevity

SPECIFICATIONS

Width	2-7/8" (73 mm)
Height	16.5" (419 mm)
Weight	5.8 lb (2.6 kg)

CAPACITY

Cutter Head Opening	1" (25 mm)
ACSR	636 kcmil
Standard Guy Strand	5/8" (16 mm)
EHS Guy Strand	7/16" (11 mm)

ESG25LX – GUILLOTINE STYLE

CAT NO.	UPC NO.	DESCRIPTION
ESG25LX11	783310612308	25 mm ACSRCutter, 120V Charger, Two 4.0 Ah Batteries
ESG25LX12	783310612315	25 mm ACSRCutter, 12V Charger, Two 4.0 Ah Batteries
ESG25LX22	783310612322	25 mm ACSRCutter, 230V Charger, Two 4.0 Ah Batteries
ESG25LXB	783310612353	25 mm ACSRCutter, Bare Tool Only



ACSR CUTTERS

ESG45LX, ESG55LX



ESG45LX



- Designed specifically to cut ACSR, guy strand and ground rods
- Retraction Stop allows the operator to stop the ram retraction at any point simply by tapping the trigger, and then starting the next cutting cycle from that point saving time and energy
- Two-stage hydraulic system provides fast advance and power speeds
- One trigger controls all tool functions
- Cutting head rotates 350°
- Tools automatically retract when the cutting cycle is complete

SPECIFICATIONS

Width	4" (101 mm)
Height	20" (508 mm)
Weight	10 lb (4.5 kg)

CAPACITY

ACSR	1590 kcmil
Standard Guy Strand	5/8" diameter (16 mm)
EHS Guy Strand	1/2" diameter (13 mm)

ESG45LX

CAT NO.	UPC NO.	DESCRIPTION
ESG45LX11	783310612872	45 mm ACSRCutter, 120V Charger, Two 4.0 Ah Batteries
ESG45LX12	783310612889	45 mm ACSRCutter, 12V Charger, Two 4.0 Ah Batteries
ESG45LX22	783310612896	45 mm ACSRCutter, 230V Charger, Two 4.0 Ah Batteries
ESG45LXB	783310612926	45 mm ACSRCutter, Bare Tool Only

ACCESSORIES

CAT NO.	UPC NO.	DESCRIPTION
52176	783310521761	18V 4.0Ah Li-ion Battery
52178	783310521785	120V Li-ion Battery Charger
52179	783310521792	230V Li-ion Battery Charger
52180	783310521808	12V Li-ion Battery Charger
12274	783310122746	Carrying Strap



ESG55LX



- Lightweight and very easy to handle
- One trigger controls all tool functions
- Cutting head rotates 350°
- Tools automatically retract when the cutting cycle is complete

SPECIFICATIONS

Length	18-1/8" (460 mm)
Width	3-1/8" (80 mm)
Height	13-1/4" (337 mm)
Weight	17.5 lb (8 kg)

CAPACITY

ACSR	2515 kcmil
Standard Guy Strand	5/8" diameter (16 mm)
EHS Guy Strand	9/16" diameter (14 mm)

ESG55LX

CAT NO.	UPC NO.	DESCRIPTION
ESG55LX11	783310612995	55 mm ACSRCutter, 120V Charger, Two 4.0 Ah Batteries
ESG55LX12	783310613008	55 mm ACSRCutter, 12V Charger, Two 4.0 Ah Batteries
ESG55LX22	783310613015	55 mm ACSRCutter, 230V Charger, Two 4.0 Ah Batteries
ESG55LXB	783310613046	55 mm ACSRCutter, Bare Tool Only

IN-LINE BOLT CUTTERS ETS8LX



ETS8LX



SPECIFICATIONS

Weight	3.3 lb (1.5 kg)
Length	12-1/8" (308 mm)
Battery	18V 2.0Ah Li-ion

MATERIAL	DIAMETER				
	1/16"	1/8"	3/16"	1/4"	5/16"
Cable Tray (Mild steel, Zinc Plated)	X	X	X	X	X
Cable Tray (Stainless Steel)	X	X	X	X	
Threaded Rods	X	X	X	X	X
Threaded Rods, Stainless Steel	X	X	X	X	X
Steel Bolts (Grade 2)	X	X	X	X	X
Steel Bolts (Grade 8)	X	X	X	-	-

ETS8LX

CAT NO.	UPC NO.	DESCRIPTION
ETS8LX11	783310611707	8 mm Bolt Cutter, 120V Charger, Two 2.0 Ah Batteries
ETS8LX12	783310611714	8 mm Bolt Cutter, 12V Charger, Two 2.0 Ah Batteries
ETS8LX22	783310611721	8 mm Bolt Cutter, 230V Charger, Two 2.0 Ah Batteries
ETS8LXB	783310611752	8 mm Bolt Cutter, Bare Tool Only

ACCESSORIES

CAT NO.	UPC NO.	DESCRIPTION
52177	783310521778	18V 2.0Ah Li-ion Battery
52178	783310521785	120V Li-ion Battery Charger
52179	783310521792	230V Li-ion Battery Charger
52180	783310521808	12V Li-ion Battery Charger
HB.9856	783310199878	Cutting Head

IN-LINE BOLT CUTTERS ETS12LX



ETS12LX



- In-line tool style is light weight and very easy to control
- One trigger controls all tool functions
- Tools automatically retract when the cutting cycle is complete

SPECIFICATIONS

Height	13-5/8" (365 mm)
Width	2-7/8" (73 mm)
Weight	4.4 lb (2.0 kg)

CUTTING CAPACITY

Common Bolt	1/2" diameter
Grade 5 Bolt	7/16" diameter
Grade 8 Bolt	5/16" diameter
Threaded Rod	1/2" diameter
One-Time Disposable Lock	4 AWG Alumoweld
Boa Lock	BL-9
Grade 40 Rebar	3/8" diameter
Steel Rod	3/8" diameter (1/2" diameter using two cycles)
Ground Rod	3/8" diameter (1/2" diameter using two cycles)
Copper and Aluminum Cable	2/0 AWG
ACSR	3/0 AWGPigeon (4/0 AWGPigeon using two cycles)
Guy Strand	5/16" diameter (3/8" diameter using two cycles)
EHS Guy Strand	5/16" diameter
Aircraft Cable	1/4" diameter

ETS12LX

CAT NO.	UPC NO.	DESCRIPTION
ETS12LX11	783310611820	8 mm Bolt Cutter, 120V Charger, Two 2.0 Ah Batteries
ETS12LX12	783310611837	8 mm Bolt Cutter, 12V Charger, Two 2.0 Ah Batteries
ETS12LX22	783310611844	8 mm Bolt Cutter, 230V Charger, Two 2.0 Ah Batteries
ETS12LXB	783310611875	8 mm Bolt Cutter, Bare Tool Only
HB.9864	783310562887	Blade Set (ETS12LX)

REMOTE CUTTING HEADS



SDK105



SDG85



SDG45



SDG105



SDG55



SPECIFICATIONS	SDG45	SDG55	SDG85	SDG105	SDK105
Length	16-5/8" (423 mm)	18-18" (460 mm)	21" (533 mm)	23-3/4" (604 mm)	20" (510 mm)
Weight	8.38 lb (3.8 kg)	12.35 lb (5.6 kg)	9.48 lb (4.3 kg)	16.98 lb (7.7 kg)	17 lb (7.7 kg)
Connector	3/8" NPT Male (Screw-Type)	3/8" NPT Male (Screw-Type)	3/8" NPT Male (Screw-Type)	3/8" NPT Male (Screw-Type)	3/8" NPT Male (Screw-Type)
Communications, Cu & Al Power Cables	1-3/4" (50 mm)	2-1/8" (55 mm)	3-3/8" (85 mm)	4" (105 mm)	4" (105 mm)
ACSR	1590 kcmil (MCM)	2515 kcmil	-	-	-

STANDARD GUY STRAND	SDG45	SDG55
Standard Guy Strand	5/8" (16 mm)	5/8" (16 mm)
EHS Guy Strand	1/2" (13 mm)	9/16" (14 mm)
Ground Rod	5/8" (16 mm)	3/4" (19 mm)
Rebar	1/2" (13 mm)	5/8" (16 mm)
Wire Rope	5/8" (16 mm)	5/8" (16 mm)
Copper and Aluminum Cable	1500 kcmil (MCM)	1500 kcmil (MCM)

ACSR, GUY STRAND & STEEL CUTTING

SELECTION GUIDE FOR ACSR, GUY STRAND & STEEL CUTTERS

	ACSR	STD. GUY STRAND	EHS GUY STRAND	GROUND ROD	REBAR (SCHEDULE 60)
BATTERY POWERED					
ES20	336.4 kcmil (Merlin)	3/8" (9 mm)	3/8" (9 mm)	3/8" (9 mm)	
ESC25	557 kcmil	1/2" (12 mm)	3/8" (9 mm)	3/8" (9 mm)	3/8" (9 mm)
ESG25	636 kcmil	5/8" (16 mm)	7/16" (11 mm)	3/8" (9 mm)	3/8" (9 mm)
ESG45	1590.0 kcmil	5/8" (16 mm)	1/2" (13 mm)	5/8" (16 mm) dia.	1/2" (13 mm)
ESG55	2515 kcmil (Joree 76/19)	5/8" (16 mm)	9/16" (14 mm)	3/4" (19 mm)	5/8" (16 mm)

COPPER AND ALUMINUM CUTTING

SELECTION GUIDE FOR COPPER & ALUMINUM CABLE CUTTERS

CABLE SIZE																					
	AWG	#8	#6	#4	#2	#1	1/0	2/0	3/0	4/0	250 KCMIL	300 KCMIL	350 KCMIL	400 KCMIL	500 KCMIL	600 KCMIL	750 KCMIL	1000 KCMIL	1500 KCMIL	2000 KCMIL	
	mm	6	10	16	25	35	40	50	70	95	120	150	150	185	240	300	400	500	800	1000	
BATTERY POWERED																					
ES32	Al	X	X	X	X	X	X	X	X	X	X	X	X	X	X	-	-	-	-	-	
	Cu	X	X	X	X	X	X	X	X	X	X	X	X	X	X	-	-	-	-	-	
ESC35	Al	X	X	X	X	X	X	X	X	X	X	X	X	X	X	X	X	X	X	-	-
	Cu	X	X	X	X	X	X	X	X	X	X	X	X	X	X	X	X	X	X	-	-
ESC50	Al	X	X	X	X	X	X	X	X	X	X	X	X	X	X	X	X	X	X	X	X
	Cu	X	X	X	X	X	X	X	X	X	X	X	X	X	X	X	X	X	X	X	X
ESG50	Al	X	X	X	X	X	X	X	X	X	X	X	X	X	X	X	X	X	X	X	X
	Cu	X	X	X	X	X	X	X	X	X	X	X	X	X	X	X	X	X	X	X	X
ESC85	Al	X	X	X	X	X	X	X	X	X	X	X	X	X	X	X	X	X	X	X	X
	Cu	X	X	X	X	X	X	X	X	X	X	X	X	X	X	X	X	X	X	X	X
ESC105 ESG105	Al	X	X	X	X	X	X	X	X	X	X	X	X	X	X	X	X	X	X	X	X
	Cu	X	X	X	X	X	X	X	X	X	X	X	X	X	X	X	X	X	X	X	X

10K PSI PUMP

EHP700L



EHP700L



- Capable of powering any high-pressure hydraulic remote head
- Equipped with Intelli-CRIMP® technology to monitor crimping force
- Retraction Stop Repeat (RSR) allows users to teach pump where to start and stop each cycle
- Real-time LED readout permits user to visually monitor pressure cycle
- Job specific crimp, cut, and punch settings
- Mode dial allows for pump to learn new operating cycles
- Dual battery ports – 1 active/1 stored

SPECIFICATIONS

Length	14" (356 mm)
Width	6-1/2" (165 mm)
Height	11-1/2" (292 mm)
Weight	14.1 lb (6.4 kg)
Operating Pressure	10,000 psi (700 bar)

EHP700L

CAT NO.	UPC NO.	DESCRIPTION
EHP700L11	783310007357	Power Pump, Li-ion, STD, 120V
EHP700L12	783310007647	Power Pump, Li-ion, STD, 12V
EHP700L22	783310007654	Power Pump, Li-ion, STD, 230V
EHP700L120	783310007661	Power Pump, Li-ion, STD, 120V AC
EHP700L230	783310007678	Power Pump, Li-ion, STD, 230V AC
EHP700LB	783310011514	Power Pump, Li-ion, STD, Bare

ACCESSORIES

CAT NO.	UPC NO.	DESCRIPTION
52176	783310521761	18V 3.0Ah Li-ion Battery
52178	783310521785	120V Li-ion Battery Charger
52179	783310521792	230V Li-ion Battery Charger
52180	783310521808	12V Li-ion Battery Charger
TG3	783310010548	Strap
25766	783310257660	Adapter, Charger 18V Li-ion to 12V Ni
EAC18120	783310521914	Adapter, AC – 230V to 18V
HTA4GL	783310007593	Remote Control
EL122/32	783310020424	Hydraulic Fluid, Biodegradable
17707	783310177074	Hose Assembly, 1/4" X 10' 3/8M & 1/4M Filled
05850	783310058502	Hose Assembly, 1/4" X 10' 3/8M & 3/8F Filled
01058	783310010586	Hose Assembly, 1/4" X 6' 3/8M & 1/4M Filled
01059	783310010593	Hose Assembly, 1/4" X 6' 3/8M & 3/8F Filled



DEDICATED SERVICE SUPPORT

Our dedicated Greenlee factory authorized service center repair team will quickly get your battery tools back up and running.



05167

Makita® 18V LXT® Lithium-Ion 4.0Ah Battery*

- Delivers 35% more run time per charge compared to the 18V 3.0Ah battery
- Reaches a full charge in under 40 minutes – 2X faster than the leading competitor
- Impact-resistant outer case and shock-absorbing inner-liner
- Sixteen contact terminals maintain a constant connection with the tool to help prevent power loss or fluctuation, even during high-vibration applications
- Battery resists self-discharge and remains ready for use even after long periods of storage
- Makita offers the world's largest cordless tool lineup powered by an 18V Lithium-Ion slide-style battery
- Use all appropriate and applicable personal safety equipment as required, such as: safety shoes, hard hat, safety glasses or face shield, etc.

Makita® 18V LXT® Lithium-Ion 2.0Ah Battery*

- Provides up to 50% more run time per charge compared to the 18V 1.5Ah battery (BL1815)
- Reaches a full charge in 25 minutes or less on the Makita Rapid Optimum Charger (sold separately)
- Compatible with all Makita 18V LXT® and 18V Compact cordless tools
- Battery delivers consistent power and run time in extreme temperatures, even in winter (-4°F/-20°C)
- Impact-resistant outer case and shock-absorbing inner-liner are engineered to protect the battery
- Battery resists self-discharge and remains ready for use even after long periods of storage



05167

Makita® 18V LXT® Lithium-Ion Chargers

CHARGERS

CAT. NO.	UPC NO.	DESCRIPTION
52178	783310521785	Single Bay 120V Charger
05754	783310057543	Dual Bay 120V Charger
05755	783310057550	Quad Bay 120V Charger



52178



05754



05755

*The following are reminders and not intended to replace reading instruction manuals and other safety information. Battery tool information available at makitatools.com



GREENLEE GATOR WARRANTY

Greenlee is proud to offer a limited warranty to the original purchaser that our Greenlee product will be free from defects in workmanship and materials for the following time period measured from the date of purchase: seven (7) years for Gator® series cordless and corded tools (excluding batteries) sold after October 1, 2019.

Please note ordinary wear and tear, abuse, neglect or damage resulting from alterations or disregard of the product's instruction manual, as judged solely by Greenlee, are not covered under this limited warranty. Greenlee's sole liability and purchaser's sole remedy for a failure of a product under this limited warranty and for all arising claims from the purchase and use of the Greenlee product shall be limited to the replacement or repair of the product that does not conform to this warranty and SHALL BE IN LIEU OF ANY OTHER LIABILITY OR REMEDY, INCLUDING WITHOUT LIMITATION, ANY CAUSES OF ACTION IN NEGLIGENCE AND STRICT LIABILITY. THERE ARE NO OTHER EXPRESS WARRANTIES COVERING THESE GOODS OTHER THAN AS SET FORTH HEREIN. IMPLIED WARRANTIES OF MERCHANTABILITY AND FITNESS FOR A PARTICULAR PURPOSE ARE EXPLICITLY EXCLUDED. GREENLEE ASSUMES NO OTHER LIABILITY IN CONNECTION WITH THE INSTALLATION OR USE OF THIS PRODUCT EXCEPT AS STATED HEREIN. IN NO EVENT WILL GREENLEE BE LIABLE FOR INCIDENTAL OR CONSEQUENTIAL DAMAGES. Any rental units or demonstration Greenlee products are covered by this limited warranty for 90 days from the date of purchase.

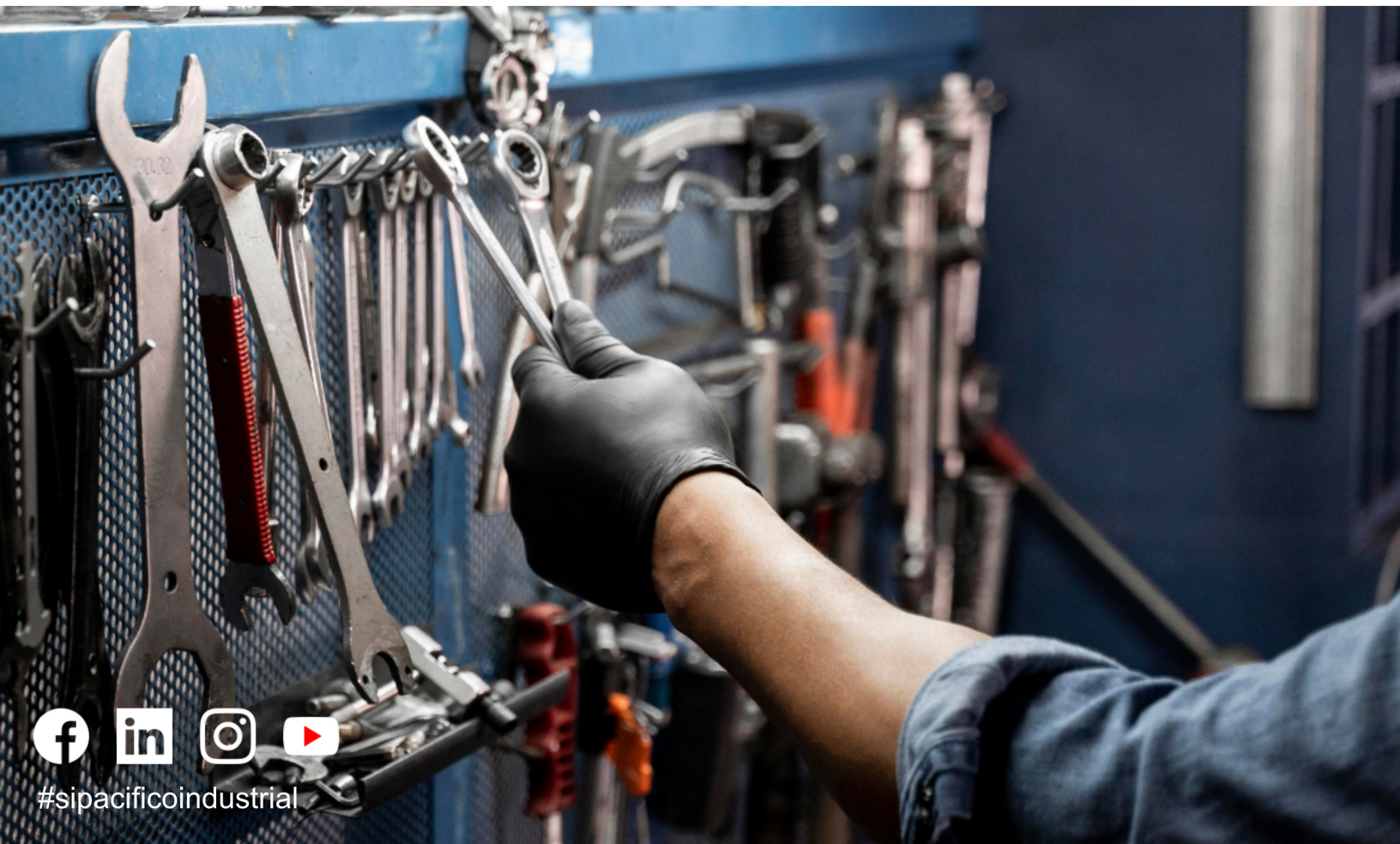
**To make a warranty claim or for general customer support please contact Greenlee at:
Greenlee Tools, Inc.
4411 Boeing Drive or by phone 1 (800) 435-0786
Rockford, IL 61109-2988 USA**

This Greenlee limited warranty gives you specific legal rights. You may also have other legal rights which vary from state to state. Some states do not allow certain limits on implied warranties, or exclusion from incidental or consequential damages, so the above limitations and exclusions may not apply to you in all situations. Greenlee elects not to make the informal dispute settlement mechanism specified in the Magnuson-Moss Warranty Act available under this limited warranty.

All information in this catalog is subject to change without notice. Any product specifications, weights, and measurements listed herein are approximate. All product descriptions are for convenience, these are not a substitute for the close review of the product safety manuals and use of products with appropriate PPE. It is impossible to eliminate all risks associated with the use of Greenlee products. Risks of property damage, serious bodily injury or death, including risks associated with electrocution, arcing and thermal burns, are inherent in work in and around energized electrical systems. Such risks arise from the wide variety of electrical systems and equipment to which Greenlee products may be applied, the manner of use or application, weather and environmental conditions or other unknown factors, all of which are beyond the control of Greenlee. Greenlee does not agree to be an insurer of these risks, and shall have no liability for any claims arising from such risks. **WHEN YOU BUY OR USE THESE PRODUCTS, YOU AGREE TO ACCEPT THESE RISKS.** The availability, listed capacities or features of any Greenlee product may change without notice. All trademarks and all registered trademarks listed in this catalog are property of their respective owners. Greenlee is proud to employ a US work force. We encourage all customers to consult their product packaging to understand the origin of any specific product we offer for sale.

Anderson® and Burndy® are registered trademarks of Hubbell Incorporated.
App Store is a registered trademark of Apple Inc.
Blackburn® and Thomas & Betts® are registered trademarks of Thomas & Betts International, Inc.
Bluetooth is a registered trademark of Bluetooth SIG, Inc.
Google Play is a registered trademark of Google Inc.
Huskie® is a registered trademark of Huskie Tool, INC.
ILSCO® is a registered trademark of ILSCO Corporation.
Kearney is a trademark of Eaton
Makita and LXT are registered trademarks of MAKITA CORPORATION.
Milwaukee® is a registered trademark of the Milwaukee Electric Tool Corporation.
Panduit® is a registered trademark of Panduit Corp.
Penn-Union® is a registered trademark of Penn Union Corp.





#sipacificoindustrial



Servicios Industriales DEL PACIFICO

ALIADO ESTRATEGICO DE LA INDUSTRIA

Teléfono +52 (664) 975 · 6337

Correo contacto@sipacifico.com.mx

Dirección
Ciruelo s/n, Col. Granja Santa Cecilia C.P. 21386
Mexicali Baja California