



Servicios Industriales  
DEL PACÍFICO

CATÁLOGO  
**2023**







## TABLE OF CONTENTS

- Hand Tools | 6 – 53
- Knockouts | 54 – 103
- Power Tool Accessories | 104 – 133
  - Cutting | 134 – 147
  - Bending | 148 – 185
  - Fishing | 186 – 199
  - Cable Pulling | 200 – 239
- Wire & Cable Termination | 240 – 367
  - Test & Measurement | 368 – 491
- Storage & Material Handling | 492 – 521







# FISHING

When you need to fish through conduit, behind walls or above ceilings, Greenlee has a solution. From fish tapes and Fish Stix™, to power fishing systems Greenlee has easy to use tools that help you get the job done faster.

## CONTENTS

Fish Tapes .....	189
– Steel Tapes .....	189
– Non-Metallic Tapes .....	190
– Parts & Accessories .....	191
Fish Rods & Accessories .....	192
Power Fishing .....	194
– Power Fishing Systems.....	194
– Fish Line & Tape.....	198





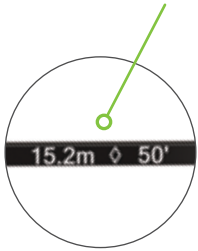
# SmartMARK™

## FISH TAPE WITH MEASUREMENT MARKINGS



**Measurement Markings**

Laser etched feet and meter distance markings every 1' (.3 m)



**Superior Fishing**

Patented design for smooth, rapid pay out and winding



**Speed Flex® Leader**

Fish farther and faster with Speed Flex® Leader

**Viewing Port**

Gives visibility to remaining tape and ability to remove jobsite debris quickly



**Advanced**

Comfort handle grip reduces fatigue



**360° Uniform Grip**

No bump, patented case design



**Flared Case**

Grip ridges for no slip handling



**Rugged Case**

Design improves drop impact capability



SmartMARK™



# FISH TAPES

## Case Types



### SmartMARK™ and Magnum Pro

- Advanced comfort grip
- Rugged case design improves drop impact capability
- Superior rapid tape payout and rewind
- Viewing port to show amount of tape remaining and quick debris removal



### Reel Stand

- Lightweight and portable
- Leaves both hands free








### Winder

- Compact
- Winder for quick reeling

## Steel Fish Tapes



- For general fishing in conduit
- Durable tapes made from oil-tempered spring steel
- Improved low profile tip for easy fishing through all sizes of conduit
- Maximum design strength: 400 lb (1.7 kN)
- 1/8", 1/4" and flat steel profiles to accommodate different fishing situations
- SmartMARK™ tapes are laser etched with feet and meter markings every 1' (.3 m)
- SmartMARK™ tapes allow you to fish farther and faster with the Speed Flex® leader

CAT. NO.	UPC NO.	LENGTH	WIDTH/ DIAMETER	TYPE	END	REPLACEMENT TAPE
FTS438DL-250	783310263012	250'	1/8"	SmartMark™	Speed Flex® Leader	-
FTS438-240	783310127307	240'	1/8"	MagnumPro	Formed Hook	RS438-240 
FTS438-240BP	783310100485	240'	1/8"	MagnumPro (3-Pack)	Formed Hook	RS438-240 
S438W-200	783310124764	200'	1/4"	No Case	Formed Hook	-
FTS438DL-150	783310262992	150'	1/8"	SmartMark™	Speed Flex® Leader	-
FTS438-125	783310127093	125'	1/8"	MagnumPro	Formed Hook	RS438-125 
FTS438-125BP	783310100461	125'	1/8"	MagnumPro (3-Pack)	Formed Hook	RS438-125 
FTS438W-100	783310127109	100'	1/4"	MagnumPro	Formed Hook	RS438W-100 
FTS438-65	783310127291	65'	1/8"	MagnumPro	Formed Hook	RS438-65 
FTS438-65BP	783310100287	65'	1/8"	MagnumPro (3-Pack)	Formed Hook	RS438-65 
438-5H	783310075004	50'	1/8"	5-Pack	Formed Hook	-
438-2X	783310016960	25'	1/4"	Flat-Steel Tape (3-Pack)	Plastic-Tipped	-

## Stainless Steel Fish Tapes



- For general fishing in conduit and wet/corrosive environments
- Corrosion free stainless steel tape for maximum life
- Fish further and faster with Speed Flex® leader
- Maximum design strength: 400 lb (1.7kN)

CAT. NO.	UPC NO.	LENGTH	WIDTH/ DIAMETER	TYPE	END	REPLACEMENT TAPE
FTSS438-200	783310127123	200'	1/8"	MagnumPro	Speed Flex® Leader	RSS438-200 <b>R</b>
FTSS438-100	783310127116	100'	1/8"	MagnumPro	Speed Flex® Leader	RSS438-100 <b>R</b>

## Fiberglass Fish Tapes



- For fishing through conduit with existing cable and near energized lines
- Non-conductive fiberglass tape with low-friction coating for faster and easier fishing
- Perfect for fishing in conduit with wire or cable present
- Maximum design strength: 540 Series– 300 lb (1.3 kN) & 542 Series– 400 lb (1.7 kN)

CAT. NO.	UPC NO.	LENGTH	WIDTH/ DIAMETER	TYPE	END	REPLACEMENT TAPE
542-250	783310357476	250'	3/16"	Reel Stand	Eyelet	05158 <b>R</b>
542-200	783310357469	200'	3/16"	Reel Stand	Eyelet	05157 <b>R</b>
542-150	783310357452	150'	3/16"	Reel Stand	Eyelet	05156 <b>R</b>
FTF540-100	783310127185	100'	11/64"	MagnumPro	Eyelet	RF540-100 <b>R</b>
FTF540-50	783310127178	50'	11/64"	MagnumPro	Eyelet	–

## Nylon Fish Tapes



- For fishing near energized lines when maximum flexibility is needed
- Non-conductive, curl-resistant nylon tape for fast, clean fishing
- Perfect for fishing in conduit with wire or cable present
- Maximum design strength: 250 lb (1.1 kN)

CAT. NO.	UPC NO.	LENGTH	WIDTH/ DIAMETER	TYPE	END	REPLACEMENT TAPE
FTN536-100	783310127161	100'	3/16"	MagnumPro	Eyelet	RN536-100 <b>R</b>
FTN536-50	783310127154	50'	3/16"	MagnumPro	Eyelet	RN536-50 <b>R</b>
RN536-25	783310079651	25'	3/16"	Replacement (No Case)	Eyelet	–

## Flexible Steel Fish Tapes



- For fishing multiple bends and situations that require flexibility
- Multi-strand steel cable for maximum flexibility
- More flexible than steel, stronger than fiberglass or nylon
- Maximum design strength: 500 lb (2.2 kN)

CAT. NO.	UPC NO.	LENGTH	WIDTH/DIAMETER	TYPE	END	REPLACEMENT TAPE
FTFS439-100	783310127147	100'	3/16"	MagnumPro	Eyelet	FS439-100 <b>R</b>
FS439-100	783310124825	100'	3/16"	Double-tipped (no case)	Eyelet	–
FTFS439-50	783310127130	50'	3/16"	MagnumPro	Eyelet	–

Check our website for the latest products



## PARTS & ACCESSORIES



439-2

### Speed Flex® Leader (439-2)

- Silver-solderjoint attaches to any 1/8" (3.2 mm) x .060" (1.5 mm) steel fish tape to provide a slim profile that fishes farther, faster
- High-strength stainless steel cable is used for reliability and long life
- Beveled edges on the leader reduce the possibility of hang-ups when pulling wire
- Up to (6) #10 wires can be attached to the large pulling eye



439-1

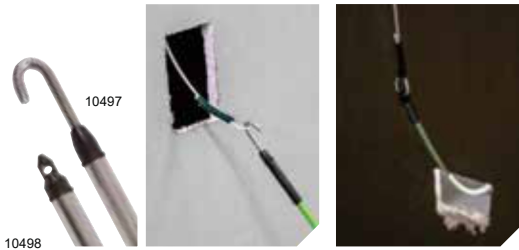
### Flex-O-Twist Leader (439-1)

- Flexible multi-strand steel leader guides fish tape through sharp bends

#### PARTS & ACCESSORIES ORDERING INFORMATION

CAT. NO.	UPC NO.	DIAMETER	DESCRIPTION	COMPATIBLE TAPES
<b>LEADERS</b>				
<b>A</b> 439-1	783310308591	1/8"	Flexible Fish Tape Leader, 12" L	1/8" Steel
<b>A</b> 439-2	783310143925	1/8"	Speed Flex® Leader (solder), 12" L	1/8" Steel
<b>REPLACEMENT PARTS &amp; REPAIR KITS</b>				
<b>R</b> 35919	783310359197	1/8"	Pulling Eye	11/64" Fiberglass
<b>R</b> 35930	783310359302	3/16"	Pulling Eye	3/16" Fiberglass
<b>R</b> 01664	783310016649	3/16"	Replacement Tip (Require K09, K05 or #6 hex to install)	Nylon
	35908	1/8"	Repair Kit (includes threaded ferrule, splice ferrule & pulling eye)	11/64" Fiberglass
	35909	3/16"	Repair Kit (includes threaded ferrule, splice ferrule & pulling eye)	3/16" Fiberglass
<b>A</b> 35750G	783310357506	3/16"	Accessory Kit (Includes flexible leader, eye, splice ferrule, & threaded ferrule)	3/16" Fiberglass
<b>R</b> 10565	783310105657	11/64"	Pulling Eye Repair Kit (Includes pulling eye & adhesive)	11/64" Fiberglass
<b>R</b> 10052	783310100522		12" Case/Handle Replacement	ALL 12" Cases

# FISH RODS & ACCESSORIES



## Fish Stix™ and Glo Stix™

- 200 lb (0.9 kN) maximum pulling strength
- Two different threaded tips accommodate various bundles of wire or cable
- All Fish Stix™ are interchangeable so you can connect our Fish Stix™ with Glo Stix™

### FISH STIX™

- High-visibility green rods allow you to easily spot them above ceilings, in between walls or under floors
- 1/4" (6.4 mm) diameter fiberglass allows you to add rigidity when connecting multiple sections

### GLOSTIX™

- Luminescent fiberglass rods glow in the dark for fishing in dark spaces
- More flexible than FishStix™, so you can fish through outlet box holes to get in between walls
- Sturdy, steel-threaded connectors are interchangeable with Greenlee 1/4" (6.4 mm) Fish Stix™
- Clear, non-metallic storage tube keeps Glo Stix™ charged and ready to use

CAT. NO.	UPC NO.	DESCRIPTION
540-12	783310105046	Fish Stix™ Kit: 1/4" x 12' (6.4 mm x 3.6 m) with bullet & "J" hook nose tips
540-24	783310105060	Fish Stix™ Kit: 1/4" x 24' (6.4 mm x 7.3 m) with bullet & "J" hook nose tips
540-8M	783310129189	Glo Stix™ Kit: 3/16" x 8' long (4.7 mm x 2.4 m) with bullet & "J" hook nose tips
540-15	783310114222	Glo Stix™ Kit: 3/16" x 15' (4.7 mm x 4.6 m) with bullet & "J" hook nose tips
540-18	783310867968	Glo Stix™ Kit: 5/32" x 18' (4.0 mm x 5.5 m) with bullet & "J" hook nose tips
540-20P	783310129196	Professional Installers Kit: (3)-1/4" x 4' Fish Stix™ sections, (2)-3/16" x 2' Glo Stix™ Sections & (1)-5/32" x 4' Glo Stix™ Section, (1) whisk, (1) "J" hook, (1) bullet nose
10497	783310104971	Hook Nose Tip
10498	783310104988	Bullet Nose Tip
11426	783310114260	Whisk Nose Tip

## SPECIFICATIONS

	540-12	540-24	540-8M	540-15	540-18	540-20P
Overall Length	12' (3.6 m)	24' (7.3 m)	8' (2.4 m)	15' (4.6 m)	18' (5.5 m)	6' (1.8 m)
Sections	3	5	5	3	3	6
Section Length	4' (1.2 m)	(3) 6' (1.8 m), (1) 3' (0.9 m) & (1) 3' (0.9 m)	20' (.5 m)	5' (1.5 m)	6' (1.8 m)	†
Diameter	1/4" (6.4 mm)	1/4" (6.4 mm)	3/16" (4.8 mm)	3/16" (4.7 mm)	5/32" (4.0 mm)	5/32" (4.0 mm)
Type	FishStix™	FishStix™	Glo Stix™	Glo Stix™	Glo Stix™	Glo Stix™
Minimum Bend Radius	6 1/2" (165 mm)	6 1/2" (165 mm)	4 1/4" (108 mm)	4 1/4" (108 mm)	3 1/2" (89 mm)	3 1/2" (89 mm)

†540-20P includes: (3)-1/4" x 4' Fish Stix™ sections, (2)-3/16" x 2' Glo Stix™ Sections & (1)-5/32" x 4' Glo Stix™ Section.





### Fish Poles

- Designed specifically for pushing and pulling wires over long distances
- Push or pull wires over suspended ceilings, under sub-floors or crawl spaces and in attics
- Install suspension wires for drop ceilings
- Non-conductive, high-impact construction
- Velcro strap secures pole when in collapsed position
- Self-contained, no loose parts
- Lightweight design to minimize fatigue
- Clip included for easy storage in shirt pocket (FP3 only)
- Magnetic back for retrieving metal objects (FP3 only)



#### SPECIFICATIONS

	FP12	FP18	FP24	FP3
Extended length	12' (3.7 m)	18' (5.48 m)	24' (7.31 m)	38" (965 mm)
Collapsed length	26" (660 mm)	27" (686 mm)	50" (1270 mm)	6-3/8" (162 mm)
Diameter	1 1/4" (32 mm)	2" (50 mm)	2 1/4" (57 mm)	3/8" (9.5 mm)
Weight	1.3 lb (0.6 kg)	2 1/2 lb (1.1 kg)	4 1/4 lb (1.9 kg)	1.6 oz (46 g)



CAT. NO.	UPC NO.	DESCRIPTION
FP12	783310022688	Fish Pole 12 ft
FP18	783310104421	Fish Pole 18 ft
FP24	783310104438	Fish Pole 24 ft
FP3	783310239024	3' Wire Reacher
R 10453	783310104537	Replacement Hook

**NOTE:** This is not for use with live wires.



### CableCaster®

- Significantly speeds up the installation of lightweight communications cable through hard-to-reach spaces such as suspended ceilings, rafters and sub-floors
- Aerodynamic darts provide high accuracy and fast installation
- 50' (15 m) range allows for faster installations with fewer pulls
- Glow-in-the-dark darts are easy to locate
- Pen-light flashlight mount

CAT. NO.	UPC NO.	DESCRIPTION
06186	783310061861	CableCaster® Wire Pulling Tool with Three Darts
R 06259	783310062592	CableCaster® Replacement Darts (Pack of Four)

# POWER FISHING

## 690-15

### VACUUM/BLOWER POWER FISHING SYSTEM



#### SPECIFICATIONS

Capacity	1/2" – 4" Conduit (5" and 6" with optional foam pistons) see page 197
Liquid Capacity	11 gal. (41.6 L)
Power Source	120 VAC
Weight	50 lb (22.7 kg)
Air Flow	(3.40 cMm) 120 cfm
Suction	110" (2794 mm) water lift

KEY	CAT. NO.	UPC NO.	DESCRIPTION
A	24779	783310247791	Piston set for 1/2"-4" conduit (EMT & Rigid)
B	23360	783310233602	Adapter Nozzle for tape and line
C	25646	783310256465	Adapter Cone 1/2"-1" Conduit
D	25644	783310256441	Adapter Cone 1-1/4"-2-1/2" Conduit
E	25645	783310256458	Adapter Cone 3"-4" Conduit
F	595	783310324331	Fish Line – 85 lb (378 N) pulling strength; 2,150' (655 m) long
R	690-RM	783310015529	Replacement Motor for 690-15
R	02468	783310024682	Filter Assembly Kit
R	690-RT	783310015536	Replacement Tank for 690-15
R	RH10	783310015413	Flexible Hose 10' x 1-1/2" (3.05 m x 38.1 mm)
A	RH15	783310015420	Flexible Hose 15' x 1-1/2" (4.57 m x 38.1 mm)
A	RH25	783310015437	Flexible Hose 25' x 1-1/2" (7.62 m x 38.1 mm)

CAT. NO.	UPC NO.	DESCRIPTION
690-15	783310015543	Vacuum/Blower Power Fishing System – 120 VAC



## Li'l Fisher® 390 Power Fishing System

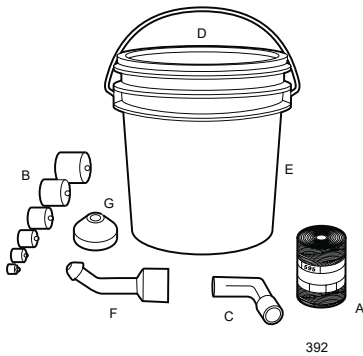


### SPECIFICATIONS

Capacity	1/2"–2" conduit with optional Accessory Kit (2-1/2"-4" with optional foam pistons)
Liquid Capacity	1.75 gal. (6.5 l)
Power Source	120 VAC, 1/2 H.P.
Weight	19 lb (8.6 kg)
Air Flow	101.2 cfm (2.83 cMm)
Suction	137.1" (3482 mm) water lift

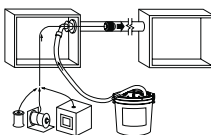
CAT. NO.	UPC NO.	DESCRIPTION
390	783310385943	Li'l Fisher® Vacuum/Blower Power Fishing System – Includes only unit and 38624 hose
<b>A</b> 392	783310390510	Power Fishing System Accessory Kit– Includes all items below

### 392 / 39051 ACCESSORYKIT INCLUDES:

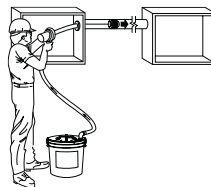


KEY	CAT. NO.	UPC NO.	DESCRIPTION	QTY
A	595	783310324331	Fish Line – 85 lb (378 N) pulling strength; 2,150' (655 m) long	1
B	608	783310110385	Piston for 1/2" Conduit	1
B	609	783310110392	Piston for 3/4" Conduit	1
B	610	783310110408	Piston for 1" Conduit	1
B	611	783310110415	Piston for 1-1/4" Conduit	1
B	612	783310110422	Piston for 1-1/2" Conduit	1
B	613	783310165118	Piston for 2" Conduit	1
C	23360	783310233602	Adapter Nozzle for Measuring Tape	1
D	39063G	783310390633	Accessory Container Lid	1
E	54284	783310542841	Accessory Container	1
F	25646	783310256465	1/2"-1" Cone adapter	1
G	25644	783310256441	1-1/4"-2-1/2" Cone adapter	1

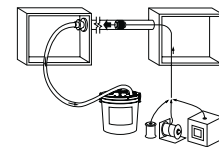
\*See page 197 for replacement pistons



Blowing a piston through conduit using 390 Li'l Fisher® Power Fishing System. Can be used with fish line, poly line or measuring tape.



Blowing a piston through conduit using 390 Li'l Fisher® Power Fishing System using 691 Blow Gun with 595 Mighty Mouser® Fish Line.



Vacuuming a piston through conduit using 390 Li'l Fisher® Power Fishing System. Can be used with fish line, poly line or measuring tape.



## Mighty Mouser® Portable Blower Power Fishing System

- Powerful, will blow line or measuring tape in up to 6" conduit
- Portable, lightweight blower has shoulder strap to make it easy to carry and allow the operator to have both hands free
- Efficient, includes the Mighty Mouser® blow gun for fast, easy line blowing

### SPECIFICATIONS

Capacity	1/2" – 4" Conduit (5" and 6" with optional foam pistons)
Power Source	120 VAC 20 Amp
Weight	34 lb (15.2 kg)

CAT. NO.	UPC NO.	DESCRIPTION
591	783310324324	Portable Blower Power Fishing System
<b>A</b> 618	783310165170	Piston for 5" Conduit
<b>A</b> 619	783310169512	Piston for 6" Conduit
<b>A</b> 16646	783310166467	Adapter for 5" – 6" conduit

\*See next page for parts list.



## Mighty Mouser® Blow Gun Kit

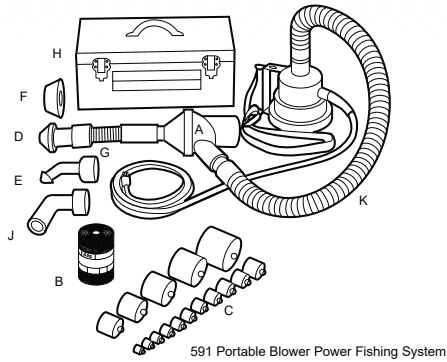
- This compact, self-contained Lexan® thermoplastic blow gun holds a 2,150' (655 m) package of 85 lb (378 N) breaking strength fish line
- Compact self-contained unit leaves one hand free for more efficient operation
- Mighty Mouser® Blow Gun and Accessories all fit into a compact sturdy metal case

### SPECIFICATIONS

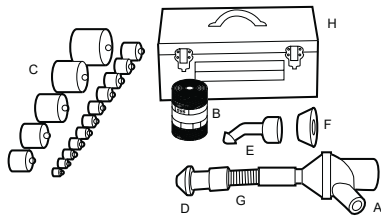
Capacity	1/2"- 4" conduit, through 6" with additional optional accessories
Power Source	Use with blower power fishing systems
Weight	592: 20 lb (9 kg) 691: 1.7 lb (0.8 kg)

CAT. NO.	UPC NO.	DESCRIPTION
592	783310325659	Mighty Mouser® Blow Gun Kit for 1/2" – 4" Conduit in metal box
<b>R</b> 691	783310320951	Mighty Mouser Blow Gun (only)
<b>A</b> 595	783310324331	Fish Line – 85 lb (378 N) pulling strength; 2,150' (655 m) long
<b>A</b> 618	783310165170	Piston for 5" Conduit
<b>A</b> 619	783310169512	Piston for 6" Conduit
<b>A</b> 16646	783310166467	Adapter for 5" – 6" conduit





591 Portable Blower Power Fishing System



592 Mighty Mouser® Blow Gun Kit

## Replacement Parts for Mighty Mouser® Models 591/592

KEY	CAT. NO.	UPC NO.	DESCRIPTION	592	591
<b>R</b>	A	691	Mighty Mouser® Blow Gun	X	X
<b>A</b>	B	595	Fish Line – 85 lb (378N) pulling strength; 2,150' (655 m) long	X	X
<b>A</b>	C	24779	Piston set for 1/2"-4" conduit (EMT & Rigid)	–	–
<b>A</b>	D	25644	Adapter Cone 1-1/4"-2-1/2" Conduit	X	X
<b>A</b>	E	25646	Adapter Cone 1/2"-1" Conduit	X	X
<b>A</b>	F	25645	Adapter Cone 3"-4" Conduit	–	X
<b>R</b>	G	32104	Flexible Hose 1-1/2" dia. x 1' (38.1 mm x 305 mm)	X	X
<b>R</b>	H	32662	Storage Box	X	X
<b>R</b>	J	23360	Adapter Nozzle for Tape and Line	–	X
<b>R</b>	K	32431	Flexible Hose 1-1/2" x 4' (38.1 mm x 1.2 m)	–	X

## Conduit Pistons

- Use with power fishing systems to pull line through a conduit run quickly
- Flexible foam body clears out water and debris from conduit while creating an air-tight seal
- Color-coded end disk with embossed size markings for fast, easy selection
- Strong steel center rod with loops on both ends
- Pistons available for all types and sizes of conduit 1/2" through 6"



S2613

### PISTON SETS

CAT. NO.	UPC NO.	DESCRIPTION
S2613	783310267775	1/2", 3/4", 1", 1-1/4", 1-1/2" and 2" EMT, IMC and Rigid
24779	783310247791	Piston set for 1/2"-4" conduit (EMT & Rigid)
34317	783310343172	2-1/2", 3", 3-1/2" and 4" EMT

### INDIVIDUAL PISTONS

CAT. NO.	UPC NO.	QTY	CONDUIT SIZE	CONDUIT TYPE	COLOR
608-5	783310082637	5	1/2"	All	Green
608	783310110385	1	1/2"	All	Green
609-5	783310082644	5	3/4"	All	Green
609	783310110392	1	3/4"	All	Green
610-5	783310082651	5	1'	All	Green
610	783310110408	1	1'	All	Green
611-3	783310082668	3	1-1/4"	All	Green
611	783310110415	1	1-1/4"	All	Green
612-2	783310082675	2	1-1/2"	All	Green
612	783310110422	1	1-1/2"	All	Green
613	783310165118	1	2"	All	Green
614	783310165125	1	2-1/2"	IMC, Rigid	Green
621	783310191070	1	2-1/2"	EMT	Yellow
615	783310165132	1	3"	IMC, Rigid	Green
622	783310191094	1	3"	EMT	Yellow
616	783310165149	1	3-1/2"	IMC, Rigid	Green
646	783310243267	1	3-1/2"	EMT	Yellow
617	783310165156	1	4"	IMC, Rigid	Green
623	783310191100	1	4"	EMT	Yellow
618	783310165170	1	5"	All	Green
619	783310169512	1	6"	All	Green

## FISH LINE



595

### Lightweight Fish Line

- Strong, lightweight nylon
- Specially wound to payout fast from outside without tangles
- Mildew-resistant, can be pulled into the run with the wire to provide a means to add wires later
- 595 is designed to be used with the Mighty Mouser® blow gun

CAT. NO.	UPC NO.	STRENGTH		LENGTH	
		LB	N	FT	M
595	783310324331	85	378	2150	655
604	783310233688	85	378	2200	670
605	783310165040	45	200	2750	838
606	783310165057	72	320	1700	517
607	783310165064	90	400	1350	411



430

430-500 Poly Line

### Poly Line

- Pre-punched lid with resalable cap allows use directly from container
- Use with power fishing systems directly from the container
- Rot and mildew resistant line reduces tangling when dispensing
- Handy reusable plastic dispenser pail with handle keeps the line dry
- Use to pull rope through conduit

CAT. NO.	UPC NO.	TRACER COLOR	STRENGTH		LENGTH	
			LB	N	FT	M
430	783310214816	Green	210	934	6500	1981
430-500	783310125983	Green	210	934	500	152
431	783310214823	Yellow	240	1067	5200	1585
37959	783310379591	–	500	2224	2200	670



435 Measuring Tape shown on  
434 Dispenser – sold separately

### Polyester Measuring Tape and Dispenser

- Fish and measure conduit runs in one operation
- Permanently printed measurements every foot from zero to 3000' (914 m)
- Made of strong, waterproof polyester
- Pay-out dispenser has anti-skid pads, handle and built-in cutter

#### SPECIFICATIONS

Size	3000' (914 m)
Capacity	170 lb (756 kN) average breaking strength
Weight	435: 4.4 lb (2.0 kg), 434: 3.5 lb (1.6 kg)

CAT. NO.	UPC NO.	DESCRIPTION
435	783310215622	Conduit Measuring Tape 3/16" x 3000' (4.8 mm x 914 m)
434	783310218753	Pay-Out Dispenser for 435 Conduit Measuring Tape

### High-Strength Conduit Measuring Tape



39245

- Pull small cables or install pull rope for large cable pulling jobs
- Made of Polyaramid (similar to Kevlar®), will not rot or deteriorate and can be left in ducts indefinitely for future use
- Low stretch properties make measurements accurate
- Printed measurements everyfoot from zero to 3000' (914 m)
- Use 406 Dispenser (see page 513)

SPECIFICATIONS

	39243G	39244	39245G
Average Breaking Strength	1250 lb (5.56 kN)	1800 lb (8.01 kN)	2500 lb (11.12 kN)
Length	3000' (914 m)	3000' (914 m)	3000' (914 m)
Weight	10.5 lb (4.8 kg)	14.5 lb (6.6 kg)	18 lb (8.2 kg)

CAT. NO.	UPC NO.	DESCRIPTION
39243G	783310392439	Conduit Measuring Tape 1/4" x 3000' (6.4 mm x 914 m)
39244	783310392446	Conduit Measuring Tape 3/8" x 3000' (9.5 mm x 914 m)
39245G	783310392453	Conduit Measuring Tape 1/2" x 3000' (12.7 mm x 914 m)

### High-Strength, Low-Friction Conduit Measuring Tape



4436

- Durable and stretch-resistant tape for easily pulling and installing wire and fiber optic cables within PVC and HDPE ducts
- Factory-lubricated to reduce burn-through in inner duct
- Easy-to-read footage markings for quick and accurate measurements
- Available in various tensile strengths for use in any application

SPECIFICATIONS

	4435	4436	4437
Average Breaking Strength	1250 lb (5.56 kN)	1800 lb (8.01 kN)	2500 lb (11.12 kN)
Length	3000' (914 m)	3000' (914 m)	3000' (914 m)
Weight	23.6 lb (10.7 kg)	31.2 lb (14.2 kg)	39.4 lb (17.9 kg)



CAT. NO.	UPC NO.	DESCRIPTION
4435	783310104452	Polyester Measure/Pulling Tape 1/2" x 3,000' (12.7 mm x 914 m)
4436	783310104469	Polyester Measure/Pulling Tape 5/8" x 3,000' (15.9 mm x 914 m)
4437	783310104476	Polyester Measure/Pulling Tape 3/4" x 3,000' (19.1 mm x 914 m)

Kevlar is a registered trademark of E. I. DuPont, Inc.  
Lexan is a registered trademark of SABIC Innovative Plastics IP B.V.





#sipacificoindustrial



## Servicios Industriales DEL PACÍFICO

---

ALIADO ESTRATEGICO DE LA INDUSTRIA

Teléfono +52 (664) 975 · 6337

Correo [contacto@sipacifico.com.mx](mailto:contacto@sipacifico.com.mx)

Dirección  
Ciruelo s/n, Col. Granja Santa Cecilia C.P. 21386  
Mexicali Baja California