



Servicios Industriales
DEL PACÍFICO

CATÁLOGO
2023





TABLE OF CONTENTS

- Hand Tools | 6 – 53
- Knockouts | 54 – 103
- Power Tool Accessories | 104 – 133
 - Cutting | 134 – 147
 - Bending | 148 – 185
 - Fishing | 186 – 199
 - Cable Pulling | 200 – 239
- Wire & Cable Termination | 240 – 367
 - Test & Measurement | 368 – 491
- Storage & Material Handling | 492 – 521



BENDING

Save money with every bend using Greenlee benders. Trust Greenlee as the industry standard for bending stubs, offsets, saddles, U-bends in EMT, IMC, Rigid and PVC coated conduit.

CONTENTS

Electric Benders	153
Accessory Shoe Groups	158
Hydraulic Benders	161
Hydraulic Pumps	172
Hand Benders	176
Mechanical Benders	178
PVC Heaters & Blankets	180
PVC Accessories.....	183
Bender Accessories	183

BENDING- SELECTION GUIDE

RIGID	PG. NO.	1/2"	3/4"	1"	1-1/4"	1-1/2"	2"	2-1/2"	3"	3-1/2"	4"	5"	6"
Electric Benders	153												
Hydraulic Benders	161												
Hand Benders	176												
Mechanical Benders	178												

EMT	PG. NO.	1/2"	3/4"	1"	1-1/4"	1-1/2"	2"	2-1/2"	3"	3-1/2"	4"	5"	6"
Electric Benders	153												
Hydraulic Benders	161												
Hand Benders	176												
Mechanical Benders	178												

IMC	PG. NO.	1/2"	3/4"	1"	1-1/4"	1-1/2"	2"	2-1/2"	3"	3-1/2"	4"	5"	6"
Electric Benders	153												
Hydraulic Benders	161												
Hand Benders	176												
Mechanical Benders	178												

PVC COATED RIGID	PG. NO.	1/2"	3/4"	1"	1-1/4"	1-1/2"	2"	2-1/2"	3"	3-1/2"	4"	5"	6"
Electric Benders	153												
Hydraulic Benders	161												

PVC CONDUIT	PG. NO.	1/2"	3/4"	1"	1-1/4"	1-1/2"	2"	2-1/2"	3"	3-1/2"	4"	5"	6"
PVC Heaters & Blankets	180												

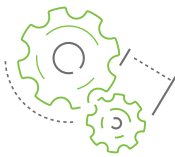
*1818, 1818R, 555C, 555CX, 555DX can also bend Stainless Steel Rigid conduit in the same size conduit ranges as steel Rigid conduit using the Rigid shoe group.
 †For Stainless Steel EMT conduit bending 855GX can bend 1"-2"; 555C, 555CX, 555DX can bend 1/2", 3/4" & 1-1/2"; and 1818 & 1818T can bend 3/4" & 1" with respective EMT shoe groups.

BENDWORKS®

IT JUST KEEPS GETTING EASIER.

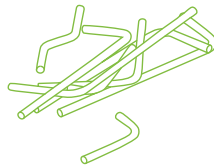
UP TO
40%

Improved Fabrication
Productivity



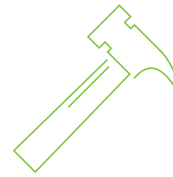
UP TO
35%

Reduction in Scrap



UP TO
80%

Less Rework



Benefits Include:

Error Checking

Verifies design against conduit bending rules and the Greenlee bender-specific parameters

Material Optimization

Optimizes conduit runs for fewest cuts and segments

Waste Reduction

Reduces the conduit bone pile and workflow inefficiencies

Bill of Material Accuracy

Provides output files of required conduit length and removes guesswork from conduit bill of material

Quality Control and Assurance

Retains run information automatically during changes

Details output of conduit segments with unique identification for traceability on the jobsite

Automated Calculations for Bending Operator

Greenlee bender-specific output files provide bending instructions and reduce operator error

Fully Integrated with Autodesk® Revit® and Revit® MEP

Supports collaboration between multiple design users, and allowing for compatibility back and forth between Autodesk® Revit® and BendWorks™



BendWorks® FREE 30-DAY TRIAL

Download your free trial at Autodesk® App Store
apps.exchange.autodesk.com

For more information, view BendWorks® videos at:
BendingRevolution.com



ELECTRIC BENDERS – SELECTION GUIDE



MODEL	855GX	854DX	555°CX	555°C
Weight	532 lb	550 lb	300 lb (Bender Only)	260 lb (Bender Only)
# Of Shoes Needed To Bend Rigid/IMC/EMT	ALL-IN-1	ALL-IN-1	2	2
UL Listed	X	X	X	X
1/2" – 2" Capacity	3/4" - 2" Rigid 1"-2" IMC/EMT	X	X	X
Horizontal Orientation	X	X	X *may lay on backside	X *may lay on backside
Vertical Orientation	X	X	X	X
Solid State Electronics	X	X	X	–
Improved Frame Rigidity	X	X	X	–
Digital Readout	X	X	–	–
Digital Angle Selection	X	X	–	–
Auto Spring Back Adjustment	X	–	–	–
Auto Conduit Selection	X	–	–	–
USB Port	X	–	–	–
Complete Programmability	X	–	–	–
Accessory - Shotgun Shoe	–	X	X	X
Accessory - PVC Coated Shoe	X	X	X	X
Compatible with Bendworks® TXT File	X	X	X	X
Compatible with Bendworks® CSVFile	X	–	–	–

855GX INTELLIBENDER®

GREENLEE'S MOST ADVANCED PROGRAMMABLE BENDER

Capacity

1 shoe bends 3/4" to 2" Rigid,
1" to 2" EMI/IMC

Simple

Ready to bend in 2 steps:
orient shoes and select
angle to bend

Accurate

Absolute encoder stops bending
at exact angles, no guesswork
involved. Digital pendant sets
angle and monitors process

Reliable

Solid state electronics decreases
down time, rated for 1,000,000+ bends



855GX

Productive

4X faster setup¹



855GX BENDING RADII

Conduit Size	Conduit Type	Inches	mm
1"	EMT	7	177.8
1-1/4"	EMT	8-13/16	223.8
1-1/2"	EMT	8-3/8	212.7
2"	EMT	9-1/4	235.0
3/4"	Rigid ⁴	6-13/16	173.0
1"	IMC/Rigid	6-15/16	176.2
1-1/4"	IMC/Rigid	8-3/16	208.0
1-1/2"	IMC/Rigid	8-1/4	209.6
2"	IMC/Rigid	9	228.6
1/2"	PVC Coated	4-1/2	108.0
3/4"	PVC Coated	5-7/16	138.1
1"	PVC Coated	6-15/16	176.2
1-1/4"	PVC Coated	8-3/4	222.3
1-1/2"	PVC Coated	8-1/4	209.6
2"	PVC Coated	9	228.6

SPECIFICATIONS

Capacity	3/4" – 2" Rigid 1" – 2" EMT/IMC 1/2" – 2" PVC Coated
Power Source	120 VAC, 20 AMP GFCI-Protected Receptacle
Weight	532 lb (214 kg)

CAT. NO.	UPC NO.	DESCRIPTION
855GX	783310125792	Bender, Electric Conduit – Programmable (120 VAC, 20A)
A 12582	783310125822	Shoe Group, 1/2" – 2" PVC Coated Rigid (855GX)

¹Speed claims based on timed 4-bend saddle comparisons between the 855GX and similar benders. Using 1" IMC/Rigid groove to bend 3/4" Rigid

854DX

ELECTRIC BENDER

Capacity

1 shoe bends 1/2" to 2" EMT, IMC, and Rigid conduit

Accurate

Absolute encoder stops bending at exact angles, no guesswork involved. Digital pendant sets angle and monitors process

Easy to Use

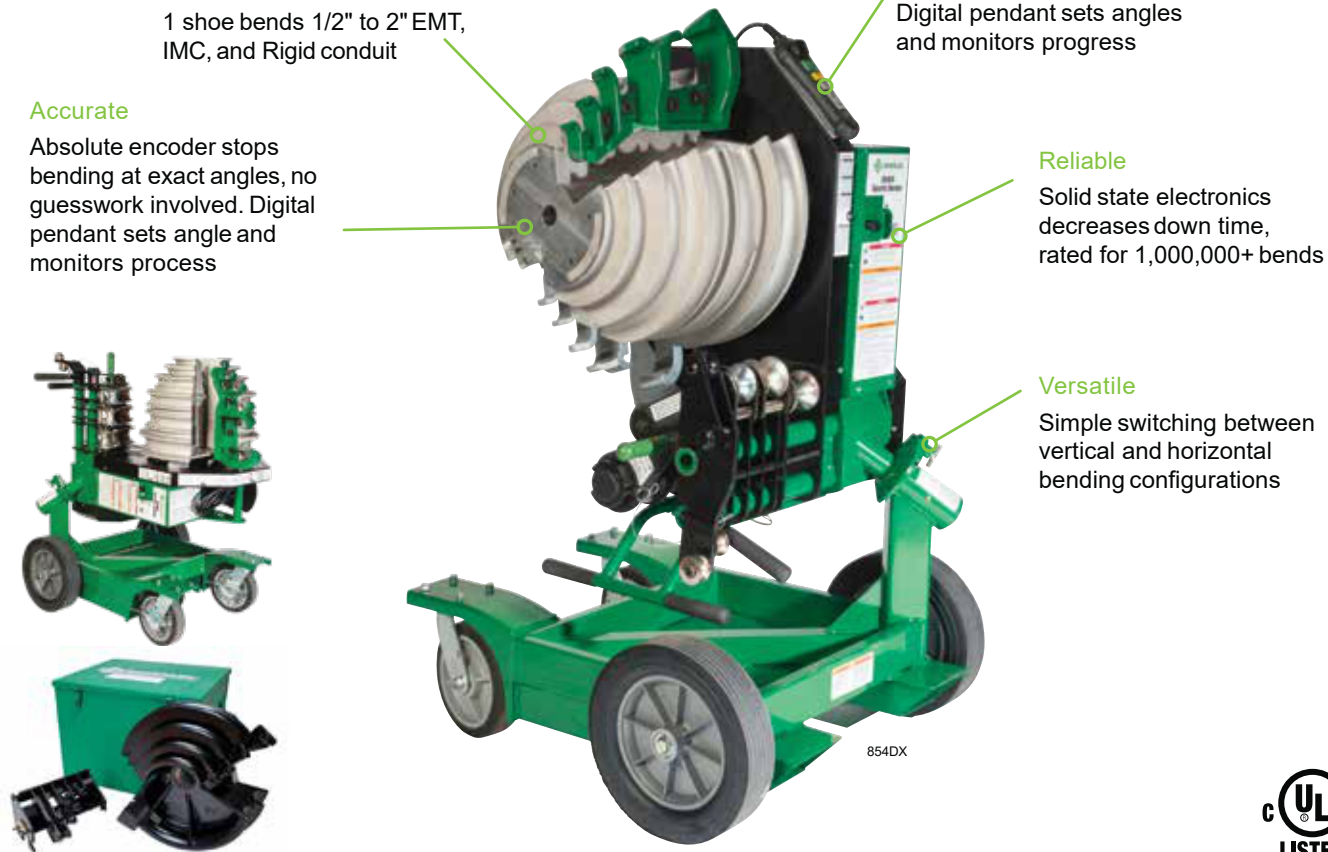
Digital pendant sets angles and monitors progress

Reliable

Solid state electronics decreases down time, rated for 1,000,000+ bends

Versatile

Simple switching between vertical and horizontal bending configurations



854DX BENDING RADII

Conduit Size	Conduit Type	Inches	mm
1/2"	EMT	4-5/16	109.5
3/4"	EMT	5-1/2	139.7
1"	EMT	7	177.8
1-1/4"	EMT	8-1/4	209.6
1-1/2"	EMT	8-3/8	212.7
2"	EMT	9-1/4	235.0
1/2"	IMC/Rigid	4-1/4	108.0
3/4"	IMC/Rigid	5-7/16	138.1
1"	IMC/Rigid	6-15/16	176.2
1-1/4"	IMC/Rigid	8-3/16	208.0
1-1/2"	IMC/Rigid	8-1/4	209.6
2"	IMC/Rigid	9	228.6
1/2"	PVC Coated	4-1/4	108.0
3/4"	PVC Coated	5-7/16	138.1
1"	PVC Coated	6-15/16	176.2
1-1/4"	PVC Coated	8-3/4	222.3
1-1/2"	PVC Coated	8-1/4	209.6
2"	PVC Coated	9	228.6

SPECIFICATIONS

Capacity	1/2" – 2" Rigid / EMT/ IMC / PVC Coated
Power Source	120 VAC, 20 AMP GFCI
Weight	550 lb (250 kg)

CAT. NO.	UPC NO.	DESCRIPTION
854DX	783310026709	854DX Electric Bender
A 02840	783310028406	Shoe Group, PVC Rigid 1/2" – 2" (854DX)
A SG4-854	783310040347	Shotgun Shoe for 854DX

555® CLASSIC

ELECTRIC BENDER

Reliable

Greenlee's classic "triple-nickel" electric bender features simple relay controls for easy field repairs

Capacity

Bend 1/2" to 2" Rigid/IMC/EMT on 2 shoes

Mobility

Lightweight, compact design for easy jobsite portability



555C



555C BENDING RADII

Conduit Size	Conduit Type	Inches	mm
1/2"	EMT	4-5/16	109.5
3/4"	EMT	5-1/2	139.7
1"	EMT	7	177.8
1-1/4"	EMT	8-13/16	223.8
1-1/2"	EMT	8-3/8	212.7
2"	EMT	9-1/4	235.0
1/2"	IMC/Rigid	4-1/4	108.0
3/4"	IMC/Rigid	5-7/16	138.1
1"	IMC/Rigid	6-15/16	176.2
1-1/4"	IMC/Rigid	8-3/4	222.3
1-1/2"	IMC/Rigid	8-1/4	209.6
2"	IMC/Rigid	9	228.6
1/2"	PVC Coated	4-1/4	108.0
3/4"	PVC Coated	5-7/16	138.1
1"	PVC Coated	6-15/16	176.2
1-1/4"	PVC Coated	8-3/4	222.3
1-1/2"	PVC Coated	8-1/4	209.6
2"	PVC Coated	9	228.6

SPECIFICATIONS

Capacity	1/2" – 2" Rigid/ EMT/ IMC/ PVC Coated
Power Source	120 VAC, 20 AMP GFCI
Weight	260 lb (Bender Only)

CAT. NO.	UPC NO.	DESCRIPTION
B 555C	783310069003	Classic Electric Bender power unit without bending accessories
555RSC	783310016328	Classic Electric Bender, with 28008 1/2" – 2" Rigid Shoe Group
555ESC	783310016335	Classic Electric Bender, with 23803 1/2" – 2" EMT Shoe Group
A 28008	783310013198	Rigid/IMC Shoe Group, 1/2" to 2" (555 Series)
A 12586	783310013211	40 ml PVC Coated Rigid Shoe Group, 1/2" to 2" (555 Series)
A 23803	783310013228	EMT Shoe Group, 1/2" to 2" (555C)
A 01323	783310013235	1/2" to 2" IMC Roller Support (555C)
A SG4	783310024194	Shotgun Shoe

555[®]CX ELECTRIC BENDER

Capacity
Bend 1/2" to 2" Rigid/
IMC/EMT on 2 shoes



Productive
Decreased down time with
solid state electronics

Reliable
555[®]CX Is a completely
re-engineered 555[®]C with
a more rugged exterior



555CX BENDING RADII

Conduit Size	Conduit Type	Inches	mm
1/2"	EMT	4-5/16	109.5
3/4"	EMT	5-1/2	139.7
1"	EMT	7	177.8
1-1/4"	EMT	8-13/16	223.8
1-1/2"	EMT	8-3/8	212.7
2"	EMT	9-1/4	235.0
1/2"	IMC/Rigid	4-1/4	108.0
3/4"	IMC/Rigid	5-7/16	138.1
1"	IMC/Rigid	6-15/16	176.2
1-1/4"	IMC/Rigid	8-3/4	222.3
1-1/2"	IMC/Rigid	8-1/4	209.6
2"	IMC/Rigid	9	228.6
1/2"	PVC Coated	4-1/4	108.0
3/4"	PVC Coated	5-7/16	138.1
1"	PVC Coated	6-15/16	176.2
1-1/4"	PVC Coated	8-3/4	222.3
1-1/2"	PVC Coated	8-1/4	209.6
2"	PVC Coated	9	228.6

SPECIFICATIONS

Capacity	1/2" – 2" Rigid / EMT/ IMC/ PVC Coated
Power Source	120 VAC, 20 AMP GFCI
Weight	300 lb (Bender Only)

CAT. NO.	UPC NO.	DESCRIPTION
B 555CX	783310124252	Electric Bender, Standard Pendant (120 VAC, 20A)
555CXES	783310016359	Electric Bender, with 13934 1/2" – 2" EMT Shoe Group (120 VAC, 20A)
555CXRS	783310016342	Electric Bender, with 28008 1/2" – 2" Rigid Shoe Group (120 VAC, 20A)
555CX-22	783310027874	Electric Bender, Standard Pendant (220 VAC, 20A)
555CXES-22	783310028635	Electric Bender, with 13934 1/2" – 2" EMT Shoe Group (220 VAC, 20A)
555CXRS-22	783310028628	Electric Bender, with 28008 1/2" – 2" Rigid Shoe Group (220 VAC, 20A)
A 28008	783310013198	Rigid/IMC Shoe Group, 1/2" to 2" (555 Series)
A 13856	783310138563	1-1/2" and 2" IMC Squeeze Roller (555CX/DX) (use with 28008 shoe group)
A 13934	783310013204	EMT Shoe Group, 1/2" to 2" (555CX/DX)
A 12586	783310013211	40 ml PVC Coated Rigid Shoe Group, 1/2" to 2" (555 Series)
A SG4	783310024194	Shotgun Shoe

ACCESSORY SHOE GROUPS

- Bend 1/2" to 2" on one shoe*
- No loose pieces
- One time setup
- Less lifting reduces operator fatigue
- Works with Greenlee® 555CX, 555DX and 555C electric conduit benders

555 SHOE GROUPS

CAT. NO.	UPC NO.	DESCRIPTION	ELECTRIC BENDER COMPATIBILITY	
			555C	555CX/555DX
A 28008	783310013198	Rigid Shoe Group ¹ , 1/2" to 2"	X	X
A 12586	783310013211	PVC-Coated Shoe Group, 1/2" to 2"	X	X
A 13934	783310013204	EMT Shoe Group, 1/2" to 2"	-	X
A 23803	783310013228	EMT Shoe Group, 1/2" to 2"	X	-
A 01323	783310013235	IMC Roller Support, 1-1/2" to 2"	X	-
A 13856	783310138563	IMC Squeeze Roller 1-1/2" - 2"	-	X

The IMC squeeze roller is required when bending IMC for the 555CX/DX
 *Separate shoes for different conduit types required (Rigid/IMC, EMT, and PVC-Coated)



1/2" – 2" 40 MIL PVC-Coated Rigid Shoe Group

KEY	CAT. NO.	UPC NO.	DESCRIPTION
A	12586	783310013211	Shoe Group, 1/2" to 2" PVC Coated Rigid (555 Series)
R	A	02553	1/2" to 2" Bending Shoe
R	B	02554	1/2" to 2" Roller Support
	1723	783310238188	Metal Storage Box
	12582	783310125822	Shoe Group, 1/2" – 2" PVC Coated Rigid (855GX)
	02840	783310028406	Shoe Group, 1/2" – 2" PVC Coated Rigid (854DX)



1/2" – 2" Rigid/IMC Shoe Group

KEY	CAT. NO.	UPC NO.	DESCRIPTION
A	28008	783310013198	Rigid/IMC Shoe Group, 1/2" to 2"
R	A	02548	1/2" to 2" Bending Shoe
R	B	02549	1/2" to 2" Roller Support
	1723	783310238188	Metal Storage Box

CAT. NO.	UPC NO.	DESCRIPTION
A 01323	783310013235	1/2" to 2" IMC Roller Support (555C)
A 13856	783310138563	1-1/2" and 2" IMC Squeeze Roller (555CX/DX)

The IMC Roller Support is required to bend IMC on the 555C Bender.
 The IMC Squeeze Roller is required to bend IMC on 555CX/DX Benders.

1/2" – 2" EMT Shoe Groups



KEY	CAT. NO.	UPC NO.	DESCRIPTION
A	13934	783310013204	EMT Shoe Group, 1/2" to 2" (555CX/DX)
R	A	02543	1/2" to 2" Bending Shoe
R	B	02567	1/2" to 2" Roller Support
R	C	13857	1-1/2" and 2" EMT Squeeze Roller
	1723	783310238188	Metal Storage Box



KEY	CAT. NO.	UPC NO.	DESCRIPTION
A	23803	783310013228	EMT Shoe Group, 1/2" to 2" (555C)
R	A	02543	1/2" to 2" Bending Shoe
R	B	02544	1/2" to 2" Roller Support
	1723	783310238188	Metal Storage Box

Shotgun Shoe for 555® Benders

- Works with Greenlee 555 Series electric benders
- Adjust length indicator to set different heights for stubs and kicks
- Up to 2X faster bend cycle time – Pays for itself in less than 1 year*

SHOTGUN SHOE BENDING RADII

Conduit Size	Conduit Type	Inches	mm
3/4"	EMT	5	127.0
1"	EMT	6-1/4	158.8
1/2"	IMC/Rigid	5	127.0
3/4"	IMC/Rigid	6-1/4	158.8
1"	IMC/Rigid	5-3/4	146.0



KEY	CAT. NO.	UPC NO.	DESCRIPTION
A	SG4	783310024194	Shotgun Shoe for 555 Series
A	02466	783310024668	Bending Shoe
B	02467	783310024675	Roller Support Unit
C	02465	783310024651	Hook Assembly
D	02582	783310025825	Length Indicator (includes long & short clamp)
	1723	783310238188	Metal Storage Box

* Based on an estimated labor rate (\$100/hr) and conduit usage

Shotgun Shoe for 854DX Benders

- Works with Greenlee's 854DX Electric Bender
- Adjust length indicator to set different heights for stubs and kicks
- Up to 2X faster bend cycle time – pays for itself in less than 1 year*



04030
Adapter Kit

SHOTGUN SHOE BENDING RADII

Conduit Size	Conduit Type	Inches	mm
3/4"	EMT	5	127.0
1"	EMT	6-1/4	158.8
1/2"	IMC/Rigid	5	127.0
3/4"	IMC/Rigid	6-1/4	158.8
1"	IMC/Rigid	5-3/4	146.0

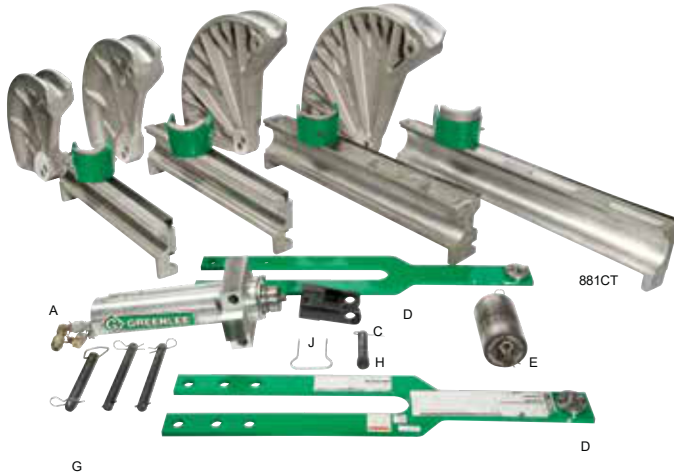
KEY	CAT. NO.	UPC NO.	DESCRIPTION	
A	SG4-854	783310040347	Shotgun Shoe for 854DX	
R	A	04027	783310040279	Bending Shoe
R	B	04028	783310040286	Roller Support Unit
R	C	02465	783310024651	Hook Assembly
R	D	04029	783310040293	Length Indicator (Includes long & short clamp)
	1723	783310238188	Metal Storage Box	
	04030	783310040309	Adapter Kit (Includes Roller Support, Length Indicator, and mounting hardware)	

* Based on an estimated labor rate (\$100/hr) and conduit usage

HYDRAULIC BENDERS

Cam-Track® Conduit Benders for 2-1/2" to 4" EMT, IMC and Rigid

- One bender to bend EMT, IMC and Rigid Conduit
- Fast and easy setup on the job site
- True One-Shot90° bends with CT models for quick accurate bends.
- Steel reinforced follow bars for long life
- Bend a 90° elbow in 4" Rigid conduit in 95 seconds



SPECIFICATIONS

Capacity	2-1/2" – 4" EMT, IMC and Rigid
Power Source	980: 120 VAC Electric Powered Hydraulic Pump 980-22PS: 220 VAC 50/60 Cycle Electric Powered Hydraulic Pump
Weight	881MBT: 300 lb (136 kg) 881CTE980: 1026 lb (465 kg) 881CTDE980: 999 lb (454 kg)

NOTE: See next page for parts associated with the Cam Track®

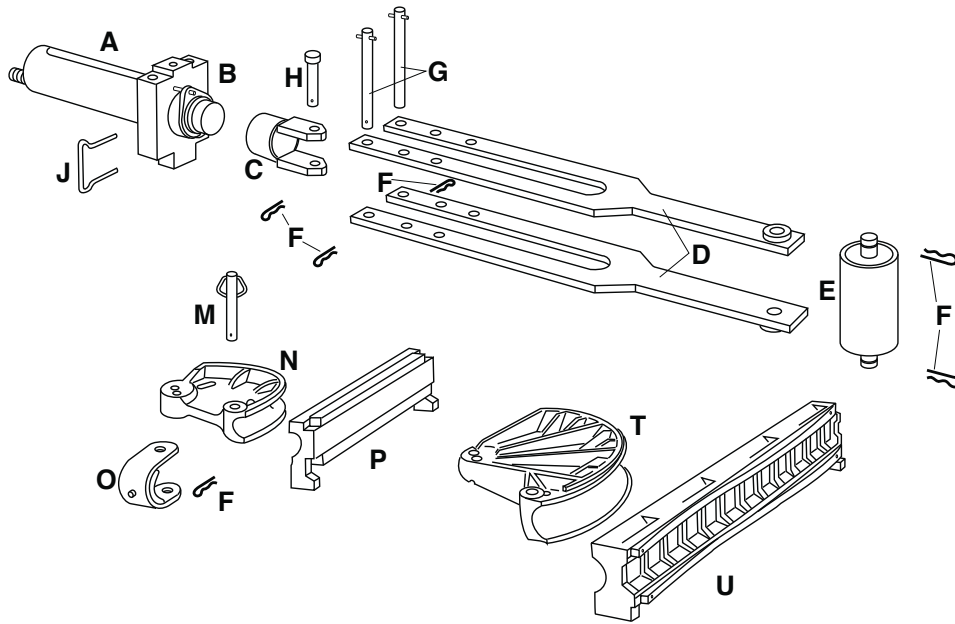
881CT, 881CTD, 881BASIC

Size	Center Line Radius	Shoe Group	Degree of Bend
2-1/2"	13-1/2" (342.9 mm)	27554	90
3"	16" (406.4 mm)	27555	90
3-1/2"	18-5/8" (473.1 mm)	31281	90
4"	20-7/8" (530.2 mm)	31274	90



CAT. NO.	UPC NO.	DESCRIPTION
881CT	783310312871	Cam Track Conduit Bender for One-Shot 90° Bends in 2-1/2", 3", 3-1/2" and 4" EMT, IMC and Rigid conduit, without hydraulic pump
881CTE980	783310342083	Cam Track Conduit Bender for One-Shot 90° Bends in 2-1/2", 3", 3-1/2" and 4" EMT, IMC and Rigid conduit, with 980 Electric Hydraulic Pump
N 881CTE980-MBT	783310043577	Cam Track Conduit Bender for One-Shot 90° Bends in 2-1/2", 3", 3-1/2" and 4" EMT, IMC and Rigid conduit, with 980 Electric Hydraulic Pump with Mobile bending table
881CTD	783310384663	Cam Track Conduit Bender for One-Shot 90° Bends in 2-1/2", 3" and 4" EMT, IMC and Rigid conduit, without hydraulic pump & 3-1/2" shoe group
881CTDE980	783310384670	Cam Track Conduit Bender for One-Shot 90° Bends in 2-1/2", 3" and 4" EMT, IMC and Rigid conduit, with 980 Electric Hydraulic Pump, without 3-1/2" shoe group
A 27554	783310275541	2-1/2" – One-Shot 90° EMT, IMC, Rigid Shoe Group
A 27555	783310275558	3" – One-Shot 90° EMT, IMC, Rigid Shoe Group
A 31281	783310312819	3-1/2" – One-Shot 90° EMT, IMC, Rigid Shoe Group
A 31274	783310312741	4" – One-Shot 90° EMT, IMC, Rigid Shoe Group

Cam-Track® Benders and Shoe Groups



KEY	CAT. NO.	UPC NO.	DESCRIPTION	BENDERS		SHOE GROUPS			
				881CT	881CTD	27554	27555	31281	31274
A	27416	783310274162	40-Ton Hydraulic Ram with 4018GB female quick coupler. The ram includes Keys B, G, and two clips from Key F	1	1	-	-	-	-
B	27417	783310274179	Cylinder Block	1	1	-	-	-	-
C	30309	783310303091	Yoke	1	1	-	-	-	-
D	26309	783310263098	Connecting Bar Unit	2	2	-	-	-	-
E	27364	783310273646	Roller Unit	1	1	-	-	-	-
F	2725AA	783310503026	Hitch Pin Clips (10 pack)	6	6	-	-	-	-
G	27381	783310273813	Cylinder Block Pin Unit	2	2	-	-	-	-
H	26306	783310263067	Yoke Pin	1	1	-	-	-	-
J	26349	783310263494	Spring Clip (secures Yoke Unit to Ram)	1	1	-	-	-	-
	11289	783310112891	3/8" x 6' (9.5 x 1829 mm) Hydraulic Hose with two 4033GB male quick couplers (not shown)	1	1	-	-	-	-
M	26624	783310266242	Saddle Pin Unit – includes 1 clip from Key F	1	1	-	-	-	-
N	26297	783310262978	2-1/2" Shoe 90°	1	1	1	-	-	-
P	26366	783310263661	2-1/2" Follow Bar 90°	1	1	1	-	-	-
O	26580	783310265801	2-1/2" Saddle	1	1	1	-	-	-
N	26300	783310263005	3" Shoe 90°	1	1	-	1	-	-
P	35400	783310354000	3" Follow Bar 90°	1	1	-	1	-	-
O	26584	783310265849	3" Saddle	1	1	-	1	-	-
O	26588	783310265887	3-1/2" Saddle	1	-	-	-	1	-
T	31882	783310318828	3-1/2" Shoe 90°	1	-	-	-	1	-
U	31881	783310318811	3-1/2" Follow Bar 90°	1	-	-	-	1	-
O	26594	783310265948	4" Saddle	1	1	-	-	-	1
T	31884	783310318842	4" Shoe 90°	1	1	-	-	-	1
U	31883	783310318835	4" Follow Bar 90°	1	1	-	-	-	1
	2460	783310233633	Steel Storage Box (not shown)	1	1	-	-	-	-
	696	783310153412	Caster Set (not shown)	1	1	-	-	-	-

881-MBT

MOBILE BENDING TABLE & CAM-TRACK® CONDUIT BENDERS

Ergonomic

Conduit bending at waist height for operator comfort
 On-board storage minimizes repetitive lifting of bender components helping reduce back strain and fatigue

Storage

All components pin to the table, reducing component loss allowing convenient transport from site to site



881-MBT

Mobility

Save one hour with every move
 Fits through standard height doors 36" wide

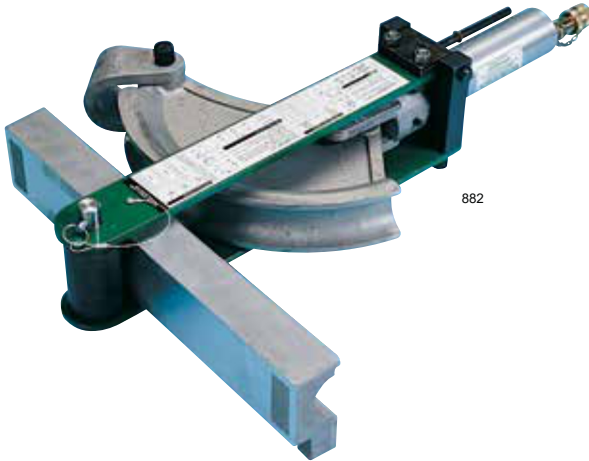
SPECIFICATIONS

Weight	300 lb (136 kg)
Weight Of Table With	All Components – 1326 lb (601.5 kg)
Length Of Table	67" (1.7 m)
Overall Height	With Pump – 41" (1.04 m) Without Pump – 35" (0.89 m)
Overall Width	31 1/2" (0.8 m)

CAT. NO.	UPC NO.	DESCRIPTION
881-MBT	783310009030	Mobile Bending Table

Flip-Top® Benders for 1-1/4" - 2" EMT, IMC and Rigid

- Choose 882 for EMT or 882CB models for EMT, IMC and Rigid Conduit
- Simple, accurate and easy to use
- Flip-Top hinged frame top plate opens for easy, fast loading and unloading
- Ram travel scale and charts for accurate bends, offsets and saddles




FLIP-TOP® BENDER CENTERLINE BENDING RADII

882, 882CB, 882CB

Size	EMT	Rigid	IMC
1-1/4"	7-7/32" (183.4 mm)	7-1/4" (184.2 mm)	7-1/4" (184.2 mm)
1-1/2"	8-1/16" (204.8 mm)	8-1/4" (209.5 mm)	8-1/4" (209.5 mm)
2"	9-5/16" (236.5 mm)	8-7/8" (225.4 mm)	8-7/8" (225.4 mm)

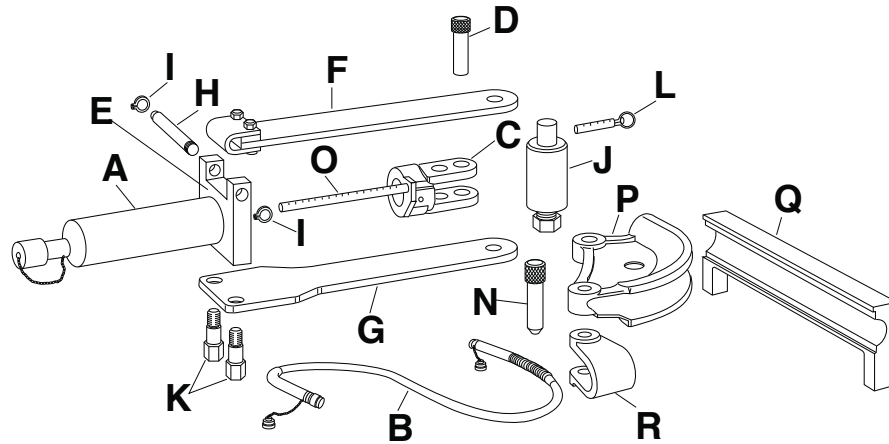
SPECIFICATIONS

Capacity	882: 1-1/4", 1-1/2" and 2" EMT 882CB: 1-1/4", 1-1/2" and 2" EMT, IMC and Rigid
Power Source	755: Hydraulic Hand Pump 975: 120 VAC Electric Hydraulic Pump 976: 22PS-220 VAC 50/60 Cycle Electric Hydraulic Pump
Weight	882: 141 lb (64 kg) 882H755: 161 lb (73 kg) 882CBH755: 217 lb (99 kg) 882CBE975: 264 lb (120 kg) 882E975: 195 lb (89 kg) 882CB: 205 lb (93 kg)

CAT. NO.	UPC NO.	DESCRIPTION
882	783310151289	Flip-Top Bender for 1-1/4", 1-1/2" and 2" EMT Conduit without hydraulic pump
882CB	783310295365	Flip-Top Bender with shoes for 1-1/4", 1-1/2" and 2" EMT, IMC and Rigid Conduit without hydraulic pump
882CBH755	783310295372	Flip-Top Bender with shoes for 1-1/4", 1-1/2" and 2" EMT, IMC and Rigid Conduit with 755 Hand Hydraulic Pump
882CBE975	783310342021	Flip-Top Bender with shoes for 1-1/4", 1-1/2" and 2" EMT, IMC and Rigid Conduit with 975 Electric Hydraulic Pump
882H755	783310164609	Flip-Top Bender for 1-1/4", 1-1/2" and 2" EMT Conduit with 755 Hand Hydraulic Pump
882E975	783310342014	Flip-Top Bender for 1-1/4", 1-1/2" and 2" EMT Conduit with 975 Electric Hydraulic Pump
 882RIG1	783310299486	Conversion Attachment Set – Converts 882 to 882CB by adding the shoes, follow bars and saddles for 1-1/4", 1-1/2" and 2" IMC and Rigid Conduit

NOTE: See next page for parts associated with the Flip-Top® Benders

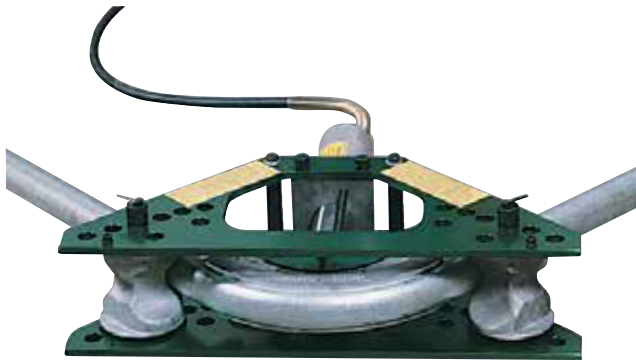
Flip-Top® Benders and Shoe Groups



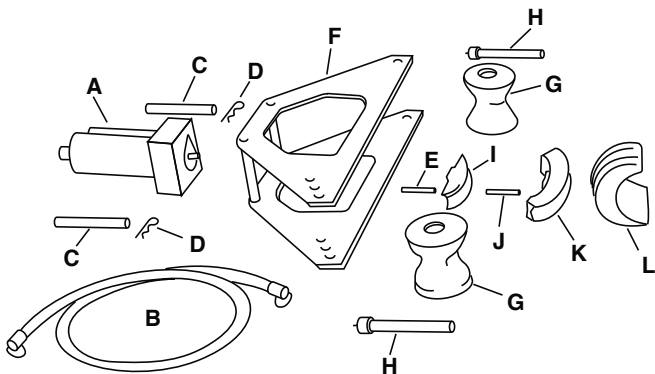
KEY	CAT. NO.	UPC NO.	DESCRIPTION	BENDERS		SHOE GROUP
				882	882CB	882RIG1
A	1738	783310151296	12-Ton Hydraulic Ram with 4018GB female quick Coupler	1	1	–
B	11289	783310112891	3/8" x 6' (9.5 x 1829 mm) Hydraulic Hose with two 4033GB male quick couplers	1	1	–
C	15145	783310151456	Yoke	1	1	–
D	794AV	783310040866	Yoke Pin	1	1	–
E	16563	783310165637	Frame Unit (includes F thru K)	1	1	–
F	15136	783310151364	Upper Connecting Plate Unit	1	1	–
G	15135	783310151357	Lower Connecting Plate Unit	1	1	–
H	15150	783310151500	Hinge Pin	1	1	–
I	50283	783310502838	Retaining Ring	2	2	–
J	38778	783310387787	Roller Unit with pin (L)	1	1	–
K	15147	783310151470	Anchor Stud	2	2	–
L	54303G	783310543039	Hitch Pin, 3/8 x 1-1/2	1	1	1
N	29466G	783310299370	Saddle Pin	1	–	–
O	4090GB	783310508489	Scale Jam Nut	–	–	–
0	52867	783310528678	Scale O-Ring	–	–	–
0	21954	783310219545	Scale Piston	1	1	–
	1531	783310232742	Steel Storage Box (not shown)	1	1	–
P	11146	783310111467	1-1/4" EMT Shoe	1	1	–
Q	11126	783310111269	1-1/4" EMT Follow Bar	1	1	–
R	11075	783310110750	1-1/4" EMT Saddle	1	1	–
P	14287	783310142874	1-1/2" EMT Shoe	1	1	–
Q	11107	783310111078	1-1/2" EMT Follow Bar	1	1	–
R	11072	783310110729	1-1/2" EMT Saddle	1	1	–
P	11132	783310111320	2" EMT Shoe	1	1	–
Q	11089	783310110897	2" EMT Follow Bar	1	1	–
R	14279	783310142799	2" EMT Saddle	1	1	–
P	29474	783310294740	1-1/4" IMC and Rigid Shoe	–	1	1
Q	29477	783310294771	1-1/4" IMC and Rigid Follow Bar	–	1	1
R	29465	783310294658	1-1/4" IMC and Rigid Saddle	–	1	1
P	29470	783310294702	1-1/2" IMC and Rigid Shoe	–	1	1
Q	29472	783310294726	1-1/2" IMC and Rigid Follow Bar	–	1	1
R	29464	783310294641	1-1/2" IMC and Rigid Saddle	–	1	1
P	29466G	783310294665	2" IMC and Rigid Shoe	–	1	1
Q	29468G	783310294689	2" IMC and Rigid Follow Bar	–	1	1
R	29463G	783310294634	2" IMC and Rigid Saddle	–	1	1

Rigid Conduit Bender for 1-1/4" – 2" One-Shot 90°s and 2-1/2" – 4" Segment Bending

- Strong, portable pin-assembled aluminum components
- Easy-to-use ram travel scale and bending charts
- Conduit supports index to suit all sizes



777



CENTERLINE BENDING RADII FOR 777 BENDERS

Rigid Shoe Size	1-1/4"	1-1/2"	2"	2-1/2"	3"	3-1/2"	4"
Bending Radius-Inches	7-1/4"	8-1/4"	9-1/2"	11-7/16"	13-3/4"	16"	18-1/4"
Bending Radius-mm	184.1	209.5	241.3	290.5	349.3	406.4	463.6

SPECIFICATIONS

Capacity	1-1/4" – 4" Rigid Conduit
Power Source	755: Hydraulic Hand Pump 975: 120 VAC Electric Hydraulic Pump 980: 120 VAC Electric Hydraulic Pump
Weight	777: 164 lb (75 kg) 777HC755: 145 lb (79 kg) 777E975: 176 lb (231 kg)

KEY	CAT. NO.	UPC NO.	DESCRIPTION	777
A	1736	783310132516	27-Ton Hydraulic Ram with 4018GB female quick coupler, includes Keys C thru E	1
B	11289	783310112891	3/8" x 6' (9.5 x 1829 mm) Hose with two 4033GB male quick couplers	1
C	13252	783310132523	Cylinder Head Pin Unit with Spring Clip 2725AA (Key D)	2
D	2725AA	783310503026	Spring Clip	2
E	10826	783310108269	Ram Pin	1
F	13232	783310132325	Frame Unit	1
G	13193G	783310131939	Conduit Support	2
H	13230	783310144960	Conduit Support Pin	2
I	10939	783310109396	Small Shoe Support 1/2" thru 2"	1
J	10826	783310108269	Shoe Pin	1
K	90° ALUMINUM BENDING SHOES			
	10920	783310109204	1-1/4" Shoe	1
	10921	783310109211	1-1/2" Shoe	1
	10922	783310109228	2" Shoe	1
L	ALUMINUM SEGMENT BENDING SHOES			
	13208G	783310132080	2-1/2" Shoe	1
	13209	783310132097	3" Shoe	1
	13210	783310132103	3-1/2" Shoe	1
	13211	783310132110	4" Shoe	1
	13382	783310133827	Steel Storage Box (not shown)	1

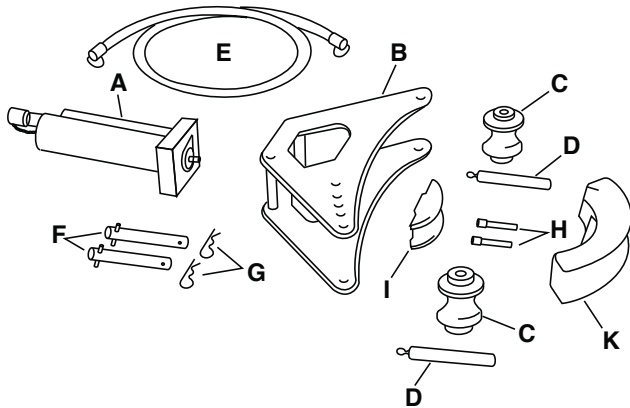
CAT. NO.	UPC NO.	DESCRIPTION
777	783310164913	1-1/4" through 2" One-Shot and 2-1/2" through 4" Segment, Rigid Conduit Bender without hydraulic pump
777HC755	783310164708	1-1/4" through 2" One-Shot and 2-1/2" through 4" Segment, Rigid Conduit Bender with 755 Hand Hydraulic Pump
777E975	783310341987	1-1/4" through 2" One-Shot and 2-1/2" through 4" Segment, Rigid Conduit Bender with 975 Electric Hydraulic Pump
A 1802	783310212577	Bending Table (Optional)
A 21359	783310213598	Conduit Support Pin for use with 1802 Bending Table – (2) Required

Rigid Conduit Bender for 1/2", 3/4", 1", 1-1/4", 1-1/2" and 2"

- Strong, portable pin-assembled aluminum components
- Easy-to-use ram travel scale and bending charts
- Conduit supports index to suit all sizes
- Optional shoes available to bend PVC-Coated Rigid conduit (see page 170)



880



SPECIFICATIONS

Capacity	880: 1" – 2" Rigid Conduit
Power Source	755: Hydraulic Hand Pump 975: 120 VAC Electric Hydraulic Pump 980: 120 VAC Electric Hydraulic Pump
Weight	880: 113 lb (52 kg) 880H755: 135 lb (61 kg) 880E975: 172 lb (78 kg)

KEY	CAT. NO.	UPC NO.	DESCRIPTION	880
A	747	783310162490	15-Ton Hydraulic Ram with 4018GB female quick coupler, includes Keys F, G and one H	1
B	2345AA	783310033967	Frame Unit	1
C	2349AA	783310034001	Conduit Support	2
D	13679	783310136798	Conduit Support Pin	2
E	11289	783310112891	3/8" x 6' (9.5 x 1829 mm) Hydraulic Hose with two 4033GB male quick couplers	1
F	15829	783310158295	Cylinder Head Pin Unit with Spring Clips 2725AA (Key G)	2
G	2725AA	783310503026	Spring Clips	2
H	10826	783310108269	Ram Pin, Shoe Pin	2
I	10939	783310109396	Shoe Support	1
K	10919	783310109198	1" Shoe – Rigid	1
K	10920	783310109204	1-1/4" Shoe – Rigid	1
K	10921	783310109211	1-1/2" Shoe – Rigid	1
K	10922	783310109228	2" Shoe – Rigid	1
	14909	783310149095	Steel Storage Box (not shown)	1

CENTERLINE BENDING RADII FOR 880 & 880 PVC BENDERS

Rigid Shoe Size	1/2"	3/4"	1"	1-1/4"	1-1/2"	2"
Bending Radius-Inches	4"	4-1/2"	5-3/4"	7-1/4"	8-1/4"	9-1/2"
Bending Radius-cm	10.16	11.43	14.60	18.41	20.95	24.13

CAT. NO.	UPC NO.	DESCRIPTION
880	783310164807	1", 1-1/4", 1-1/2" and 2" Rigid Conduit Bender without hydraulic pump
880H755	783310164647	1", 1-1/4", 1-1/2" and 2" Rigid Conduit Bender with 755 Hand Hydraulic Pump
880E975	783310342007	1", 1-1/4", 1-1/2" and 2" Rigid Conduit Bender with 975 Electric Hydraulic Pump
A 1802	783310212577	Bending Table (Optional)
A 21357	783310213574	Conduit Support Pin for use with 1802 Bending Table – (2) Required
A 10917	783310109174	1/2" Shoe (Optional)
A 10918G	783310109181	3/4" Shoe (Optional)



884


Shown with OPTIONAL 1802 Bending Table & OPTIONAL 980 pump

Rigid Conduit Benders for One-Shot 90°s in 1-1/4" – 4" (5" with Segment Bending Shoe)

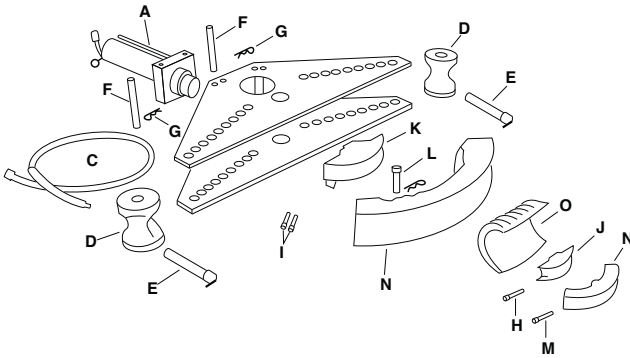
- Strong, yet lightweight, portable, pin-assembled aluminum components
- Easy-to-use ram travel scale and charts for accurate bends
- Make elbows, offsets and saddles
- Both 884 and 885 bend One-Shot 90°s in 1-1/4" – 4" Rigid conduit
- Optional shoes available to bend PVC-Coated Rigid conduit (see page 170)
- Optional 1802 Bending Table available for easier operation

SPECIFICATIONS

Capacity	1884: 1-1/4" – 4" Rigid conduit. 884PVC: 1-1/4" – 4" 40 mil PVC Coated Rigid Conduit 885: 1-1/4" – 5" Rigid Conduit
Power Source	980: 120 VAC Electric Powered Hydraulic Pump 980-22PS: 220 VAC 50/60 Cycle Electric Powered Hydraulic Pump
Weight	884: 421 lb (191 kg) 884E980: 494 lb (225 kg) 884PVC: 388 lb (176 kg) 885: 449 lb (204 kg) 885E980: 527 lb (239 kg)

CAT. NO.	UPC NO.	DESCRIPTION
884	783310164777	1-1/4" through 4" Rigid Conduit Bender, without hydraulic pump
884E980	783310342090	1-1/4" through 4" Rigid Conduit Bender, with 980 Electric Hydraulic Pump
884-PVC	783310336143	1-1/4", 1-1/2", 2", 3" and 4" PVC Coated Rigid Conduit Bender without hydraulic pump
885	783310167518	1-1/4" through 4" One-Shot and 5" Segment Rigid Conduit Bender, without hydraulic pump
885E980	783310342106	1-1/4" through 4" One-Shot and 5" Segment Rigid Conduit Bender, with 980 Electric Hydraulic Pump
 1802	783310212577	Bending Table (optional)

Rigid Conduit Benders for One-Shot 90°s in 1-1/4" – 4" (5" with Segment Bending Shoe)



884 & 885 CENTERLINE BENDING RADII

Size	Rigid	Size	PVC Rigid
1-1/4"	7-1/4" (184.1 mm)	1-1/4"	7-1/4" (184.1 mm)
1-1/2"	8-1/4" (209.5 mm)	1-1/2"	8-1/4" (209.5 mm)
2"	9-1/2" (241.3 mm)	2"	9-1/2" (241.3 mm)
2-1/2"	12-1/2" (317.5 mm)	2-1/2"	11-7/16" (290.5 mm)
3"	15" (381 mm)	3"	13-3/4" (349.3 mm)
3-1/2"	17-1/2" (444.5 mm)	3-1/2"	16" (406.4 mm)
4"	20" (508 mm)	4"	18-1/4" (463.5 mm)
5" (885 only)	25" (635 mm)		

KEY	CAT. NO.	UPC NO.	DESCRIPTION	884	884-PVC	885
A	1737	783310167525	27-Ton Hydraulic Ram with 4018GB female quick coupler, includes Keys F thru I.	1	1	1
C	11289	783310112891	3/8" x 6' (9.5 x 1829 mm) Hydraulic Hose with two 4033GB male quick couplers	1	1	1
D	15671	783310156710	Conduit Support	2	–	2
	33454	783310334545	Conduit Support (not shown)	–	2	–
E	16747	783310167471	Conduit Support pin	2	2	2
F	16753	783310167532	Cylinder Head Pin Unit with Spring Clip 2725AA	2	2	2
G	2725AA	783310503026	Spring Clip	2	2	2
H	25184	783310251842	Ram Pin	1	1	1
I	10946	783310109464	Large Ram Pin	2	2	2
J	10939	783310109396	Small Shoe Support (1/2" through 2")	1	1	1
K	16741	783310167419	Large Shoe Support (2-1/2" through 4")	1	1	1
L	10963	783310109631	Large Shoe Pin	1	1	1
M	10826	783310108269	Small Shoe Pin	1	1	1
	2050	783310198116	Steel Storage Box (not shown)	1	1	1
N	10920	783310109204	1-1/4" Shoe – Rigid	1	–	1
N	10921	783310109211	1-1/2" Shoe – Rigid	1	–	1
N	10922	783310109228	2" Shoe – Rigid	1	–	1
N	10923G	783310109235	2-1/2" Shoe – Rigid	1	–	1
N	10924	783310109242	3" Shoe – Rigid	1	–	1
N	10925	783310109259	3-1/2" Shoe – Rigid	1	–	1
N	14265	783310142652	4" Shoe – 20" centerline radius – Rigid	1	–	1
N	15669	783310156697	5" Shoe – Rigid	–	–	1
O	33459	783310334590	1-1/4" Shoe – PVC	–	1	–
N	33463	783310334637	1-1/2" Shoe – PVC	–	1	–
N	33462G	783310334620	2" Shoe – PVC	–	1	–
N	34340	783310343400	3" Shoe – PVC	–	1	–
N	34344	783310343448	4" Shoe – PVC	–	1	–
N	34329	783310343295	7/8" Wrench (not shown)	–	1	–

NOTE: To complete setup as shown two 10-foot (3.04 m) lengths of 2" Rigid conduit and Bender are required (purchased separately).

BENDERS/ PARTS

CAT. NO.	UPC NO.	DESCRIPTION
884-PVC	783310336143	An 884 Bender with shoes, supports and wrench for bending 1-1/4", 1-1/2", 2", 3" and 4" 40 mil PVC Coated Rigid conduit. In a steel storage box. (See 884 Conduit Bender for details)

Accessories for Bending 40 Mil PVC-Coated Rigid Conduit for 880 and 884 Benders



884PVC

- Special size shoes and supports for bending 40 mil PVC-Coated Rigid conduit
- Two conduit supports accessories are required. Shoes for 1-1/2" or larger have a cam device to force the conduit out of the shoe after bending; this requires a wrench to turn the cam

SHOE UNITS – 40 MIL PVC COATED RIGID

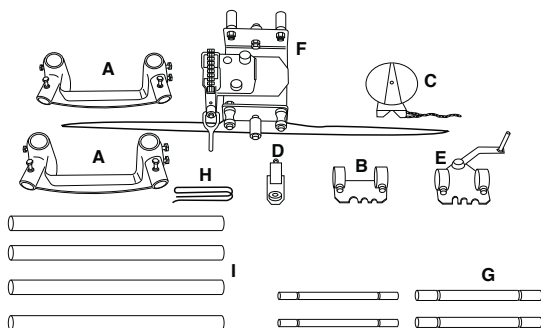
SIZE	CAT. NO.	UPC NO.	DESCRIPTION
1/2"	33456	783310334569	Shoe Unit 4" (101.6 mm) Centerline Radius
3/4"	33457G	783310334576	Shoe Unit 4-1/2" (114.3 mm) Centerline Radius
1"	33458	783310334583	Shoe Unit 5-3/4" (146.1 mm) Centerline Radius
1-1/4"	33459	783310334590	Shoe Unit 7-1/4" (184.2 mm) Centerline Radius
1-1/2"	33463	783310334637	Shoe Unit 8-1/4" (209.6 mm) Centerline Radius
2"	33462G	783310334620	Shoe Unit 9-1/2" (241.3 mm) Centerline Radius
2-1/2"	34321	783310343219	Shoe Unit 11-7/16" (290.5 mm) Centerline Radius
3"	34340	783310343400	Shoe Unit 13-3/4" (349.3 mm) Centerline Radius
3-1/2"	34342G	783310343424	Shoe Unit 16" (406.4 mm) Centerline Radius
4"	34344	783310343448	Shoe Unit 18-1/4" (463.6 mm) Centerline Radius
—	33455G	783310334552	880 Conduit Support – 2 Required
—	33454	783310334545	884 Conduit Support – 2 Required
—	34329	783310343295	7/8" Wrench. Use with 1-1/2" and larger shoes

CAT. NO.	UPC NO.	DESCRIPTION
884-PVC	783310336143	An 884 Bender with shoes, supports and wrench for bending 1-1/4", 1-1/2", 2", 3" and 4" 40 mil PVC Coated Rigid conduit. In a steel storage box. (See 884 Conduit Bender for details)



1802

Typical setup with bender (see NOTE)
Shown with 884 Bender and 980 Pump
Bender and conduit not included for 1802.



Bending Table (only) for 777, 880, 884 and 885 Rigid Conduit Benders

- Make bending easier, faster and more accurate
- Insert conduit to be bent in chain vise, tighten. Turn handle to move the chain vise and position conduit for bending
- Use the Bending Degree Protractor and the movable chain vise to advance conduit while making segment and other multi-shot large sweep bends
- Includes 1805 Bending Degree Protractor and metal storage box

SPECIFICATIONS

Capacity	777, 880, 883, 884 and 885 Benders
Weight	180 lb (82 kg)

KEY	CAT. NO.	UPC NO.	DESCRIPTION	1802
A	21541	783310215417	Leg Support Unit	2
B	21545	783310215455	Bender Bracket Unit	1
C	1805	7833101213185	Bending Degree Protractor	1
D	21542	783310215424	Chain Idler Unit	1
E	21543	783310215431	Crank Bracket Unit	1
F	21544	783310215448	Pipe Vise Unit	1
G	21360	783310213604	Pipe Support Pin – 1-1/2" for 884 and 885 Bender	2
H	21413	783310214137	Chain Extension Kit	1
I	21346	783310213468	Legs	4
	1531	783310232742	Steel Storage Box (not shown)	1

CAT. NO.	UPC NO.	DESCRIPTION
1802	783310212577	Bending Table – includes pipe support pins for 884 or 885 Benders
A 21359	783310213598	Pipe support Pin for use with 777, 883 and 883-4 Benders, two (2) are required (Optional)
A 21357	783310213574	Pipe Support Pin for use with 880 Bender, two (2) are required (Optional)

NOTE: To complete setup as shown two 10-foot (3.04 m) lengths of 2" Rigid conduit and Bender are required (purchased separately).

HYDRAULIC PUMPS



4016 GB



4017 GB

Hydraulic Oil

- Greenlee-approved hydraulic oil
- Specially compounded for use with Greenlee hydraulic equipment
- Refinery-filtered to give you the finest oil available

CAT. NO.	UPC NO.	DESCRIPTION	WEIGHT	
			LB	KG
4016GB	783310510598	Hydraulic Oil – 1 Gallon (3.8 l)	8.5	3.9
4017GB	783310508069	Hydraulic Oil – 1 Quart (.9 l)	2.25	1.02

NOTE: For best operation of your Greenlee hydraulic powered equipment, use Greenlee hydraulic oil only. (Do not use hydraulic brake fluid, shock absorber fluid, alcohol, glycerine, castor oil or other non specified fluid—as they reduce performance and can cause damage to pumps and equipment.) Use of improper fluids will void warranty on Greenlee hydraulic equipment.

High-Pressure Hydraulic Hand Pump


- Portable and powerful, for use with Greenlee Benders
- Versatile, operates in any position
- Steel pump body and handle with rubber grip
- Wide base for stability
- Mounting holes for permanent positioning
- Includes 3/8" (9.5 mm) female hydraulic connector and dust cap



755

SPECIFICATIONS

Operation	Manual – Hand
Capacity	10,000 psi (700 bar), .161 in ³ (26 mm ³) per stroke
Length	25-1/2" (648 mm)
Width	7" (178 mm)
Height	6" (152 mm)

CAT. NO.	UPC NO.	DESCRIPTION	WEIGHT	
			LB	KG
755	783310156772	High-Pressure Hydraulic Hand Pump	18	8.2
 18272	783310182726	Seal Kit	–	–

NOTE: See page 102 to select the proper hydraulic hose for this pump.



7475H

Hand-Operated Hydraulic Pump

- Two-speed hydraulic pump. Ideal for use with remote cutting and crimping tools
- Compact and lightweight – easy to move around job sites
- Solid base with wide legs provides for good stability during operation
- Built-in carrying handle
- Large, easy-to-grasp, retraction wheel
- Equipped with 3/8" female screw-type hydraulic coupler

SPECIFICATIONS

Max output pressure	10,000 psi (700 bar)
Useable oil capacity	0.75 quart (0.74 liter)
Capacity	1st stage oil volume (200 psi) 0.82 cu in/stroke 2nd stage oil volume (10,000 psi) 25" (635 mm)
Width	5-5/8" (143 mm)
Height	5-1/2" (140 mm)

CAT. NO.	UPC NO.	DESCRIPTION
7475H	783310074755	Hand-Operated Hydraulic Pump
R 07829	783310078296	Seal Kit

NOTE: See page 102 to select the proper hydraulic hose for this pump.



975

Electric Hydraulic Pump

- Useable oil volume: 3 quarts (2.8 liters)
- For use with Greenlee 2" capacity benders
- Automatic or manual ram-return selector valve provides more control from the pendant switch
- Molded enclosure protects pump, motor and circuitry in tough working environments
- Use with single-hose hydraulic systems with spring-return rams

SPECIFICATIONS

Operation	120 VAC 1/2 HP (.375 kW)
Capacity	10,000 psi (700 bar); 250 inch ³ (4 L) per minute rapid advance; 18 inch ³ (.32 L) per minute at full pressure
Length	12" (305 mm)
Width	10" (254 mm)
Height	15-1/2" (394 mm)

CAT. NO.	UPC NO.	DESCRIPTION	WEIGHT	
			LB	KG
975	783310335160	Electric Hydraulic Pump	51	23
R 34369	783310343691	Seal Kit	-	-

NOTE: See page 102 to select the proper hydraulic hose for this pump.




Electric Hydraulic Pump

- Useable oil volume: 6 quarts (5.7 liters)
- For use with all Greenlee benders
- Handy pendant advance control on 980 and 980-22PS
- Low voltage pendant coupled to solid state motor controls prevents contact arcing for greater reliability and longer life
- Automatic or manual ram return selector valve provides more control from the pendant switch
- Molded enclosure protects pump, motor and circuitry in tough working environments
- Use with single-hose hydraulic systems with spring-return rams

SPECIFICATIONS

Operation	980 – 120 VAC 1-1/2 Hp (1.12 kW) 980-22PS – 220 VAC 50Hz 1-1/2 Hp (1.12 kW)
Capacity	10,000 psi (700 bar); 250 inch, (4 L) per minute rapid advance; 54 inch, (.9 L) per minute at full pressure
Length	12" (305 mm)
Width	12" (305 mm)
Height	17-1/2" (445 mm)

WEIGHT

CAT. NO.	UPC NO.	DESCRIPTION	WEIGHT	
			LB	KG
980	783310335153	Electric Hydraulic Pump with Pendant	71	32
980-22	783310363149	Electric Hydraulic Pump	71	32
980-22PS	783310363132	Electric Hydraulic Pump with Pendant Switch	71	32
 34369	783310343691	Seal Kit	–	–

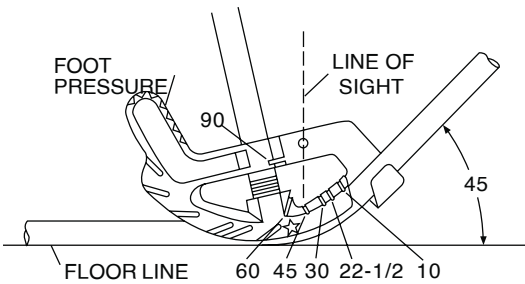
NOTE:980-22 is 220V pump only, no control switch. See page 102 to select the proper hydraulic hose for this pump.



HAND BENDERS



SITE-RITE® Aluminum Heads
840A, 841A, 842A, 843A



840A, 841A, 842A, 843A

EMT	Rigid IMC	Centerline RadII	Aluminum	Iron
1/2"		4-3/16" (106.5 mm)	840A, 840AH	840F, 840FH
3/4"	1/2"	5-1/8" (130.2 mm)	841A, 841AH	841F, 841FH
1"	3/4"	6-1/2" (165.1 mm)	842A, 842AH	842F, 842FH
1-1/4"	1"	9-5/8" (244.5 mm)	843A	843F

SITE-RITE® Hand Benders for 1/2" – 1-1/4" EMT and 1/2" – 1" Rigid/IMC conduit

- Superior, patented Site-Rite® sighting system featuring cast-in, readable markings on the bender heads and a finish that provides for the best visibility in low-light
- Choice of aluminum or iron alloy construction provides options depending on the user's preference for feel and weight
- Strong, stable square hook design
- 1-1/2" bender heads both offer the power pedal feature with a larger foot area on the head for greater control, stability and leverage
- 1/2", 3/4" & 1" bender heads all have enlarged foot pedals and increased toe room to ensure greater control, stability and leverage
- All the bender handles are a consistent diameter, offering a bigger grip area, while still straight up and down for fast 30 degree bends

CAT. NO.	UPC NO.	DESCRIPTION	WEIGHT
840A	783310128106	Aluminum Hand Bender Head for 1/2" EMT	1.4 lb (0.7 kg)
841A	783310128380	Aluminum Hand Bender Head for 3/4" EMT, 1/2" Rigid/IMC	2.1 lb (0.9 kg)
842A	783310128397	Aluminum Hand Bender Head for 1" EMT, 3/4" Rigid/IMC	3.5 lb (1.6 kg)
843A	783310125242	Aluminum Hand Bender Head for 1-1/4" EMT, 1" Rigid/IMC	8.3 lb (3.8 kg)
840AH	783310126768	Aluminum Hand Bender Head with Handle for 1/2" EMT	5.5 lb (2.5 kg)
841AH	783310126775	Aluminum Hand Bender Head with Handle for 3/4" EMT, 1/2" Rigid/IMC	6.4 lb (2.9 kg)
842AH	783310126782	Aluminum Hand Bender Head with Handle for 1" EMT, 3/4" Rigid/IMC	11 lb (5 kg)

CAT. NO.	UPC NO.	DESCRIPTION	WEIGHT
840F	783310128311	Iron Hand Bender Head for 1/2" EMT 1	3.1 lb (1.4 kg)
841F	783310128328	Iron Hand Bender Head for 3/4" EMT, 1/2" Rigid/IMC	4.3 lb (2.0 kg)
842F	783310128335	Iron Hand Bender Head for 1" EMT, 3/4" Rigid/IMC	7.2 lb (3.3 kg)
843F	783310128342	Iron Hand Bender Head for 1-1/4" EMT, 1" Rigid/IMC	16.2 lb (7.3 kg)
840FH	783310128359	Iron Hand Bender Head with Handle for 1/2" EMT	7 lb (3.2 kg)
841FH	783310128366	Iron Hand Bender Head with Handle for 3/4" EMT, 1/2" Rigid/IMC	9 lb (4.1 kg)
842FH	783310128373	Iron Hand Bender Head with Handle for 1" EMT, 3/4" Rigid/IMC	15 lb (6.8 kg)

CAT. NO.	UPC NO.	DESCRIPTION	WEIGHT
84H1	783310126898	Handle for 1/2" & 3/4" Aluminum or Iron Hand Bender Heads	4.5 lb (2.0 kg)
84H2	783310126904	Handle for 1" Aluminum or Iron Hand Bender Heads	7.3 lb (3.3 kg)
84H3	783310126911	Handle for 1-1/4" Aluminum or Iron Hand Bender Heads	11.5 lb (5.2 kg)

Hickeys with Welded Handles for 1/2" - 1" Rigid Conduit

- Heavy-duty cast steel head
- Welded steel handle
- Bend tight radius stub-ups



CAT. NO.	UPC NO.	DESCRIPTION	WEIGHT
508	783310181026	Hickey for 1/2" Rigid	6.9 lb (3.1 kg)
512	783310181033	Hickey for 3/4" Rigid	8 lb (3.6 kg)
516	783310181040	Hickey for 1" Rigid	13 lb (5.9 kg)



Little Kicker® Offset Bender

- Bends offsets in one easy operation. Insert conduit, depress handle, release and remove conduit
- Makes identical offsets everytime for wall mounted boxes with exposed conduit
- Creates offset that matches the knockout in box
- Maximum offset of .56" (9/16")

SPECIFICATIONS

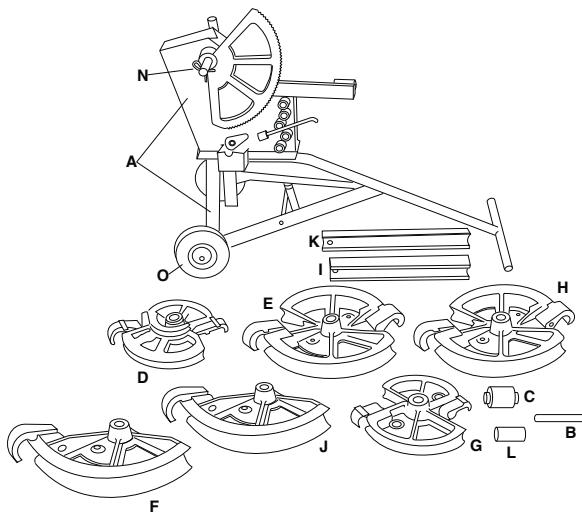
Capacity	1810: 1/2" EMT 1811: 3/4" EMT
Weight	1810: 8.75 lb (4 kg) 1811: 8.50 lb (3.9 kg)

CAT. NO.	UPC NO.	DESCRIPTION
1810	783310138150	Offset Bender for 1/2" EMT
1811	783310141594	Offset Bender for 3/4" EMT

MECHANICAL BENDERS



1818



Mechanical Benders for EMT, IMC, Rigid and Aluminum Conduit



- Bends a wide variety of types and sizes of conduit
- Durable ratchet mechanism for easy bending
- Bypass the ratchet for fast, direct bending on smaller sizes
- Bending degree indicator and charts for fast, easy, accurate bending
- All shoe and bending accessories can be mounted to the frame unit and secured with a chain and lock
- Heavy-duty undercarriage with wheels

SPECIFICATIONS

Capacity	EMT: 3/4" – 2" Rigid: 1/2" – 1-1/2" IMC: 1/2" – 1-1/4"	Aluminum Rigid: 1/2" – 1-1/2" Stainless Steel Rigid: 1/2" – 1-1/2" Stainless Steel EMT: 3/4"– 1"
Weight	1818: 250 lb (114 kg) 1818T: 217 lb (99 kg) 1818R: 185 lb (84 kg)	

CENTERLINE BENDING RADII

Shoe Size	Inches	mm
1/2" Rigid/IMC	2-21/32"	67.5
3/4" Rigid/IMC	4-5/8"	117.5
3/4" EMT	5-3/32"	129.4
1" Rigid/IMC	5-7/8"	149.2
1" EMT	6-13/32"	162.7
1-1/4" Rigid/IMC	7-3/8"	187.3
1-1/4" EMT	8-9/32"	210.3
1-1/2" Rigid	9"	228.6
1-1/2" EMT	8-9/32"	210.3
2" EMT	9-3/16"	233.4
2" Aluminum	10-15/32"	265.9

CAT. NO.	UPC NO.	DESCRIPTION
1818	783310221920	Mechanical Bender for 3/4" through 2" EMT conduit, 1/2" through 1-1/4" IMC conduit and 1/2" through 1-1/2" Rigid steel, aluminum and stainless steel conduit
1818R	783310202318	Mechanical Bender for 1/2" through 1-1/4" IMC conduit and 1/2" through 1-1/2" Rigid steel, aluminum and stainless steel conduit
1818T	783310202325	Mechanical Bender for 3/4" through 2" EMT conduit and 3/4" & 1" stainless steel EMT
08429	783310084297	Under Carriage Assembly
 1818G1	783310222200	Basic Bender and Carriage Assembly (No Shoes)
 19988	783310199885	Wheel, Non-flat

*Use a 5' (1.5 m) length of 1" Rigid conduit for the handle.

KEY	CAT NO.	UPC NO.	DESCRIPTION	BENDERS				SHOE GROUPS*				
				1818	1818R	1818T	1818G1	36905	36906	36907		
A	1818G1	783310222200	Basic Bender and Carriage Assembly (No Shoes)	1	1	1	1	-	-	-		
B	36697G	783310366973	Roller Pin Unit	1	1	1	-	1	1	1		
C	18681G	783310186816	Cushioned Roller Unit	1	1	1	-	1	1	1		
D	18827	783310188278	1/2, 3/4 & 1" Rigid/IMC Shoe Unit	1	1	-	-	1	1	-		
E	18828	783310188285	1-1/4" Rigid/IMC; 1-1/2" Rigid Shoe Unit	1	1	-	-	1	1	-		
G	18830	783310188308	3/4 & 1" EMT Shoe Unit	1	-	1	-	1	-	1		
H	18831	783310188315	1-1/4 & 1-1/2" EMT Shoe Unit	1	-	1	-	1	-	1		
I	18642	783310186427	1-1/4 & 1-1/2" EMT Follow Bar	1	-	1	-	1	-	1		
J	18832	783310188322	2" EMT Shoe Unit	1	-	1	-	1	-	1		
K	18636	783310186366	2" EMT Follow Bar	1	-	1	-	1	-	1		
L	36296	783310362968	Roller Follow Bar Guide	1	-	1	-	1	-	1		
N	18772	783310187721	Retainer Clip	1	1	1	-	1	1	1		
O	02448	783310024484	Wheel, Non-flat	2	2	2	-	-	-	-		
	1723	783310238188	Steel Storage Box For Shoe Units (not shown)	Optional								



Mechanical Benders for IMC and Rigid Conduit

- Ratchet action for increased leverage
- Bypass the ratchet for fast, direct bending on smaller sizes
- Heavy-duty welded construction for long, reliable service
- Built-in bending degree indicator and easy to use bending charts for accurate, consistent bends

SPECIFICATIONS

Capacity	Mechanical Benders for IMC and Rigid Conduit 1800, 1800G1: 1/2", 3/4" and 1" IMC and Rigid 1801: 1-1/4" and 1-1/2" IMC and Rigid
Weight	1800: 81 lb (36.7 kg) 1800G1: 48 lb (21.8 kg) 1801: 104 lb (47.2 kg)

CENTERLINE BENDING RADII

1800, 1800G1	1/2" Rigid conduit 2-5/8" (66.7 mm) 3/4" Rigid conduit 4-5/8" (117.5 mm) 1" Rigid conduit 5-7/8" (149.2 mm)
1801	1-1/4" Rigid conduit 8-1/16" (204.8 mm) 1-1/2" Rigid conduit 9-11/16" (246.1 mm)

CAT. NO.	UPC NO.	DESCRIPTION
1800	783310244004	Mechanical Bender for 1/2", 3/4", 1" IMC and Rigid conduit
1800G1	783310244011	Mechanical Bender without undercarriage, for bench or truck bed mounting. Bends 1/2", 3/4", 1" IMC and Rigid conduit
1801	783310247531	Mechanical Bender for 1-1/4", 1-1/2" IMC and Rigid conduit
R 08429	783310084297	Undercarriage Unit for 1800 and 1801
R 02448	783310024484	Wheel, Non-flat

*Use a 5' (1.5 m) length of 1" Rigid conduit for the handle.

PVC HEATERS & BLANKETS

PVC BENDING EQUIPMENT SELECTION GUIDE

CAT. NO. – DESCRIPTION	PAGE NO.	1/2"	3/4"	1"	1-1/4"	1-1/2"	2"	2-1/2"	3"	3-1/2"	4"	5"	6"
BLANKETS													
860-1-1/2 PVC Heating Blanket	182	X	X	X	X	X	–	–	–	–	–	–	–
860-3 PVC Heating Blanket	182	–	–	–	–	–	X	X	X	–	–	–	–
860-4 PVC Heating Blanket	182	–	–	–	–	–	–	–	–	X	X	–	–
HEATERS													
849 PVC Heater	180	X	X	X	X	X	X	–	–	–	–	–	–
851 PVC Heater	181	X	X	X	X	X	X	X	X	X	X	–	–
847 / 848 PVC Heater	181	X	X	X	X	X	X	X	X	X	X	X	X




849

Electric PVC Heater for 1/2" – 2", All Schedules

- Easy to use: preheat for 10 minutes, insert PVC, rotate until pliable, remove and form bend
- Sturdy double wall metal with fiberglass insulation and reflective interior for fast, even heat
- Full length door for easy PVC loading and removal
- Other features include on/off switch, pilot light and carrying handle
- Heats 24" Long section of pipe

SPECIFICATIONS

Capacity	1/2" – 2" PVC All Schedules
Power Source	120 VAC 20 Amp or 3000 Watt Generator
Weight	15 lb (6.8 kg)

CAT. NO.	UPC NO.	DESCRIPTION
849	783310273950	Electric PVC Heater for 1/2" – 2"
 27811	783310278115	Calrod Heating Element



851

Electric PVC Heater for 1/2" – 4", All Schedules

- Easy to use: preheat for 10 minutes, open lid and position PVC, close lid, rotate until pliable, open lid, remove PVC and form bend
- Heavy-duty, insulated metal walls and cover with reflective interior for efficient, even heat
- Full-length door for easy loading and unloading
- On/off switch with indicator light
- Sturdy wheels for easy mobility
- Use two units in tandem to heat large sweep bends
- Heats 50" Long section of pipe

SPECIFICATIONS

Capacity	1/2" – 4" PVC All Schedules
Power Source	120 VAC 20 Amp or 3600 Watt Generator
Length	52" (1321 mm)
Weight	53 lb (24 kg)
Wattage	2300

CAT. NO.	UPC NO.	DESCRIPTION
851	783310355779	Electric PVC Heater for 1/2" - 4"
R 35592	783310355922	Calrod Heating Element

See page 183 for 2" - 4" PVC plugs or 859-4 Plug Set.



847

Electric PVC Heater for 1/2" – 6", All Schedules

- Easy to use: preheat for 10 minutes, open lid and position PVC, close lid, rotate until pliable, open lid, remove PVC and form bend. 848 model has motorized rotation
- Heavy-duty metal construction with reflective interior for fast, efficient heating
- Has heating chart, timer, and on/off switch with indicator light for added convenience
- Double doors with piano hinges allows for heating of shorter lengths with one door open
- Sturdy wheels for easy mobility
- Heats 65" Long section of pipe

SPECIFICATIONS

Capacity	1/2" – 6" PVC All Schedules
Power Source	230 VAC 30 AMP or 7000 Watt Generator
Length	71" (1803 mm)
Weight	847: 78 lb (36 kg) 848: 80 lb (37 kg)
Wattage	6600

CAT. NO.	UPC NO.	DESCRIPTION
847	783310308669	Electric PVC Heater for 1/2" – 6" All Schedules
848	783310308676	Electric PVC Heater with Motorized PVC Rotation for 1/2" – 6" All Schedules
A 31092	783310310921	Motorized PVC rotation kit for 847
A 857	783310310938	PVC Roller Support (Optional)
R 30908	783310309086	Calrod Heating Element



860-3

PVC Heating Blankets for up to 4", All Schedules

- Make bends, offsets or saddles in PVC fast and easy
- Easy to use: wrap blanket around PVC, secure with hook and loop strap
- Built-in stiffeners help keep the blanket tight to the PVC surface – remove blanket and form bend by hand
- Controlled, even heating for uniform bending
- Heavy-duty cord and thermostat for long life
- Temperature over 300° F (149° C)

SPECIFICATIONS

	860-1-1/2	860-3	860-4
Capacity	Up to 1-1/2" PVC All Schedules	2" – 3" PVC All Schedules	3-1/2" – 4" PVC All Schedules
Power Source	120 VAC	120 VAC	120 VAC
Size	13" x 8-1/4" (330.2 x 209.6 mm)	30" x 13-1/4" (762.0 x 336.6 mm)	38" x 16-1/4" (965.2 x 412.8 mm)
Weight	1.7 lb (.8 kg)	3.3 lb (1.5 kg)	4.9 lb (2.2 kg)
Wattage	200	800	1300

CAT. NO.	UPC NO.	DESCRIPTION
860-1-1/2	783310314868	PVC Heating Blanket for up to 1-1/2"
860-3	783310314875	PVC Heating Blanket for 2"-3"
860-4	783310314882	PVC Heating Blanket for 3-1/2" and 4"

PVC HEATERS & BLANKETS PVC ACCESSORIES



859-4

PVC Plugs and Plug Set

- Use with PVC Heating Blankets or Electric Heaters to plug the ends of the PVC being heated. The trapped air will help keep the PVC from collapsing while forming the bend
- Use on Schedule 40 and 80 PVC
- Available in 2" – 4" set or individual sizes 2" – 6". Order two, one for each end of the PVC

SPECIFICATIONS

Capacity	2" – 6" PVC Schedules 40 and 80
Weight	859-4: 8 lb (3.6 kg) 30976: .3 lb (0.2 kg) 30977: .4 lb (0.2 kg) 30978: .4 lb (0.2 kg) 30979: .6 lb (3.6 kg) 30980: 1 lb (0.5 kg) 30981: 1.3 lb (0.6 kg)

CAT. NO.	UPC NO.	DESCRIPTION
859-4	783310357407	PVC Plug Set for 2" – 4". Includes 2 each of 2", 2-1/2", 3" and 4" plugs and carrying case. Case has a place for optional 5" and 6" sizes.
R 30976	783310309765	2" PVC Plug
R 30977	783310309772	2-1/2" PVC Plug
R 30978G	783310309789	3" and 3-1/2" PVC Plug
R 30979	783310309796	4" PVC Plug
R 30980	783310309802	5" PVC Plug
R 30981	783310309819	6" PVC Plug
R 31228G	783310312284	Plastic Carrying Case

ACCESSORIES



1895

Protractor with Magnetic Base

SPECIFICATIONS

Width	0.4 lb (0.2 kg)
-------	-----------------

CAT. NO.	UPC NO.	DESCRIPTION
1895	783310359050	Angle Protractor with Magnetic Base



Chain-Type Pipe Vise

- Use with a wide range of sizes of pipe or conduit
- Built-in pipe rest
- To prevent marring of plastic or plastic coated pipe, vise jaws can be rotated with smooth side up – Use serrated side for harder materials
- Chain design holds pipe securely to prevent it from twisting or turning during threading

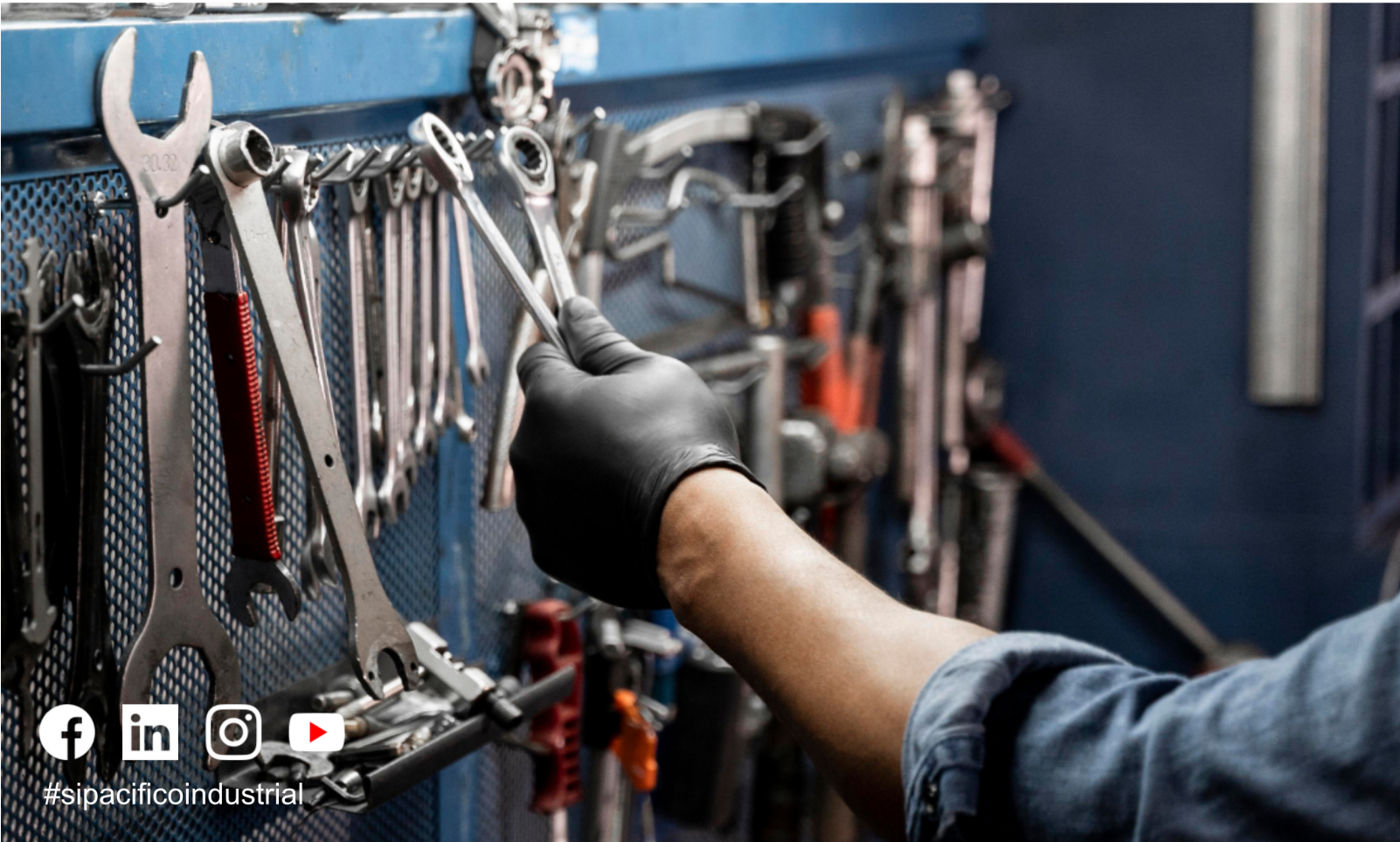
SPECIFICATIONS

Capacity	1/8" – 5" (3.2 mm x 127 mm) pipe
Weight	17 lb (7.7 kg)

CAT. NO.	UPC NO.	DESCRIPTION
467	7833101273189	Chain-Type Pipe Vise

Conduit Size Chart

Size	EMT ELECTRICALMETALLIC TUBING						IMC INTERMEDIATE CONDUIT						RIGID CONDUIT STEEL OR ALUMINUM					
	OUTSIDE DIA.		INSIDE DIA.		WALL THICKNESS		OUTSIDE DIA.		INSIDE DIA.		WALL THICKNESS		OUTSIDE DIA.		INSIDE DIA.		WALL THICKNESS	
	Inches	mm	Inches	mm	Inches	mm	Inches	mm	Inches	mm	Inches	mm	Inches	mm	Inches	mm	Inches	mm
1/2"	.706	17.9	.622	15.8	.042	1.1	.815	20.7	.675	17.1	.070	1.8	.840	21.3	.622	15.8	.109	2.8
3/4"	.922	23.4	.824	20.9	.049	1.3	1.029	26.1	.879	22.3	.075	1.9	1.050	26.7	.824	20.9	.113	2.9
1"	1.163	29.5	1.049	26.6	.057	1.5	1.290	32.8	1.120	28.4	.085	2.2	1.315	33.4	1.049	26.6	.133	3.4
1-1/4"	1.510	38.4	1.380	35.1	.065	1.7	1.638	41.6	1.468	37.3	.085	2.2	1.660	42.2	1.380	35.0	.140	3.6
1-1/2"	1.740	44.2	1.610	40.9	.065	1.7	1.883	47.8	1.703	43.3	.090	2.3	1.900	48.3	1.610	40.9	.145	3.7
2"	2.197	55.8	2.067	52.5	.065	1.7	2.360	59.9	2.170	55.1	.095	2.4	2.375	60.3	2.067	52.5	.154	3.9
2-1/2"	2.875	73.0	2.731	69.4	.072	1.8	2.857	72.6	2.597	66.0	.130	3.3	2.875	73.0	2.469	62.7	.203	5.2
3"	3.500	88.9	3.356	85.2	.072	1.9	3.476	88.3	3.216	81.7	.130	3.3	3.500	88.9	3.068	77.9	.216	5.5
3-1/2"	4.000	101.6	3.834	97.4	.083	2.1	3.971	100.9	3.711	94.3	.130	3.3	4.000	101.6	3.548	90.1	.226	5.7
4"	4.500	114.3	4.334	110.1	.083	2.1	4.466	113.4	4.206	106.8	.130	3.3	4.500	114.3	4.026	102.3	.237	6.0
5"	—	—	—	—	—	—	—	—	—	—	—	—	5.563	141.3	5.047	128.2	.258	6.5
6"	—	—	—	—	—	—	—	—	—	—	—	—	6.625	168.3	6.065	154.0	.280	7.1



Servicios Industriales DEL PACÍFICO

ALIADO ESTRATEGICO DE LA INDUSTRIA

Teléfono +52 (664) 975 · 6337

Correo contacto@sipacifico.com.mx

Dirección
Ciruelo s/n, Col. Granja Santa Cecilia C.P. 21386
Mexicali Baja California